

# Burmatex®

MANUFACTURERS OF CREATIVE FLOORING 



**osaka**

---

**carbon neutral** carpet tiles





Made from Universal Fibers® Thrive® matter yarn, the **world's first carbon negative recycled** yarn, and our unique **eco2matters® BioBase™ recycled** backing, **osaka®** is **carbon neutral**.

---

**osaka®** is an all over pattern inspired by an incredibly vibrant, futuristic, and traditional part of the world, Japan. The contrasts found in Japan inspire the range; new and old, warm and cool, urban and natural.

---

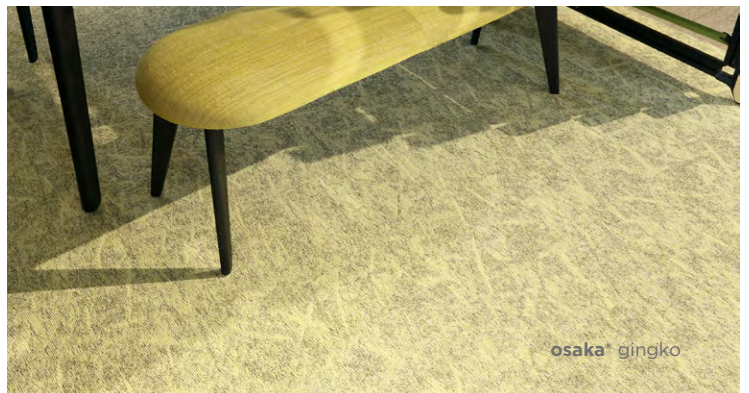
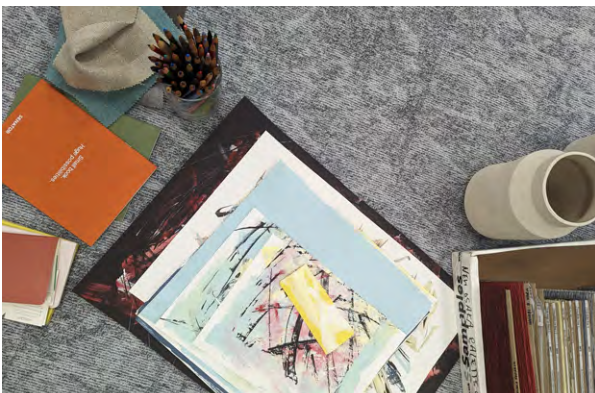
The refreshed palette of 12 includes trend inspired luminous pastels (gingko, chiru, kawa) a bright and joyful red (hanabi), two fresh and calming blues (kori and sora) and a new pure warm (hikari). The range maintains its set of popular core greys and beige; mochi, arashi, sesame and sumi.







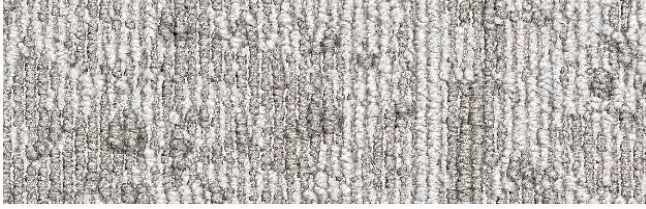
osaka® hanabi & sora



osaka® ginkgo

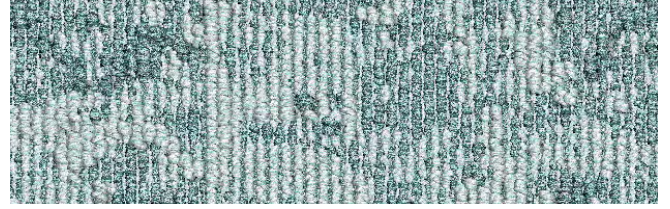


# osaka colour palette



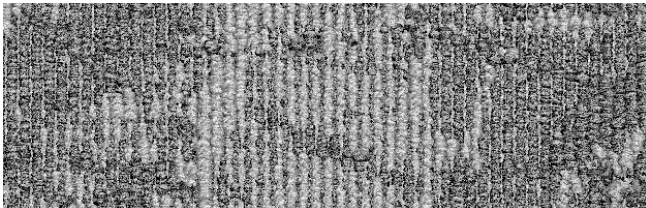
22809 mochi

LRV: Y 24.28



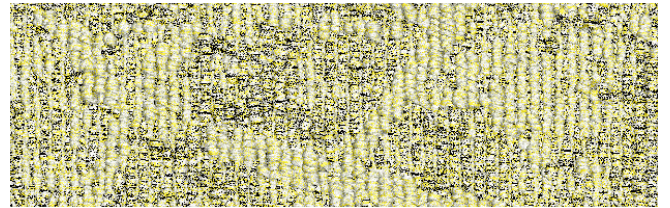
22815 kawa

LRV: Y 27.31



22805 arashi

LRV: Y 11.80



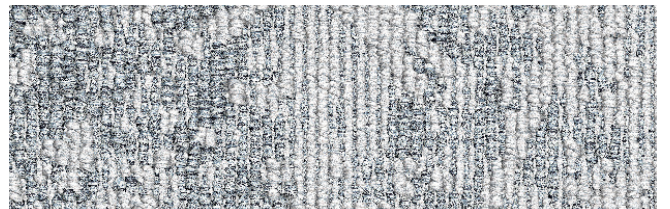
22817 gingko

LRV: Y 33.46



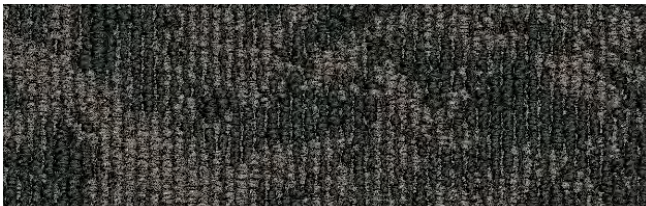
22814 kumo

LRV: Y 7.76



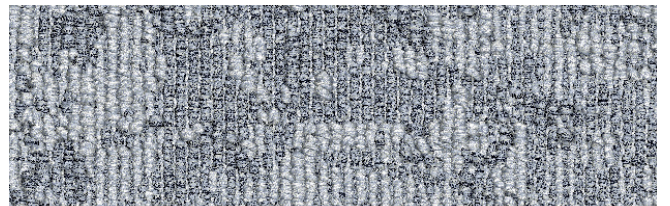
22818 chiru

LRV: Y 26.56



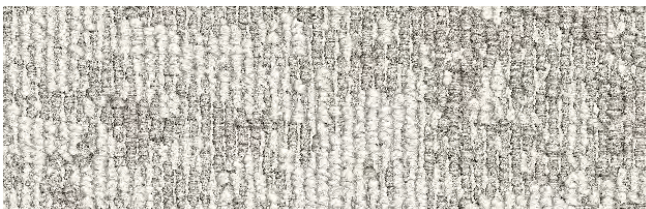
22803 sumi

LRV: Y 4.16



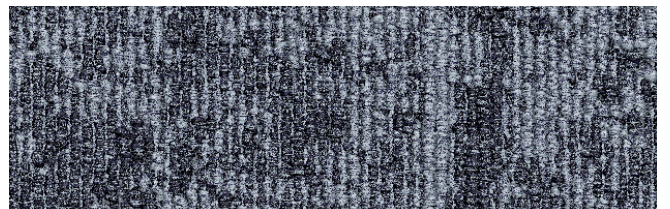
22819 kori

LRV: Y 18.33



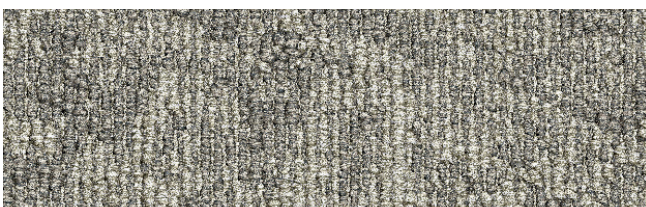
22813 hikari

LRV: Y 29.90



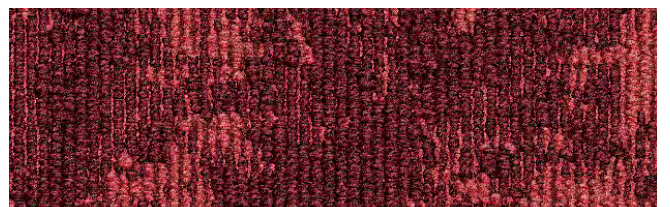
22816 sora

LRV: Y 8.82



22802 sesame

LRV: Y 13.65



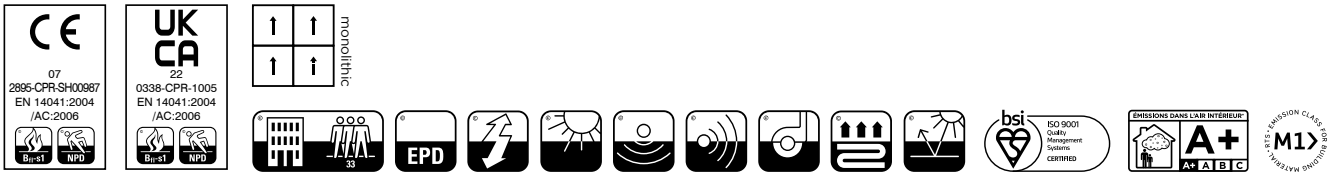
22820 hanabi

LRV: Y 5.99



# technical specifications

Yarn	Universal Fibers® Thrive® matter <b>carbon negative recycled</b> yarn
Dimensions	50cm x 50cm
Pile Weight	695g/m <sup>2</sup>
Total Weight	4100g/m <sup>2</sup>
Total Thickness	7.5mm
Construction	Tufted 1/12th gauge loop
Pile Density	226,771/m <sup>2</sup>
Backing	<b>BioBase™</b> backing (recycled BS EN ISO 14021)
Wear Classification	Class 33 heavy commercial use (BS EN 1307)
Castor Chair Rating	pass - continuous use (BS EN 985)
Luxury Rating Class	LC2
Flammability	Euroclass Bfl-s1
Static loading	BS 4939: 1987 (2003) Recovery >80% (24hrs)
Reduction in Impact Noise	BS EN ISO 10140-3:2010 28dB
VOC	Class A+
Warranty	15 years
Number Of Tiles Per Box	20 (5m <sup>2</sup> )



## eco<sup>2</sup>matters®

We are committed to helping deliver a sustainable future, because we believe that what we do **matters**. To help us deliver on this commitment, we have developed **eco<sup>2</sup>matters®**, our sustainability principles, supported by independent 3rd party verification.



Made from Universal Fibers® Thrive® matter yarn, the **world's first carbon negative recycled** yarn, and our unique **BioBase™ recycled** backing, **osaka®** is **carbon neutral**. The design and 12 colour palette is an all over pattern inspired by an incredibly vibrant, futuristic, and traditional part of the world, Japan.

	<b>osaka®</b> is <b>carbon neutral</b>		<b>Burmatex® reco<sup>2</sup>very</b> take back service provides a no landfill solution for your used tiles
	<b>osaka®</b> uses <b>carbon negative recycled</b> yarn		<b>Burmatex®</b> products are made using 100% certified <b>renewable</b> electricity
	<b>osaka®</b> uses <b>BioBase™ recycled</b> backing		<b>eco<sup>2</sup>matters®</b> declarations are independently 3rd party verified

<b>EPD</b> Burmatex® products are supported by 3rd party independently verified, product specific EPD's	<b>LEED</b> Burmatex® products contribute towards Leed accreditation	<b>SKA</b> Burmatex® products adhere to SKA standards	<b>WELL Building Standards</b> Burmatex® products contribute to WELL Building Standards
--	---	--	--



### need a BIM object?

all our products have BIM objects available on our website

For more information about  
**osaka carbon neutral** carpet tiles  
Visit [www.burmatex.co.uk/osaka](http://www.burmatex.co.uk/osaka)

Need **advice**? Help with the **design**?  
Call your Business Area Manager

**Need an osaka shadecard or samples?**



Scan the QR code  
Call +44 (0) 1924 262525  
Email [samples@burmatex.co.uk](mailto:samples@burmatex.co.uk)

# Burmatex®

MANUFACTURERS OF CREATIVE FLOORING 

---

KEEP IN TOUCH



---

Burmatex Ltd  
Victoria Mills, The Green,  
Ossett, West Yorkshire  
WF5 0AN