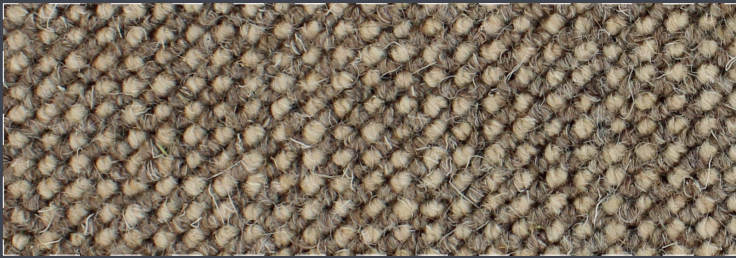
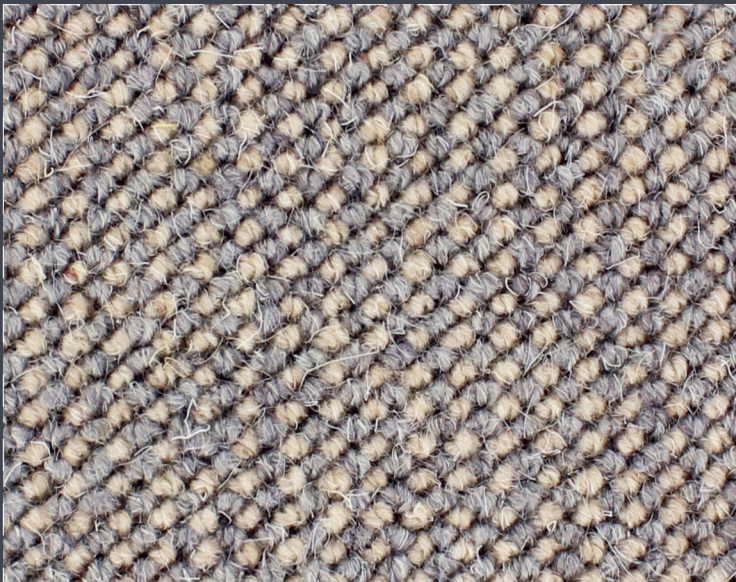


1631-515



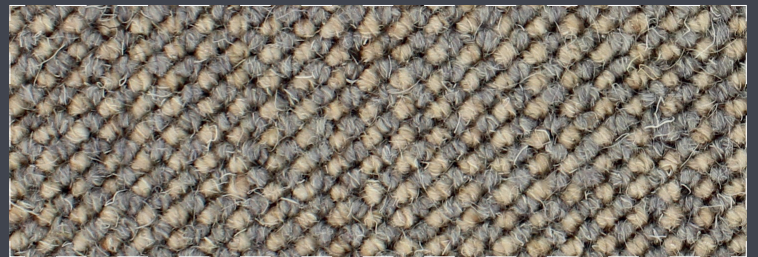
1631-545



1631-605



Scan QR-code to request 1631 A5-samples



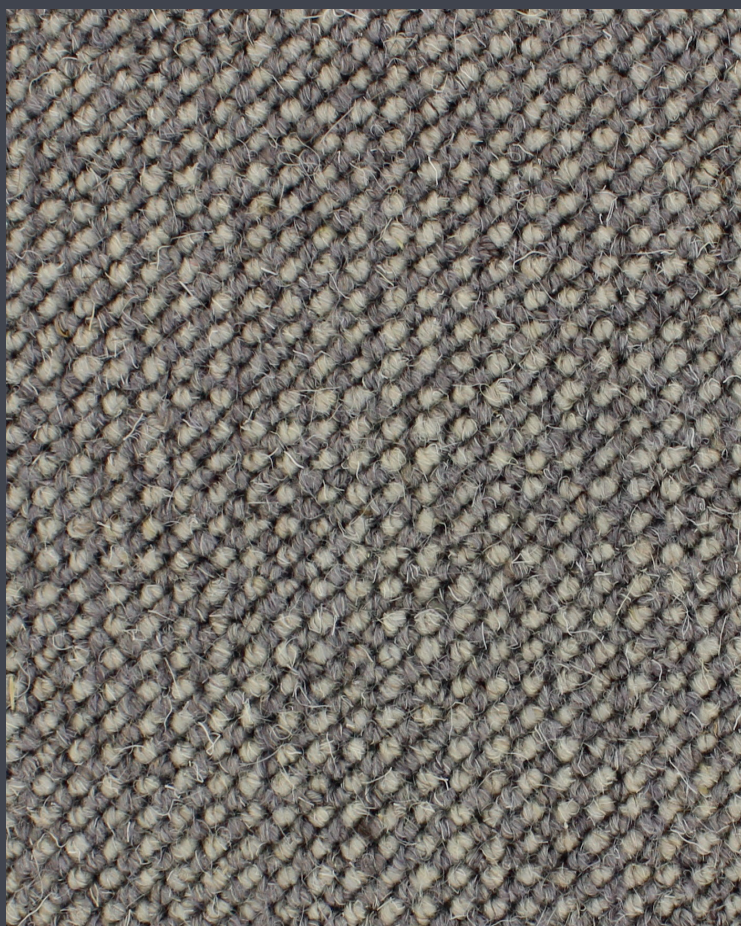
1631-615



1631-635



1631-645



The 1631 is a two-tone running pile in 100% three threads of wool. The great colour combination of warm and cool shades make this a unique and attractive carpet.



TECHNISCHE SPECIFICATIES

Fabricagemethode	Getuft
Poolmateriaal	100% wol
Rug	Action Back
Breedte	400 & 500 cm
Dikte totaal	7,8 mm
Poolgewicht	1200 g/m ²
Massa totaal	2300 g/m ²
Kleuren	6

TECHNICAL SPECIFICATIONS

Type of manufacture	Tufted
Pile material	100% wool
Back	Action Back
Width	400 & 500 cm
Total thickness	7,8 mm
Pile weight	1200 g/m ²
Total weight	2300 g/m ²
Number of colours	6

TECHNISCHE DATEN

Herstellungsverfahren	Getufted
Material Pol	100% wolle
Rücken	Action Back
Breite	400 & 500 cm
Gesamtdicke	7,8 mm
Pohlgewicht	1200 g/m ²
Gesamtes Gewicht	2300 g/m ²
Anzahl Farben	6

SYMBOLS

