

technical specifications

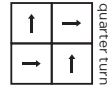
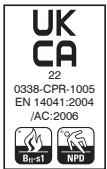
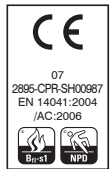
Fibre Composition
Dimensions
Pile Weight
Total Weight
Total Thickness
Backing
Wear Classification
Flammability
Thermal Resistance
Castor Chair Rating
Static Loading
Dynamic Loading
Body Voltage Test
Colour Fastness To Light
Colour Fastness To Shampoo
Sound Absorption Coefficient
Reduction in Impact Noise
Reduction in Impact Noise at 1000Hz
VOC
Warranty
Number of Tiles per Box

tiles

80% Polypropylene 15% Nylon 5% Recycled Polyester
50cm x 50cm
950g/m²
4200g/m²
7.8mm
BioBase® recycled backing (recycled BS EN ISO 14021)
Heavy Contract
Euroclass Bfl-s1
Tog Rating 0.84
Pass - continuous use (BS EN 985)
BS 4939:1987 (2003) Recovery >80% (24hrs)
BS ISO 2094:1999 (2005) Loss <20% (1000 impacts)
BS ISO 6356:2000 <2kV
BS EN ISO 105 - B02 Minimum grade 6
BS 1006:UK-TB: 1990 Minimum Grade 4
BS EN 354:2003
BS EN ISO 10140-3:2010 18dB
BS EN ISO 140-8: Part 8: 1998 16.1dB
A+
15 years
20 (5m²)

sheet

80% Polypropylene 15% Nylon 5% Recycled Polyester
30m x 2m
950g/m²
6mm
Heavy Contract
Euroclass Bfl-s1
Tog Rating 0.89; ISO 8302: 0.09 m2K/W
Pass - continuous use (BS EN 985)
BS 4939:1987 (2003) Recovery >80% (24hrs)
BS ISO 2094:1999 (2005) Loss <20% (1000 impacts)
BS ISO 6356:2000 <2kV
BS EN ISO 105 - B02 Minimum grade 6
BS 1006:UK-TB: 1990 Minimum Grade 4-5
BS EN 354:2003
BS EN ISO 140-8: Part 8: 1998 18dB
BS EN ISO 140-8: Part 8: 1998 20.5dB
A+
15 year



eco₂matters®

We are committed to helping deliver a sustainable future, because we believe that what we do **matters**. To help us deliver on this commitment, we have developed **eco₂matters**® sustainability goals, supported by the independently 3rd party verified **eco₂matters**® ecosystem.



Journey to Net Zero & Beyond



Positive Environmental Impact



Social Values & Well Being

Made from solution dyed fibres including 5% recycled polyester and our unique **BioBase®** recycled backing, **supercordiale®** is **low carbon**. The extremely durable fine ribbed carpet, available in tile or sheet making it easy to maintain, and features **anti-fray** and **anti-ravel** technology. The palette of 40 colours is an ideal choice for use in schools, colleges and universities, perfect for heavy footfall environments.



low carbon

supercordiale® is **low carbon**



take back service

Burmatex® reco₂very take back service provides a no landfill solution for your used tiles



anti-fray anti-ravel

supercordiale® features **anti-fray/anti-ravel** technology



100% certified renewable

Burmatex® products are made using 100% certified **renewable** electricity



BioBase® backing

supercordiale® tiles use **BioBase® recycled** backing



independently 3rd party verified

eco₂matters® declarations are independently 3rd party verified

EPD

Burmatex® products are supported by 3rd party independently verified, product specific EPD's

LEED

Burmatex® products contribute towards Leed accreditation

SKA

Burmatex® products adhere to SKA standards

WELL Building Standards

Burmatex® products contribute to WELL Building Standards

Contact Us
T +44 (0) 1924 262 525
email: sales@burmatex.co.uk

Burmatex Ltd
Victoria Mills, The Green
Ossett, West Yorkshire
WF5 0AN, United Kingdom

LRV values

Product code tiles	Product code sheet	Product colour name	CIE Y
12105	12005	diamond	11.70
12160	12060	silver	8.32
12103	12003	clouds	6.07
12102	12002	charcoal	3.19
12101	12001	ebony	2.35
12104	12004	storm	9.05
12119	12019	horizon	8.23
12117	12017	denim	5.83
12161	12061	ocean	4.10
12107	12007	ink	2.73
12181	12081	sky	6.67
12162	12062	sapphire	3.44
12114	12014	atlantis	3.79
12163	12063	ultramarine	3.85
12164	12064	midnight	2.27
12191	12091	stones	14.76
12134	12034	honey	13.24
12178	12078	sand	7.48
12165	12065	earth	4.51
12166	12066	electric	5.36
12167	12067	saffron	21.24
12168	12068	tangerine	14.14
12169	12069	crimson	5.88
12185	12085	paprika	4.52
12170	12070	cherry	2.93
12171	12071	sagebrush	8.16
12172	12072	fern	7.37
12130	12030	lime	8.83
12183	12083	emerald	4.97
12125	12025	sea	6.59
12182	12082	aqua	9.40
12173	12073	peacock	6.72
12122	12022	turquoise	5.02
12113	12013	lavender	5.32
12174	12074	lilac	7.84
12184	12084	violet	2.71
12175	12075	mauve	9.62
12176	12076	rose	5.73
12177	12077	orchid	3.72
12180	12080	indigo	3.20