

LOUNGE

Lounge

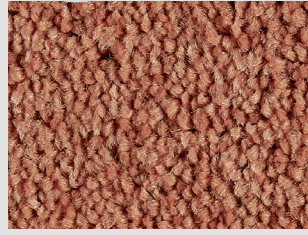
FOREVER CLEAN™



▲ SB: LZE0.0781 | 400 & 500 cm



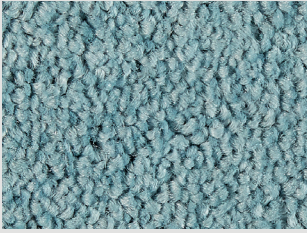
▲ SB: LZE0.0371 | 400 & 500 cm



▲ SB: LZE0.0332 | 400 & 500 cm



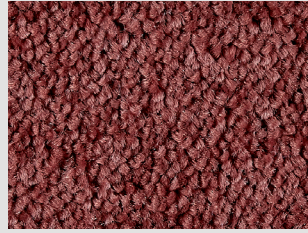
▲ SB: LZE0.0251 | 400 & 500 cm



▲ SB: LZE0.0761 | 400 & 500 cm



▲ SB: LZE0.0611 | 400 & 500 cm



▲ SB: LZE0.0312 | 400 & 500 cm



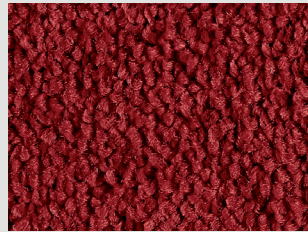
▲ SB: LZE0.0221 | 400 & 500 cm



▲ SB: LZE0.0712 | 400 & 500 cm



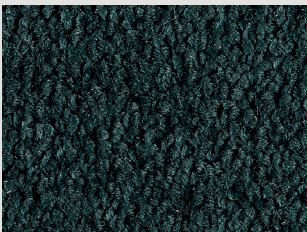
▲ SB: LZE0.0081 | 400 & 500 cm



▲ SB: LZE0.0120 | 400 & 500 cm



▲ SB: LZE0.0430 | 400 & 500 cm



▲ SB: LZE0.0692 | 400 & 500 cm



▲ SB: LZE0.0470 | 400 & 500 cm



▲ SB: LZE0.0190 | 400 & 500 cm



▲ SB: LZE0.0460 | 400 & 500 cm



▲ SB: LZE0.0820 | 400 & 500 cm



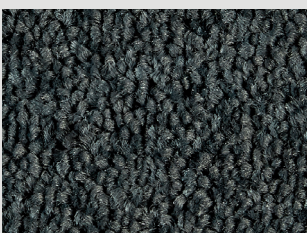
▲ SB: LZE0.0850 | 400 & 500 cm



▲ SB: LZE0.0880 | 400 & 500 cm



▲ SB: LZE0.0451 | 400 & 500 cm



▲ SB: LZE0.0830 | 400 & 500 cm



▲ SB: LZE0.0841 | 400 & 500 cm



▲ SB: LZE0.0871 | 400 & 500 cm



▲ SB: LZE0.0890 | 400 & 500 cm

LOUNGE

Lounge

FOREVER CLEAN™

Secondary Backing Rugtype • Envers Rücken • Sottofondo • Reverso	SB
Manufacturing process Fabricagemethode • Technique de fabrication Herstellungsart • Tecnica di fabbricazione • Técnica de fabricación	tufted, 1/10" twist
Pile composition Pool Samenstelling • Nature du velours Polmaterial • Composizione felpa • Composición de pelo	100% TRIEXTA SMARTSTRAND
Primary backing Tuftdoek • Premier dossier Trägermaterial • Tela di supporto • Tela de soporte	woven
Width Breedte • Largeur Breite • Altezza • Ancho	± 400 & 500 cm
Effective pile height Nuttige poolhoogte • Hauteur de velours utile Tatsächliche Florhöhe • Spessore felpa utile • Altura de pelo	± 7,5 mm
Total height Totale dikte • Hauteur totale Gesamthöhe • Spessore totale • Altura total	± 10 mm
Number of knots/sqm Aantal noppen/m ² • Nombre de points/m ² Noppenzahl/m ² • Numero di punti/mq • Puntos de pelo/m ²	± 173.360
Pile weight/sqm Poolinzetgewicht/m ² • Poids mis en oeuvre/m ² Poleinsatzgewicht/m ² • Peso felpa/mq • Peso de pelo/m ²	± 1.490 gr
Total weight/sqm Totaal gewicht/m ² • Poids total/m ² Gesamtwicht/m ² • Peso totale/m ² • Peso total/m ²	± 2.480 gr
EN 13501-1 Fire behaviour Brandgedrag • Comportement au feu Brennverhalten • Reazione al fuoco • Resistencia al fuego	C_{fl}-s1
EN 1307-2004 Classification Classificatie • Classification Klassifizierung • Classificazione • Clasificación al uso	Class 23 + 32 Domestic Heavy Commercial General

ISO 140/8 1997 Impact sound insulation Contactgeluidsisolatie • Isolation aux bruits d'impact Trittschallverbesserungsmaß • Miglioramento acustico	± 29 dB
ISO 354 Sound absorption α_s Geluidsdempingsvermogen α _s • Absorption phonique α _s Schallabsorptionsgrad α _s • Grado d'assorbimento acustico α _s	± 0,3 (1000 Hz)
ISO 11654 Sound absorption α_w Geluidsdempingsvermogen α _w • Absorption phonique α _w Schallabsorptionsgrad α _w • Grado d'assorbimento acustico α _w	± 0,25
DIN 52612 Thermal retention Warmteoorlaatweerstand • Résistivité thermique Wärmedurchlaßwiderstand • Resistenza termica	± 0,147 m²/kW
TOG rating	± 1,47
ISO 105 B02 2000 Lightfastness Lichtechtheid • Solidité à la lumière Lichtechtheit • Solidità colori alla luce • Solidez del color a la luz	≥ 5 - 6
ISO 105 E01 2002 Waterfastness change in colour Waterechtheid verkleuring • Solidité à l'eau changement couleur Wasserechtheit Änderung der Farbe • Solidità colori all'acqua cambio colore Solidez color al agua cambio de color	≥ 5
ISO 105 E01 2002 Waterfastness staining Waterechtheid uitbloeding • Solidité à l'eau dégorgement Wasserechtheit anbluten • Solidità colori all'acqua sfumatura colore Solidez color al agua pérdida de color	≥ 4 - 5
ISO 105 X12 2001 Rubbingfastness dry Wrijftechtheid droog • Solidité au frottement sec Reibungechtheit trocken • Solidità colori allo sfregamento a secco Solidez del color a la frotación en seco	≥ 3 - 4
ISO 105 X12 2001 Rubbingfastness wet Wrijftechtheid nat • Solidité au frottement humide Reibungechtheit nass • Solidità colori allo sfregamento umido Solidez del color a la frotación en húmedo	≥ 3 - 4

(±) These details are approximate. Complete specification details and associated certificates together with tolerances applying to the above can be provided upon request. We reserve the right to improve technical specifications without prior notice. Due to method of manufacture perfect pattern and/or colour matching cannot be guaranteed. In cut-pile carpeting, in rare cases, shading pile reversal may occur without affecting its fitness for use. Shading/pile reversal can not be considered as a manufacturing or a material defect and will not affect the durability of the carpet. For other languages see: www.lano.com

