



Product catalogue
Burmatex®
MANUFACTURERS OF CREATIVE FLOORING 



We are passionate about making our flooring products and aim to create truly inspirational environments for people to enjoy



Burmatex® offers an expansive product range; our traditional fibre bonded sheet and tile ranges include entrance products and ground-breaking structure bonded ranges, which present an expansive colour palette. Our multilevel loop, low level loop, textured loop and cut pile tufted carpet tile ranges, including a specialist entrance barrier product, are inspired by the latest and predicted future design and colour trends.

Burmatex® is a leading UK manufacturer of contract carpets and carpet tiles. We are passionate about creating truly inspirational environments, reflected in our products unique nature across both design and manufacture.

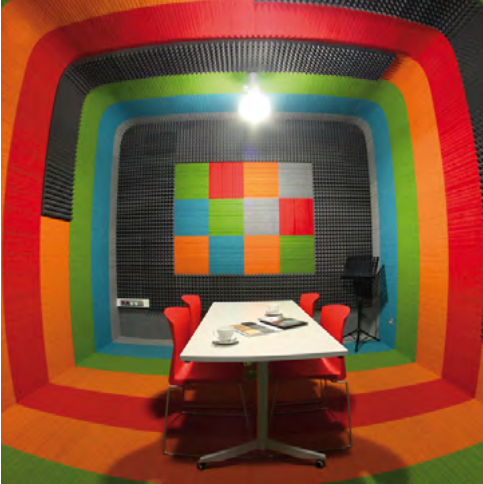
Our products are suitable for use in heavy contract markets and used in a wide variety of private and public sector buildings, including schools, offices, universities and leisure centres.



The **Burmatex®** design team are a driving force in developing product ranges which reflect colour and design trends as well as creating exclusive, bespoke carpet tiles to meet customers' needs and providing our free planned flooring layout design service.



Burmatex® is committed to best environmental practice in our manufacturing, from the sourcing of raw materials, including recycled content, minimising emission of CO₂ and reprocessing waste, use of green electricity and recycled packaging. Our product are now EPD verified by an independent third-party verification of the declaration and data, according to ISO 14025:2006.



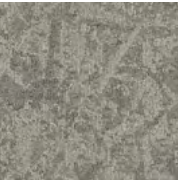
We hope that by reading our catalogue and visiting our website at **www.burmatex.co.uk**, we will inspire you to work with us to create really unique, captivating floor designs.

Burmatex® is a BS EN ISO 9001:2000 registered company (Cert No.FM1440). All products are tested to BSI/CEN standards in relation to durability, wear, flame retardancy, antistatic properties and colour fastness.

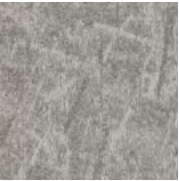




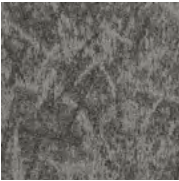
22813 hikari



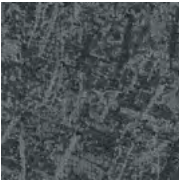
22802 sesame



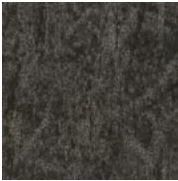
22809 mochi



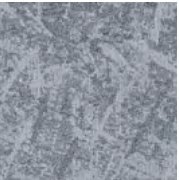
22805 arashi



22814 kumo



22803 sumi



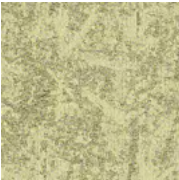
22819 kori



22816 sora



22818 chiru



22817 ginkgo



22815 kawa



22820 hanabi



carbon
neutral



carbon negative
recycled yarn

Specification

Product Description: **Carbon Neutral** Multilevel Loop

Pile Yarn Description: Universal Fibers' Thrive® matter **carbon negative recycled yarn**

Tile Dimensions: 50 cm x 50 cm

Pile Height: 5 mm

Total Thickness: 7.5 mm

Pile Weight: 695 g/m²

Tufts per m²: 226,771/m²

Castor Chair Rating: BS EN 985 Pass

Body Voltage Test: BS ISO 6356:2000 <2kV

Colour Fastness To Light: Minimum grade 6

Flammability: Euroclass Bfl-s1



osaka®

osaka® is an all over pattern inspired by an incredibly vibrant, futuristic, and traditional part of the world, Japan. The contrasts found in Japan inspire the range; new and old, warm and cool, urban and natural.

eco₂matters®

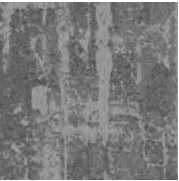
osaka® is 695g, manufactured with Universal Fibers® ground-breaking Thrive® matter yarn, the **world's first carbon negative recycled yarn**. This, combined with our unique **BioBase® recycled backing** – makes **osaka® carbon neutral**.

Initially inspired by a map of Osaka the carpet tile design is geometric yet organic, reminiscent of folded paper origami. Whether looking down on the busy metropolitan streets or up at the forest canopies, you can see the pattern of **osaka®** appear in both city and natural settings.

The abstract nature of the design, teamed with the revived colour palette, allows it to be both soft and strong, expertly working with modern interior spaces.



34504 glacial grey tile
34604 glacial grey plank



34503 norse grey tile
34603 norse grey plank



34502 cool storm tile
34602 cool storm plank



34501 polar black tile
34601 polar black plank



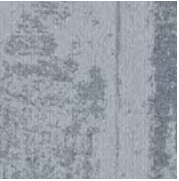
34510 seal grey tile
34610 seal grey plank



34511 hail stone tile
34611 hail stone plank



34512 oslo fog tile
34612 oslo fog plank



34506 ice blue tile
34606 ice blue plank



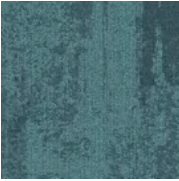
34505 blue water tile
34605 blue water plank



34507 moonrise blue tile
34607 moonrise blue plank



34508 coastal mist tile
34608 coastal mist plank



34509 marine ravine tile
34609 marine ravine plank



Specification

Product Description: **Carbon Neutral** Multilevel Loop
Pile Yarn Description: Universal Fibers' Thrive[®] matter **carbon negative recycled yarn**
Tile Dimensions: 50 cm x 50 cm
Pile Height: 4.5mm
Total Thickness: 7mm
Pile Weight: 624g/m²
Tufts per m²: 26,771/m²
Castor Chair Rating: BS EN 985 Pass
Body Voltage Test: BS ISO 6356:2000 <2kV
Colour Fastness To Light: Minimum grade 6
Flammability: Euroclass Bfl-s1



arctic[®] tile/plank

arctic[®] is inspired by the changing landscape of the Arctic region. Organic lines cutting through icy rock, cold water flowing down frozen mountains and glacial river rapids inspire the movement in the design.

The colour palette consists of 12 colours inspired by the natural elements of the Arctic - ice blues and cool greys amongst soft subtle warms, with marine-like green tones to further enhance the collection.

arctic[®] is available in both tile and plank, allowing you the freedom to express arctic in either option, creating unique structures and patterns to suit your project.

eco²matters[®]

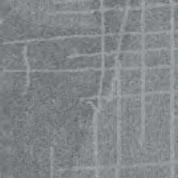
Made from Universal Fibers[®] Thrive[®] matter yarn, the world's first **carbon negative recycled** yarn, and our unique **BioBase[®] recycled** backing, **arctic[®]** is **carbon neutral**. The design and 12 colour palette are inspired by the dramatic icy landscape of the arctic region we hope to help preserve.



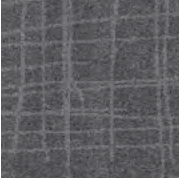
31906 grey linen



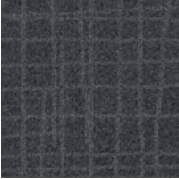
31908 cotton canvas



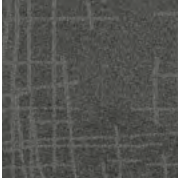
31901 silk white



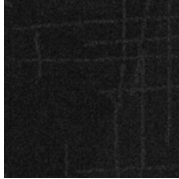
31902 silver pear



31903 after dark



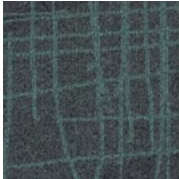
31904 crushed cord



31905 liquorice lace



31910 golden slice



31911 minty mesh



31912 deep pistachio



31907 blue velvet



31909 satin sapphire

Specification

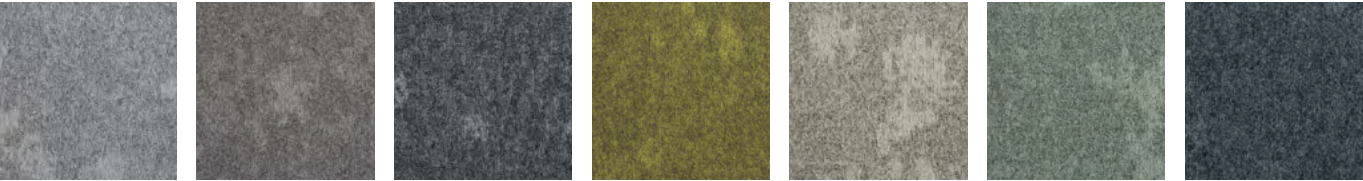
Product Description: Multilevel Loop
Pile Yarn Description: 100% Solution Dyed Nylon 6 (Polyamide-PA)
Tile Dimensions: 50 cm x 50 cm
Pile Height: 5mm
Total Thickness: 7.5 mm
Pile Weight: 774 g/m²
Tufts per m²: 250,393/m²
Castor Chair Rating: BS EN 985 Pass
Body Voltage Test: BS ISO 6356:2000 <2kV
Colour Fastness To Light: Minimum grade 6
Flammability: Euroclass Bfl-s1



vibe®

vibe® is inspired by torn netted structures with areas of strong pattern breaking away into sections of plain. Whilst the grid is the main feature of the design, underneath are subtle broken shapes created from torn and folded papers. This building of layers within the design creates a luxurious, velvet like appearance.

The vibrant palette of 12 colours provides colour on grey and tonal options. The four core greys make up the background to the colour on greys with the grid pattern taking the colour. From pastel tones to bright pops of highlight, is it suitable for all manner of interiors and installations.



Specification

Product Description: **Carbon Neutral** Multilevel Loop
Pile Yarn Description: Universal Fibers® Thrive® matter **carbon negative recycled** yarn
Tile Dimensions: 50 cm x 50 cm
Pile Height: 5.2 mm
Total Thickness: 7.0 mm
Pile Weight: 678 g/m²
Tufts per m²: 236,220/m²
Castor Chair Rating: BS EN 985 Pass
Body Voltage Test: BS ISO 6356:2000 <2kV
Colour Fastness To Light: Minimum grade 6
Flammability: Euroclass Bfl-s1



dapple®

dapple®'s organic design echoes the effect of light being filtered through trees and scattered onto the forest floor. Inspired by nature, the 12 colour palette helps you connect your built interior to the natural environment.

eco₂matters®

Made from Universal Fibers® Thrive® matter yarn, the world's first **carbon negative recycled** yarn, and our unique **BioBase® recycled** backing, **dapple®** is carbon neutral.



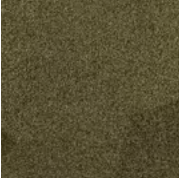
34201 silver pitch



34202 zinc facet



34203 grey horizon



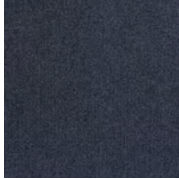
34204 gold patina



34205 light angle



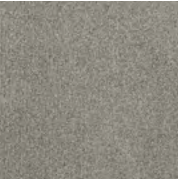
34206 sky tint



34207 blue facade



34208 coal layer



34209 clay screen



34210 metal edge



34211 green space



34212 ash profile

Specification

Product Description: Multilevel Loop
Pile Yarn Description: 100% Solution Dyed Nylon 6 (Polyamide-PA)
Tile Dimensions: 50 cm x 50 cm
Pile Height: 5 mm
Total Thickness: 7.5 mm
Pile Weight: 770 g/m²
Tufts per m²: 259,842/m²
Castor Chair Rating: BS EN 985 Pass
Body Voltage Test: BS ISO 6356:2000 <2kV
Colour Fastness To Light: Minimum grade 6
Flammability: Euroclass Bfl-s1



tiltnturn®

tiltnturn® is a 770g product which reflects the amazing effects of light and shadow which surround us every day. The design and the colour palette are inspired by how light catches different planes within architectural structures, creating changing shadows and varying lines.



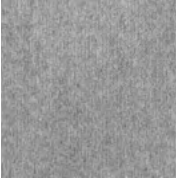
34001 steel tower



34002 warm frost



34003 concrete lead



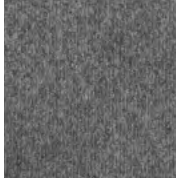
34004 granite vapour



34005 city clay



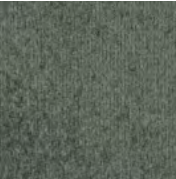
34006 skylight beam



34011 twilight dawn



34008 urban nickel



34010 sage vista



34007 harbour view



34009 river dew



34012 navy shore

Specification

Product Description: Multilevel Loop
Pile Yarn Description: 100% Solution Dyed Nylon 6 (Polyamide-PA)
Tile Dimensions: 50 cm x 50 cm
Pile Height: 4.5 mm
Total Thickness: 7.0 mm
Pile Weight: 628 g/m²
Tufts per m²: 226,771/m²
Castor Chair Rating: BS EN 985 Pass
Body Voltage Test: BS ISO 6356:2000 <2kV
Colour Fastness To Light: Minimum grade 6
Flammability: Euroclass Bfl-s1



balance grade®

balance grade® is inspired by misty Chicago mornings where the dew is fresh from Lake Michigan. It is a soft and subtle design which leaves a calming effect across the floor. It is complemented by the other two ranges in the balance collection: **balance grid®** and **balance grade®**.



33901 steel grey



33902 warm dusk



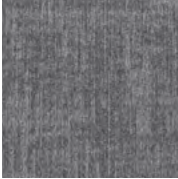
33903 concrete core



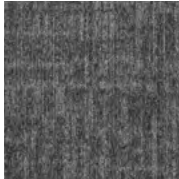
33904 granite mesh



33905 smoky clay



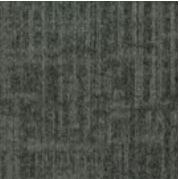
33906 skylight chrome



33911 twilight fog



33908 black nickel



33910 sage glass



33907 harbour cloud



33909 river haze



33912 navy night

Specification

Product Description: Multilevel Loop
Pile Yarn Description: 100% Solution Dyed Nylon 6 (Polyamide-PA)
Tile Dimensions: 50 cm x 50 cm
Pile Height: 4.5 mm
Total Thickness: 7.0 mm
Pile Weight: 628 g/m²
Tufts per m²: 226,771/m²
Castor Chair Rating: BS EN 985 Pass
Body Voltage Test: BS ISO 6356:2000 <2kV
Colour Fastness To Light: Minimum grade 6
Flammability: Euroclass Bfl-s1

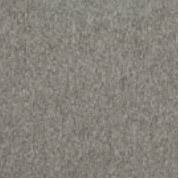


balance grid®

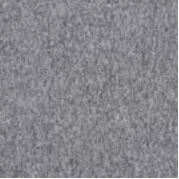
balance grade® is inspired by the strong lines seen in high rise skyscrapers, shining and gleaming. It is a classic yet contemporary design which works alone or paired with the other two designs in the balance collection: **balance grid®** and **balance grade®**.



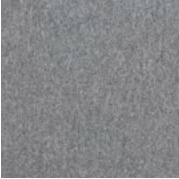
34101 steel



34102 warm



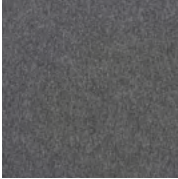
34103 concrete



34104 granite



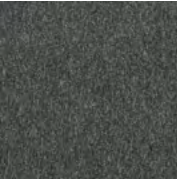
34105 clay



34106 skylight



34108 nickel



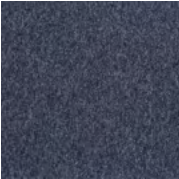
34111 twilight



34110 sage



34107 harbour



34109 river



34112 navy

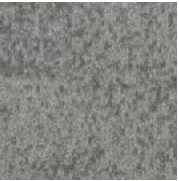
Specification

Product Description: Multilevel Loop
Pile Yarn Description: 100% Solution Dyed Nylon 6 (Polyamide-PA)
Tile Dimensions: 50 cm x 50 cm
Pile Height: 4.5 mm
Total Thickness: 7.0 mm
Pile Weight: 628 g/m²
Tufts per m²: 226,771/m²
Castor Chair Rating: BS EN 985 Pass
Body Voltage Test: BS ISO 6356:2000 <2kV
Colour Fastness To Light: Minimum grade 6
Flammability: Euroclass Bfl-s1

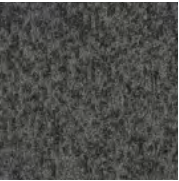


balance ground®

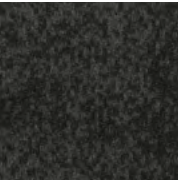
balance grade® is inspired by the rough texture of sidewalks and pavements that run throughout the city of Chicago. It is strong in tactile elements but soft in colour, designed to give your space some breathing room. When used in conjunction with **balance grid®** and **balance grade®** it is grounding and neutral.



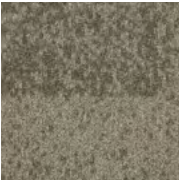
22901 light



22902 shade



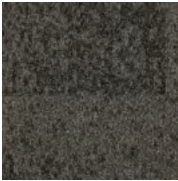
22903 dark



22905 stone



22909 birch



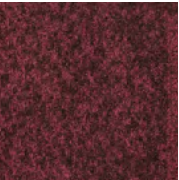
22906 pave



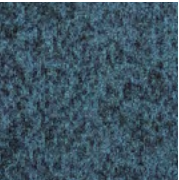
22907 ground



22908 brick



22911 bloom



22910 air



22904 deep



22912 leaf

Specification

Product Description: Multilevel Loop

Pile Yarn Description: 100% Solution Dyed Aquafil Econyl® Nylon (Polyamide-PA)

Tile Dimensions: 50 cm x 50 cm

Pile Height: 5 mm

Total Thickness: 7.5 mm

Pile Weight: 910 g/m²

Tufts per m²: 236,220/m²

Castor Chair Rating: BS EN 985 Pass

Body Voltage Test: BS ISO 6356:2000 <2kV

Colour Fastness To Light: Minimum grade 6

Flammability: Euroclass Bfl-s1



rainfall®

rainfall®'s inspiration was trying to capture those first moments of a summer storm. The first spots of rain punctuate the surface, gathering in intensity until the whole colour is several shades darker.

This multilevel loop product encompasses changes of tone in varying proportions throughout, resulting in an all over effect of subtlety combined with soft angles.

These characteristics ensure that each installation of appears slightly different from the last. An enticing palette of 12 colours provides bright and light options, through to more concentrated and atmospheric tones, suitable for all manner of installations and interiors.



22201 ice



22202 ridge



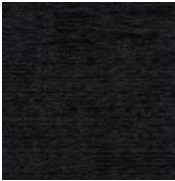
22203 point



22204 north



22205 moose



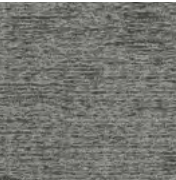
22206 anchor



22207 creek



22208 lake



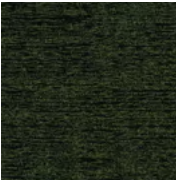
22209 husky



22210 wolf



22211 spruce



22212 valley

Specification

Product Description: Multilevel Loop
Pile Yarn Description: 100% Solution Dyed Aquafil Econyl® Nylon (Polyamide-PA)
Tile Dimensions: 50 cm x 50 cm
Pile Height: 5 mm
Total Thickness: 7.5 mm
Pile Weight: 800 g/m²
Tufts per m²: 226,771/m²
Castor Chair Rating: BS EN 985 Pass
Body Voltage Test: BS ISO 6356:2000 <2kV
Colour Fastness To Light: Minimum grade 6
Flammability: Euroclass Bfl-s1

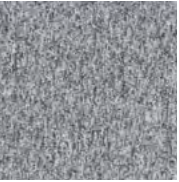


alaska®

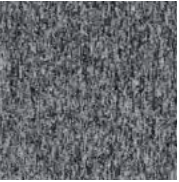
alaska® is our first multilevel loop product and its name was also our inspiration.

A concise palette of twelve colours in this 800g product, combined with the tactile and textural finish, all relate to the invigorating outdoors of this beautiful state. This enables the creation of nature-inspired flooring schemes, while not excluding the possibility of a more classic effect.

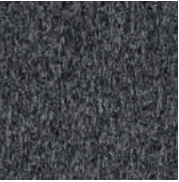
Used alone, or in combination with other burmatex ranges **alaska®** brings an additional layer of flexibility and creativity to our constantly evolving product portfolio.



34705 ice mineral



34701 slate grey



34702 silver salt



34703 stone shadow



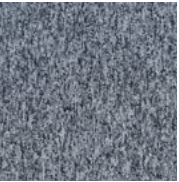
34704 gravel greige



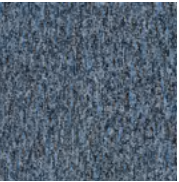
34706 quartz sand



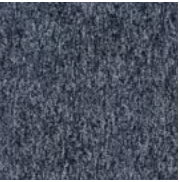
34707 sepia fusion



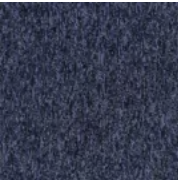
34712 cold cove



34708 cyan flux



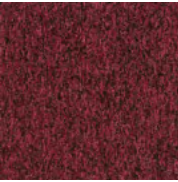
34709 base blue



34710 navy element



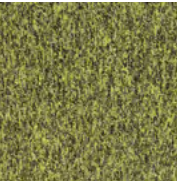
34716 purple prism



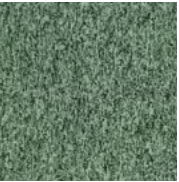
34715 cherry shade



34711 bronze brown



34713 ultra yellow

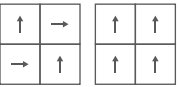


34714 jade layer



Specification

Product Description: **Low Carbon** Level Loop
Pile Yarn Description: 100% **Econyl® regenerated recyclable** solution dyed nylon
Tile Dimensions: 50 cm x 50 cm
Pile Height: 4.3 mm
Total Thickness: 6.8 mm
Pile Weight: 550 g/m²
Tufts per m²: 177,165/m²
Castor Chair Rating: BS EN 985 Pass
Body Voltage Test: BS ISO 6356:2000 <2kV
Colour Fastness To Light: Minimum grade 6
Flammability: Euroclass Bfl-s1



infinity®

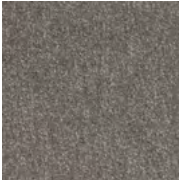
infinity® is a 550g level loop pile carpet tile collection of 16 shades, inspired by flecked textures and colours found in raw materials and nature. Visual inspiration from rocks, gemstones, coastlines, and minerals help to create the individual aspect of this heavy commercial range. This specific characteristic of the tile provides excellent soil hiding properties..

eco₂matters®

Made from 100% Econyl® **regenerated recyclable** solution dyed nylon yarn and our unique **BioBase® recycled** backing, **infinity®** is **low carbon** and a considered choice for sustainable building projects.



21813 light beige



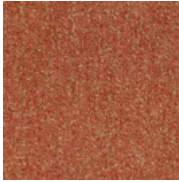
21814 medium beige



21815 dark beige



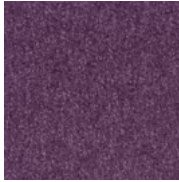
21915 dark beige stripe



21819 orange



21820 red



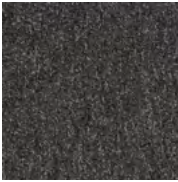
21821 purple



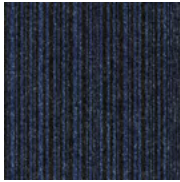
21817 light grey



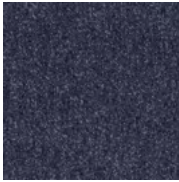
21803 medium grey



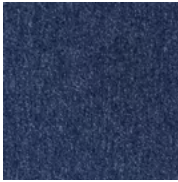
21816 metal grey



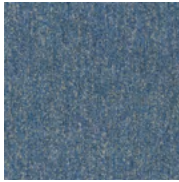
21906 sea blue stripe



21822 deep blue



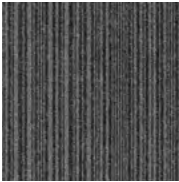
21806 sea blue



21810 sky blue



21802 coal grey



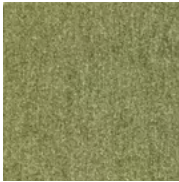
21902 coal grey stripe



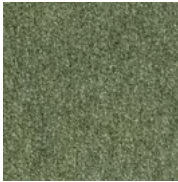
21903 medium grey stripe



21801 jet black



21811 green



21818 moss green



low
carbon



EgoCycle® 75
recycled yarn

Specification

Product Description: **Low Carbon** Level Loop

Pile Yarn Description: **EgoCycle® 75 recycled** solution dyed nylon

Tile Dimensions: 50 cm x 50 cm

Pile Height: 3.0 mm

Total Thickness: 5.5 mm

Pile Weight: 500 g/m²

Tufts per m²: 196,850/m²

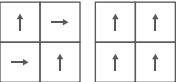
Castor Chair Rating: BS EN 985 Pass

Body Voltage Test: BS ISO 63562000 <2kV

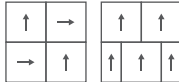
Colour Fastness To Light: Minimum grade 6

Flammability: Euroclass Bfl-s1

go to



go to stripe



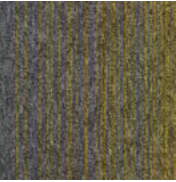
go to®

go to® offers two designs, sixteen plains and four stripe options. The range of colours has been increased to create this attractively practical, versatile and flexible palette.

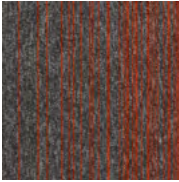
go to® has a proven track record of high performance and resilience that **Burmatex®** carpet tiles are known for. This core level loop range is the go to choice for use

eco₂matters®

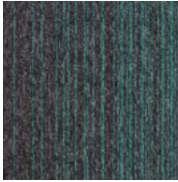
go to® uses **EgoCycle® 75 recycled** solution dyed nylon. This, combined with our **BioBase® recycled** backing produces a **low carbon** update to this reliable product range.



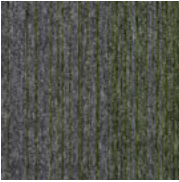
32701 south beach tile
32901 south beach plank



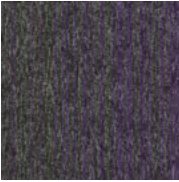
32702 palm springs tile
32902 palm springs plank



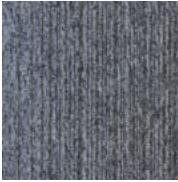
32703 ocean drive tile
32903 ocean drive plank



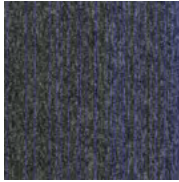
32705 turtle bay tile
32905 turtle bay plank



32704 havana town tile
32904 havana town plank



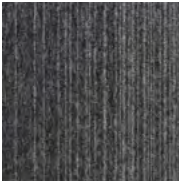
32710 icelandic isle tile
32910 icelandic isle plank



32711 nordic fjord tile
32911 nordic fjord plank



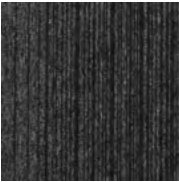
32708 bergen city tile
32908 bergen city plank



32712 polar drift tile
32912 polar drift plank



32707 baffin island tile
32907 baffin island plank



32713 galapagos bay tile
32913 galapagos bay plank

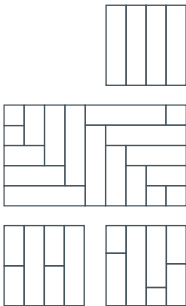
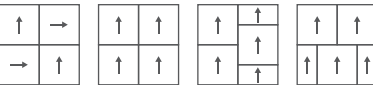


32706 bora bora tile
32906 bora bora plank



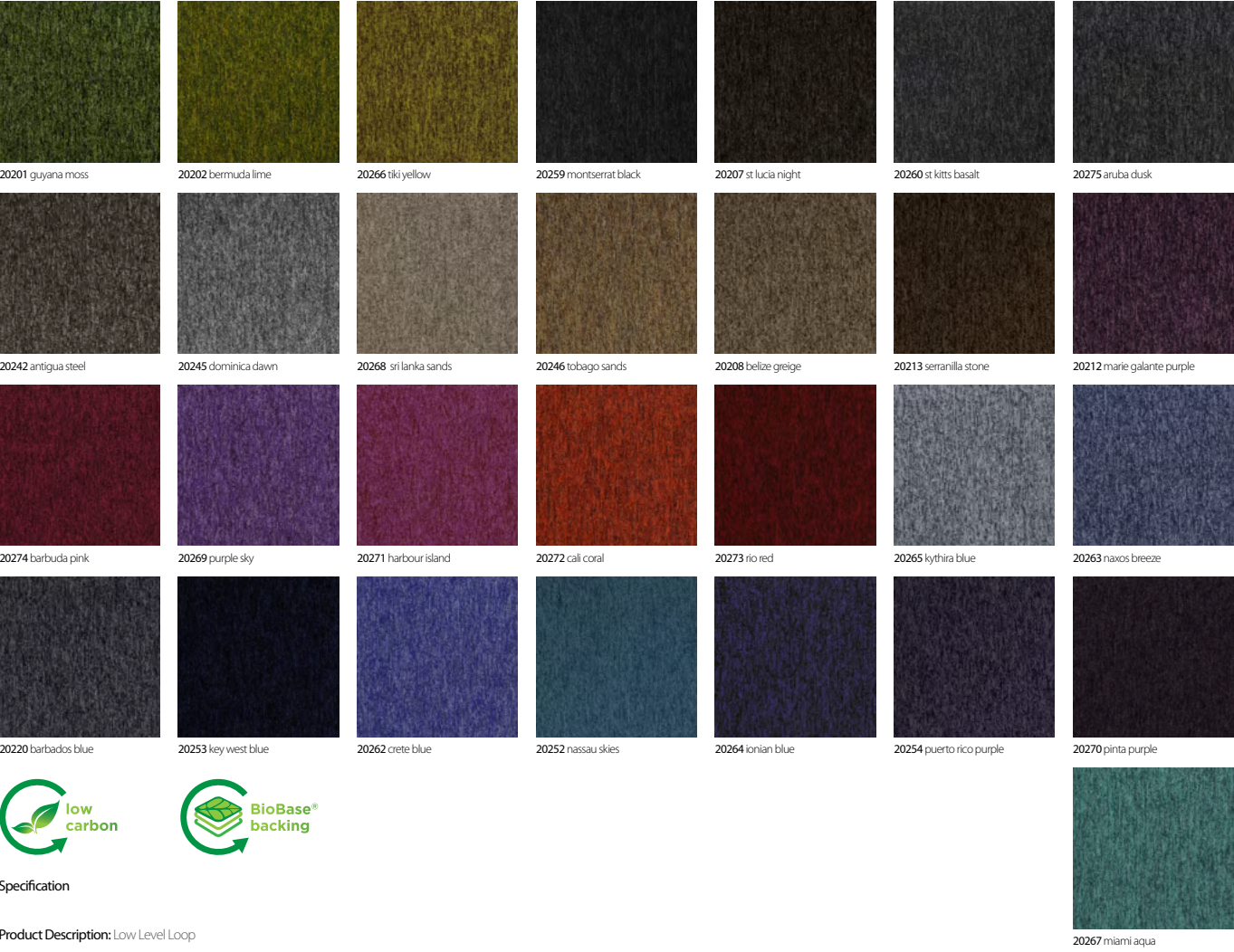
Specification

Product Description: Low Level Loop
Pile Yarn Description: 100% Solution Dyed Nylon (Polyamide-PA)
Tile Dimensions: 50 cm x 50 cm, 25 cm x 100 cm
Pile Height: 4 mm
Total Thickness: 6.5 mm
Pile Weight: 600 g/m²
Tufts per m²: 196,500/m²
Castor Chair Rating: BS EN 985 Pass
Body Voltage Test: BS ISO 6356:2000 <2kV
Colour Fastness To Light: Minimum grade 6
Flammability: Euroclass Bfl-s1



tivoli mist[®] tile/plank

tivoli mist[®] offers a flexible range of commercial carpet tiles, designed to provide creativity, colour and individuality. With colour pairings that blend seamlessly together, **tivoli mist[®]** affords the possibility of transitioning from one zoned area to another without the use of hard lines.



Specification

Product Description: Low Level Loop

Pile Yarn Description: 100% Solution Dyed Nylon (Polyamide-PA)

Tile Dimensions: 50 cm x 50 cm

Pile Height: 4 mm

Total Thickness: 6.5 mm

Pile Weight: 600 g/m²

Tufts per m²: 196.500/m²

Castor Chair Rating: BS EN 985 Pass

Body Voltage Test: BS ISO 6356:2000 <2kV

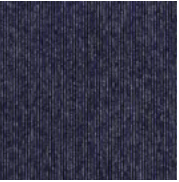
Colour Fastness To Light: Minimum grade 6

Flammability: Euroclass Bfl-s1



tivoli® tile

tivoli® presents a high performance loop pile (class 33) product offering, made with 100% solution dyed nylon and including **tivoli®**, **tivoli® online** and **tivoli® multiline**.



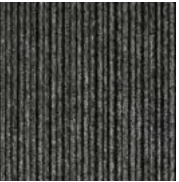
online
20607 aegean sea



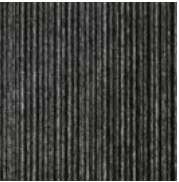
online
20608 haiti haze



online
20609 perissa sand



multiline
20703 melanesia grey



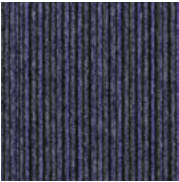
multiline
20707 tenerife black



multiline
20711 seychelles beige



multiline
20709 mediterranean topaz



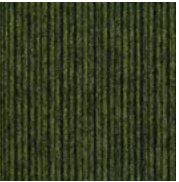
multiline
20708 santorini blue



multiline
20712 cayman purple



multiline
20713 takutea red



multiline
20710 everglade green



Specification

Product Description: Low Level Loop
Pile Yarn Description: 100% Solution Dyed Nylon (Polyamide-PA)
Tile Dimensions: 50 cm x 50 cm
Pile Height: 4 mm
Total Thickness: 6.5 mm
Pile Weight: 600 g/m²
Tufts per m²: 196,500/m²
Castor Chair Rating: BS EN 985 Pass
Body Voltage Test: BS ISO 6356:2000 <2kV
Colour Fastness To Light: Minimum grade 6
Flammability: Euroclass Bfl-s1



tivoli® tile (cont.)

Varied plain, **tivoli®**, classic pinstripe, **tivoli® online** and contemporary striped, **tivoli® multiline**, designs can be used individually or in a bespoke arrangement, with the expansive, modern colour palette enabling classic, neutral schemes or innovative, creative layouts.



21101 guayana moss



21102 bermuda lime



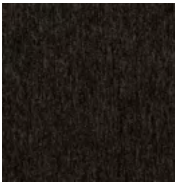
21166 tiki yellow



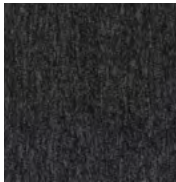
21159 montserrat black



21160 st kitts basalt



21107 st lucia night



21175 aruba dusk



21142 antigua steel



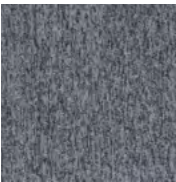
21145 dominica dawn



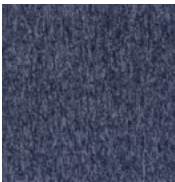
21168 sri lanka sands



21108 belize greige



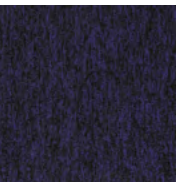
21165 kythira blue



21163 navos breeze



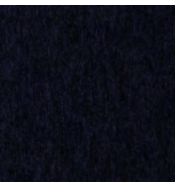
21120 barbados blue



21164 ionian blue



21152 nassau skies



21153 key west blue



21169 purple sky



21172 cali coral



21167 miami aqua



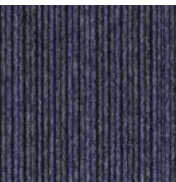
multiline
20703 melanesia grey



multiline
20707 tenerife black



multiline
21211 seychelles beige



multiline
21208 santorini blue



multiline
21212 cayman purple



multiline
21209 mediterranean topaz

Specification

Product Description: Low Level Loop

Pile Yarn Description: 100% Solution Dyed Nylon (Polyamide-PA)

Tile Dimensions: 25 cm x 100 cm

Pile Height: 4 mm

Total Thickness: 6.5 mm

Pile Weight: 600 g/m²

Tufts per m²: 196,500/m²

Castor Chair Rating: BS EN 985 Pass

Body Voltage Test: BS ISO 6356:2000 <2kV

Colour Fastness To Light: Minimum grade 6

Flammability: Euroclass Bfl-s1



low
carbon



BioBase®
backing

tivoli® plank

tivoli® carpet planks offer two loop pile designs – a solid colour **tivoli®** and a stripe **tivoli® multiline**. The colour selection creates a broad palette with complementary colours across the two designs developing creative installation options.

tivoli® carpet planks are made with 100% solution dyed nylon and are suitable for heavy commercial use (class 33).



1834 soap stone



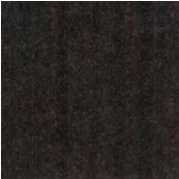
1891 pewter cloud



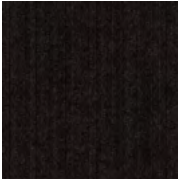
1805 diamond dust



1803 concrete jungle



1802 zinc asphalt



1801 carbon steel



1809 ink stone



1814 blue monday



1813 lavender oil



1890 purple emperor



1886 pink diamond



1812 indigo snake



1882 turquoise mountain



1883 emerald coast



1830 lime street



1887 gold quest



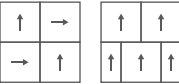
1839 mandarin duck



1845 scarlet runner

Specification

Product Description: Structure Bonded®
Pile Yarn Description: 85% Polypropylene 15% Nylon
Tile Dimensions: 50 cm x 50 cm
Total Thickness: 7.8 mm
Pile Weight: 950 g/m²
Castor Chair Rating: BS EN 985 Pass
Body Voltage Test: BS ISO 6356:2000 <2kV
Colour Fastness To Light: Minimum grade 6
Flammability: Euroclass Bfl-s1



lateral®

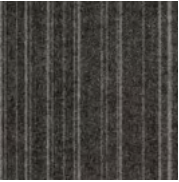
lateral® is the definitive product offering for all commercial interiors, schools, public buildings, residential schemes and design and build projects. **lateral®**'s ground-breaking design stems from our innovative, structure bonded manufacturing technology using an unusual mix of textures from cut through to loop pile. It is available in a range of 18 colours.



12912 cool stone



12926 pewter track



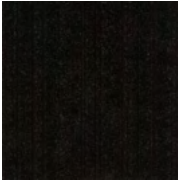
12930 diamond coal



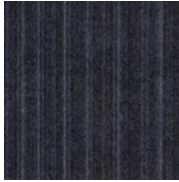
12906 metal shock



12928 night suede



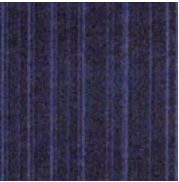
12929 pitch black



12923 ink film



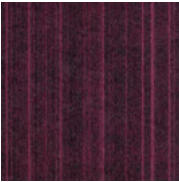
12927 blue reef



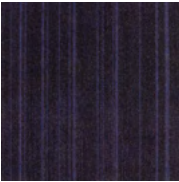
12924 lavender seed



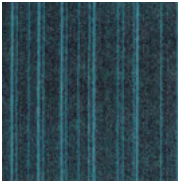
12920 deep purple



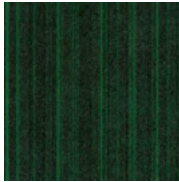
12916 pink panther



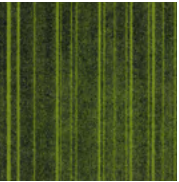
12931 indigo stack



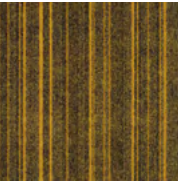
12922 turquoise opal



12925 emerald city



12902 lime zest



12918 rolled gold



12901 sun burst



12904 scarlet fever

Specification

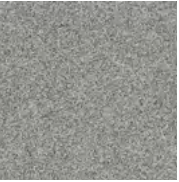
Product Description: Structure Bonded®
Pile Yarn Description: 85% Polypropylene 15% Nylon
Tile Dimensions: 50 cm x 50 cm
Total Thickness: 8.0 mm
Pile Weight: 1000 g/m²
Castor Chair Rating: BS EN 985 Pass
Body Voltage Test: BS ISO 6356:2000 <2kV
Colour Fastness To Light: Minimum grade 6
Flammability: Euroclass Bfl-s1



code

code is the next generation in structure-bonded® design, evolving from the technology that created lateral®.

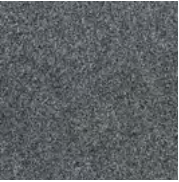
code uses subtle contrasting stripes of colour and texture for a stylish defined look. Combine **code** with zip and lateral® to produce a unique floor design.



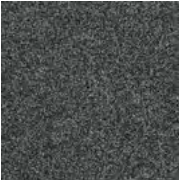
33201 cloud



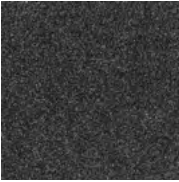
33202 pearl



33203 pebble



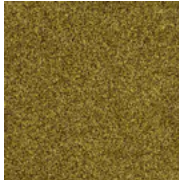
33204 shale



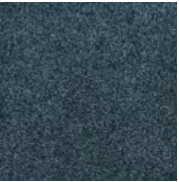
33205 mussel



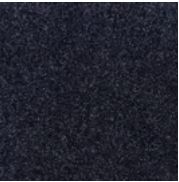
33206 gull



33207 gorse



33208 surf



33209 wave



33210 heather

Specification

Product Description: Cut Pile
Pile Yarn Description: 100% Solution Dyed Aquafil Econyl® Nylon (Polyamide-PA)
Tile Dimensions: 50 cm x 50 cm
Pile Height: 7 mm
Total Thickness: 9.5 mm
Pile Weight: 1300 g/m²
Tufts per m²: 165,354/m²
Castor Chair Rating: BS EN 985 Pass
Body Voltage Test: BS ISO 6356:2000 <2kV
Colour Fastness To Light: Minimum grade 6
Flammability: Euroclass Bfl-s1



origin®

origin® is a sophisticated and plush range, working as a stand-alone product as well as with other carpet tiles in our collection, such as **osaka®**, **rainfall®** and **alaska®**. The new colouration of **origin®** was inspired by coastal themes and forecasted colour trends. Organic and natural, the colour palette is usable, classic and clean. Looking to the colour names chosen, you can clearly see the oceanic inspiration: fresh and crisp surf, deep and dramatic wave, smooth pebble and atmospheric cloud, to name a few in the palette of 10.



Q 12031 tacoma tan
□ 12131 cuban rum

Q 12032 atlanta beige
□ 12132 belgian beige

Q 12034 austin clay
□ 12134 latvian honey

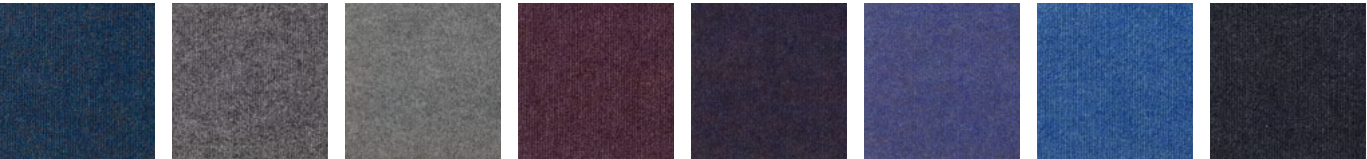
Q 12001 nashville slate
□ 12101 indian ebony

Q 12002 chicago grey
□ 12102 danish charcoal

Q 12003 pittsburgh steel
□ 12103 netherlands slate

Q 12005 little rock
□ 12105 canadian diamond

Q 12014 1st lois blue
□ 12114 english blue



Q 12011 erie blue
□ 12111 andorran blue

Q 12017 san francisco bay
□ 12117 norwegian ford

Q 12004 houston blue
□ 12104 german steel

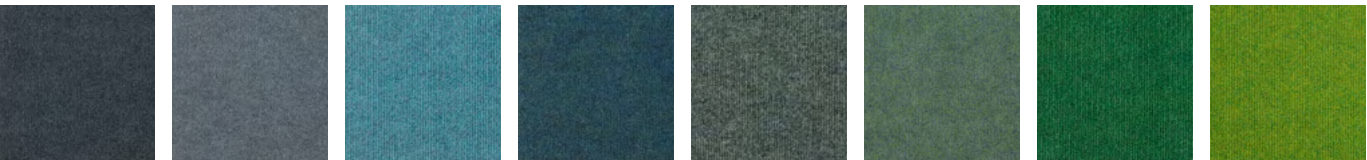
Q 12080 dallas heat
□ 12180 japanese indigo

Q 12012 san diago sapphire
□ 12112 portuguese purple

Q 12013 minneapolis mauve
□ 12113 luxembourg lavender

Q 12081 grand rapids
□ 12181 russian blue

Q 12007 westport navy
□ 12107 czech blue



Q 12008 seattle blue
□ 12108 icelandic sea

Q 12019 portland blue
□ 12119 swiss ice

Q 12082 amarillo sky
□ 12182 brazilian sky

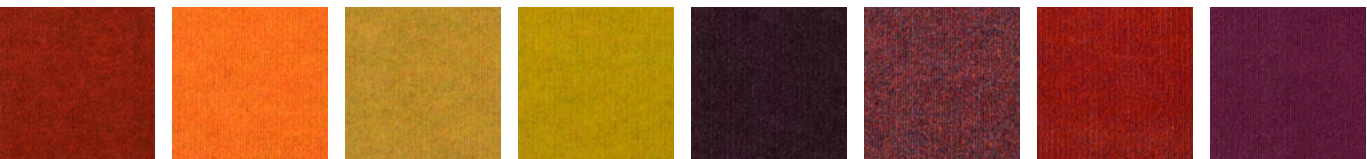
Q 12022 omaha opal
□ 12122 chinese turquoise

Q 12025 augusta green
□ 12125 monaco marina

Q 12023 miami jade
□ 12123 greek jade

Q 12083 moreno valley
□ 12183 colombian emerald

Q 12030 los angeles lime
□ 12130 lithuanian lime



Q 12051 cincinnati red
□ 12151 spanish sunset

Q 12039 orlando orange
□ 12139 ukrainian orange

Q 12087 aurora gold
□ 12187 bolivian gold

Q 12088 fresno sun
□ 12188 costa rican sun

Q 12084 charlotte boulevard
□ 12184 australian violet

Q 12043 arlington rose
□ 12143 chilean wine

Q 12085 baton rouge
□ 12185 hungarian paprika

Q 12086 providence pink
□ 12186 cambodian silk



Specification Q

Product Description: Fibre Bonded
Pile Yarn Description: 85% Polypropylene 15% Nylon
Roll Length: 30m
Roll Width: 2m
Total Thickness: 6.0 mm
Total Weight: 950 g/m²
Castor Chair Rating: BS EN 985 Pass
Body Voltage Test: BS ISO 6356:2000 <2kV
Colour Fastness To Light: Minimum grade 6
Flammability: Euroclass Efl-s1

Q roll 4200 sidewalk
□ tile cordiale



Specification □

Product Description: Fibre Bonded
Pile Yarn Description: 85% Polypropylene 15% Nylon
Tile Dimensions: 50 cm x 50 cm
Total Thickness: 7.8 mm
Pile Weight: 950 g/m²
Castor Chair Rating: BS EN 985 Pass
Body Voltage Test: BS ISO 6356:2000 <2kV
Colour Fastness To Light: Minimum grade 6
Flammability: Euroclass Bfl-s1



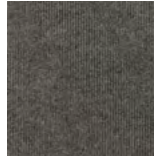
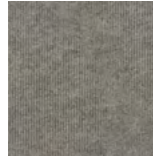
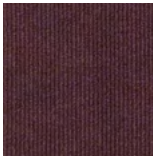
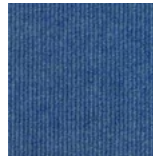
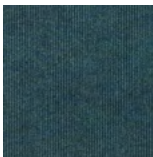

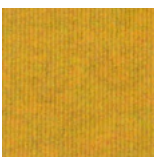
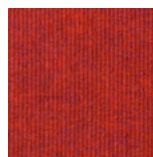
4200

4200 is an extremely durable fine ribbed fibre bonded carpet sheet. It is ideally suited for schools, public buildings and commercial offices. Made from a high performance mix of solution dyed fibres, it is available in a range of 32 vibrant colours.

cordiale

cordiale is an extremely durable fine ribbed fibre bonded carpet tile. It is ideally suited for schools, public buildings and commercial offices. Made from a high performance mix of solution dyed fibres, it is available in a range of 32 vibrant colours.



							
<div><div>Q</div><div>11531 buffalo brown</div></div> <div><div>Q</div><div>11831 rishworth brown</div></div>	<div><div>Q</div><div>11532 harlem beige</div></div> <div><div>Q</div><div>11832 buckingham beige</div></div>	<div><div>Q</div><div>11534 rockland stone</div></div> <div><div>Q</div><div>11834 hereford stone</div></div>	<div><div>Q</div><div>11501 edison slate</div></div> <div><div>Q</div><div>11801 sedburgh slate</div></div>	<div><div>Q</div><div>11502 oregon grey</div></div> <div><div>Q</div><div>11802 gresham grey</div></div>	<div><div>Q</div><div>11503 lexington grey</div></div> <div><div>Q</div><div>11803 gordonstoun grey</div></div>	<div><div>Q</div><div>11505 waldorf grey</div></div> <div><div>Q</div><div>11805 sherborne grey</div></div>	<div><div>Q</div><div>11514 virginia blue</div></div> <div><div>Q</div><div>11814 oriel blue</div></div>
							
<div><div>Q</div><div>11511 newark blue</div></div> <div><div>Q</div><div>11811 repton blue</div></div>	<div><div>Q</div><div>11517 bowery blue</div></div> <div><div>Q</div><div>11817 winchester blue</div></div>	<div><div>Q</div><div>11504 staten steel</div></div> <div><div>Q</div><div>11804 durham steel</div></div>	<div><div>Q</div><div>11580 dutchess purple</div></div> <div><div>Q</div><div>11880 exeter indigo</div></div>	<div><div>Q</div><div>11512 bergen sapphire</div></div> <div><div>Q</div><div>11812 stamford sapphire</div></div>	<div><div>Q</div><div>11513 new york mauve</div></div> <div><div>Q</div><div>11813 malvern mauve</div></div>	<div><div>Q</div><div>11581 richmond blue</div></div> <div><div>Q</div><div>11881 strathallan blue</div></div>	<div><div>Q</div><div>11507 montana blue</div></div> <div><div>Q</div><div>11807 kings navy</div></div>
							
<div><div>Q</div><div>11508 hudson blue</div></div> <div><div>Q</div><div>11808 marlborough blue</div></div>	<div><div>Q</div><div>11519 new haven blue</div></div> <div><div>Q</div><div>11819 bradfield blue</div></div>	<div><div>Q</div><div>11582 long island sky</div></div> <div><div>Q</div><div>11882 dover teal</div></div>	<div><div>Q</div><div>11522 washington jade</div></div> <div><div>Q</div><div>11822 harrow green</div></div>	<div><div>Q</div><div>11525 madison marine</div></div> <div><div>Q</div><div>11825 rossall jade</div></div>	<div><div>Q</div><div>11523 newburgh jade</div></div> <div><div>Q</div><div>11823 monmouth moss</div></div>	<div><div>Q</div><div>11583 litchfield green</div></div> <div><div>Q</div><div>11883 ackworth green</div></div>	<div><div>Q</div><div>11530 colorado lime</div></div> <div><div>Q</div><div>11830 loreto lime</div></div>
							
<div><div>Q</div><div>11551 saratoga red</div></div> <div><div>Q</div><div>11851 rugby red</div></div>	<div><div>Q</div><div>11539 florida flame</div></div> <div><div>Q</div><div>11839 oundle orange</div></div>	<div><div>Q</div><div>11587 westchester gold</div></div> <div><div>Q</div><div>11887 epsom gold</div></div>	<div><div>Q</div><div>11588 syracuse sun</div></div> <div><div>Q</div><div>11888 kingsmead gold</div></div>	<div><div>Q</div><div>11584 queens purple</div></div> <div><div>Q</div><div>11884 wellington purple</div></div>	<div><div>Q</div><div>11543 texas rose</div></div> <div><div>Q</div><div>11843 keble rose</div></div>	<div><div>Q</div><div>11585 cortland rouge</div></div> <div><div>Q</div><div>11885 rougemont red</div></div>	<div><div>Q</div><div>11586 trenton pink</div></div> <div><div>Q</div><div>11886 dulwich pink</div></div>



Specification Q

Product Description: Fibre Bonded
Pile Yarn Description: 85% Polypropylene 15% Nylon
Roll Length: 30m
Roll Width: 2m
Total Thickness: 6.5 mm
Total Weight: 940 g/m²
Castor Chair Rating: BS EN 985 Pass
Body Voltage Test: BS ISO 6356:2000 <2kV
Colour Fastness To Light: Minimum grade 6
Flammability: Euroclass Bfl-s1

Q roll 4200 sidewalk
Q tile cordiale



Specification Q

Product Description: Fibre Bonded
Pile Yarn Description: 85% Polypropylene 15% Nylon
Tile Dimensions: 50 cm x 50 cm
Total Thickness: 7.8 mm
Pile Weight: 940 g/m²
Castor Chair Rating: BS EN 985 Pass
Body Voltage Test: BS ISO 6356:2000 <2kV
Colour Fastness To Light: Minimum grade 6
Flammability: Euroclass Bfl-s1



4400

4400 is an extremely durable broad ribbed fibre bonded carpet sheet and is particularly suited for public buildings, such as schools, and other commercial interiors. Made from a high performance mix of solution dyed fibres, it is available in a wide range of 32 exciting colourways.

academy®

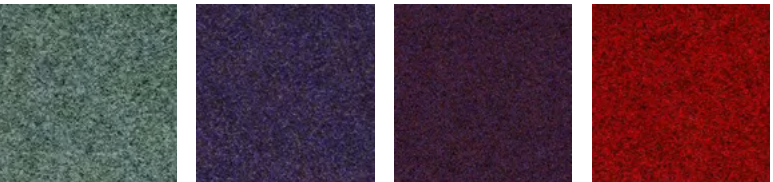
academy® is an extremely durable broad ribbed fibre bonded carpet tile and is particularly suited for public buildings, such as schools, and other commercial interiors. Made from a high performance mix of solution dyed fibres, it is available in a wide range of 32 exciting colourways.



6070 yakama slate 6040 armenian grey 6050 norman steel 6023 iceni blue 6060 barona blue 6081 bavarian blue 6028 saxon blue



6056 spartan mauve 6061 skydancer 6036 phoenician green 6083 norse green 6045 trojan green 6055 dorian azure 6082 mayan sky



6022 assyrian jade 6066 navajo mauve 6090 persian purple 6062 red lake

Specification

Product Description: Fibre Bonded
Pile Yarn Description: 85% Polypropylene 15% Nylon
Roll Length: 30m
Roll Width: 2m
Total Thickness: 6.5 mm
Total Weight: 1150 g/m²
Castor Chair Rating: BS EN 985 Pass
Body Voltage Test: BS ISO 6356:2000 <2kV
Colour Fastness To Light: Minimum grade 6
Flammability: Euroclass Dfl-s1

Specification

Product Description: Fibre Bonded
Pile Yarn Description: 85% Polypropylene 15% Nylon
Tile Dimensions: 50 cm x 50 cm
Total Thickness: 10 mm
Pile Weight: 1200 g/m²
Castor Chair Rating: BS EN 985 Pass
Body Voltage Test: BS ISO 6356:2000 <2kV
Colour Fastness To Light: Minimum grade 6
Flammability: Euroclass Bfl-s1



5500 luxury

5500 is an extremely durable fibre bonded carpet sheet, ideally suited for public buildings, such as schools, and other commercial interiors. Made from a high performance mix of solution dyed fibres, it is available in a choice of 18 attractive colourways.

velour excel

velour excel is an extremely durable fibre bonded carpet tile, ideally suited for public buildings, such as schools, and other commercial interiors. Made from a high performance mix of solution dyed fibres, it is available in a choice of 18 attractive colourways.



18701 graphite



18702 graphite stripe



18704 sterling



18705 sterling stripe



18707 cobalt



18708 cobalt stripe



Specification

Product Description: Performance Barrier System
Pile Yarn Description: 100% Solution Dyed Nylon (Polyamide-PA)
Tile Dimensions: 50 cm x 50 cm
Total Thickness: 10.0 mm
Pile Weight: 920 g/m²
Tufts per m2: 110,236/m²
Castor Chair Rating: BS EN 985 Pass
Body Voltage Test: BS ISO 6356:2000 <2kV
Colour Fastness To Light: Minimum grade 6
Flammability: Euroclass Bfl-s1

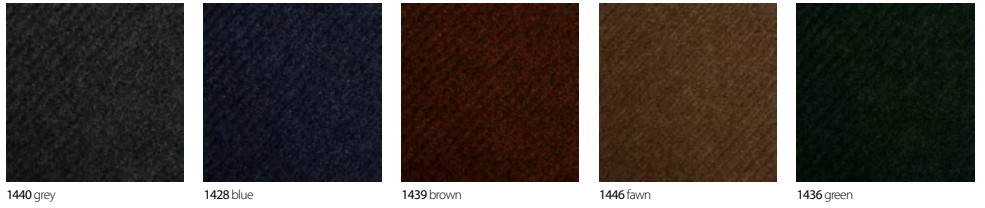


armour

armour uses the latest yarn technology to maximise moisture absorption, actively scrape away dirt, and provide heavy duty performance. This enables **armour** to remove up to 90% of the dirt and moisture tracked into a building, making it the ideal choice for entrance areas, lobbies, lifts and staircases. Use **armour** to make the right first impression, and to protect your interior flooring finishes.

eco₂matters®

armour is made from 100% **Econyl®** regenerated solution dyed nylon yarn and our unique **BioBase®** recycled backing.

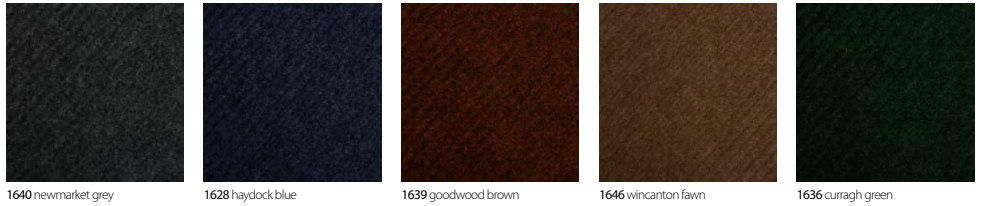


Specification

Product Description: Fibre Bonded
Pile Yarn Description: 100% Polypropylene
Roll Length: 30m
Roll Width: 2m
Total Thickness: 10.0 mm +/-10%
Total Weight: 1490 g/m² +/-10%
Colour Fastness To Light: Minimum grade 6
Flammability: Euroclass Efl-s1

7700 grimebuster

7700 grimebuster is a heavy contract ribbed fibre bonded carpet. It is ideal for withstanding heavy footfall environments and creating an effective dirt barrier for busy entrances, which lead directly from outside environments.



Specification

Product Description: Fibre Bonded
Pile Yarn Description: 100% Polypropylene
Tile Dimensions: 50 cm x 50 cm
Total Thickness: 12.0 mm
Pile Weight: 1170 g/m²
Total Weight: 4300 g/m²
Colour Fastness To Light: Minimum grade 6
Flammability: Euroclass Bfl-s1

grimebuster 50

grimebuster 50 is a heavy contract fibre bonded carpet tile with a deep diagonal rib surface.

It is ideal for withstanding heavy footfall environments and creating an effective dirt barrier for busy entrances, which lead directly from outside environments.





withstands
heavy traffic



protects



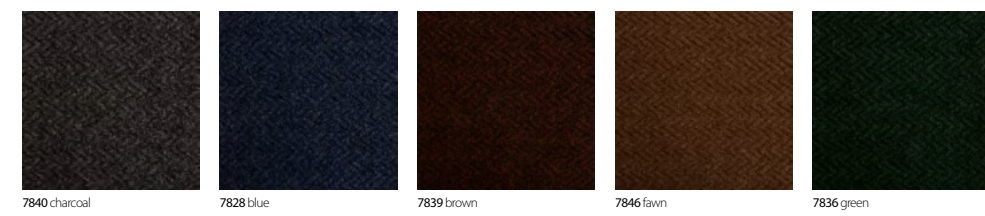
withstands
heavy traffic



protects



BioBase®
backing

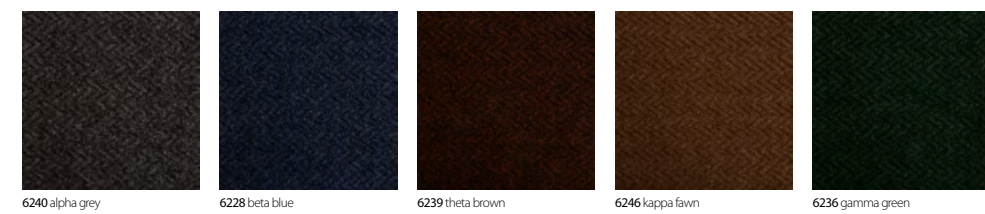


Specification

Product Description: Fibre Bonded
Pile Yarn Description: 100% Polypropylene
Roll Length: 30m
Roll Width: 2m
Total Thickness: 10.0 mm +/-10%
Total Weight: 1490 g/m² +/-10%
Colour Fastness To Light: Minimum grade 6
Flammability: Euroclass EF-s1

7800 chevrolay

7700 chevrolay is a heavy contract chevron ribbed fibre bonded carpet. It is ideal for withstanding heavy footfall environments and creating an effective dirt barrier for busy entrances, which lead directly from outside environments.



Specification

Product Description: Fibre Bonded
Pile Yarn Description: 100% Polypropylene
Tile Dimensions: 50 cm x 50 cm
Total Thickness: 12.0 mm
Pile Weight: 1490 g/m²
Total Weight: 4300 g/m²
Colour Fastness To Light: Minimum grade 6
Flammability: Euroclass BF-s1

chevrolay 50

chevrolay 50 is a heavy contract chevron ribbed fibre bonded tile with deep chevron design.

It is ideal for withstanding heavy footfall environments and creating an effective dirt barrier for busy entrances, which lead directly from outside environments.

characteristics of the products

Name	Dimensions Rolls (R) / Tiles (T)	Product Type	Pile Description	Carpet Pile Weight g/m²	Tile Total Weight g/m²	Carpet Pile Height mm	Tile Total Thickness mm	Number of tufts x/m²	Backing	Flammability EN13501	Impact Noise	Number of SKUs	Suitable for Underfloor Heating	Body Voltage kV	Wear Classification	Colour Fastness to Light BS EN ISO 105	Slip Resistant	Castor Chair EN985
osaka®	T 50cm × 50cm	Multilevel Loop	100% Nylon 6 carbon negative recycled yarn	695	4100	5	7.5	226,771	BioBase™	Bfl-S1	22 dB	12	Yes below 27°	<2.0	Class 33	>6	NPD	Pass
arctic®	T 50cm × 50cm P 25 cm x 100 cm	Multilevel Loop	100% Nylon 6 carbon negative recycled yarn	624	4024	4.5	7	226,771	BioBase™	Bfl-S1	26 dB	12	Yes below 27°	<2.0	Class 33	>6	NPD	Pass
vibe®	T 50cm × 50cm	Multilevel Loop	100% Nylon 6 (PA)	774	4180	5	7.5	250,393	BioBase™	Bfl-S1	25 dB	12	Yes below 27°	<2.0	Class 33	>6	NPD	Pass
dapple®	T 50cm × 50cm	Multilevel Loop	100% Nylon 6 (PA)	678	4100	5.2	7	236,220	BioBase™	Bfl-S1	24 dB	12	Yes below 27°	<2.0	Class 33	>6	NPD	Pass
tiltnturn®	T 50cm × 50cm	Multilevel Loop	100% Nylon 6 (PA)	770	4200	5	7.5	259,842	BioBase™	Bfl-S1	25 dB	12	Yes below 27°	<2.0	Class 33	>6	NPD	Pass
balance grade®	T 50cm × 50cm	Multilevel Loop	100% Nylon 6 (PA)	628	4028	4.5	7	226,771	BioBase™	Bfl-S1	23 dB	12	Yes below 27°	<2.0	Class 33	>6	NPD	Pass
balance grid®	T 50cm × 50cm	Multilevel Loop	100% Nylon 6 (PA)	628	4028	4.5	7	226,771	BioBase™	Bfl-S1	23 dB	12	Yes below 27°	<2.0	Class 33	>6	NPD	Pass
balance ground®	T 50cm × 50cm	Multilevel Loop	100% Nylon 6 (PA)	628	4028	4.5	7	226,771	BioBase™	Bfl-S1	23 dB	12	Yes below 27°	<2.0	Class 33	>6	NPD	Pass
alaska®	T 50cm × 50cm	Multilevel Loop	100% Econyl Nylon	800	4200	5	7.5	226,771	BioBase™	Bfl-S1	22 dB	12	Yes below 27°	<2.0	Class 33	>6	NPD	Pass
rainfall®	T 50cm × 50cm	Multilevel Loop	100% Econyl Nylon	910	4300	5	7.5	236,220	BioBase™	Bfl-S1	24 dB	12	Yes below 27°	<2.0	Class 33	>6	NPD	Pass
infinity®	T 50cm × 50cm	Level Loop	100% Econyl Nylon	550	4000	4.3	6.8	177,165	BioBase™	Bfl-S1	23 dB	16	Yes below 27°	<2.0	Class 33	>6	NPD	Pass
go to®	T 50cm × 50cm	Level Loop	EqoCycle® 75 recycled solution dyed nylon	500	3810	3.0	5.5	196,850	BioBase™	Bfl-S1	20 dB	20	Yes below 27°	<2.0	Class 33	>6	NPD	Pass
tivoli®	T 50cm × 50cm P 25 cm x 100 cm	Level Loop	100% Nylon(PA)	600	4050	4	6.5	196,500	BioBase™	Bfl-S1	23 dB	38	Yes below 27°	<2.0	Class 33	>6	NPD	Pass
tivoli mist®	T 50cm × 50cm P 25 cm x 100 cm	Level Loop	100% Nylon(PA)	600	4050	4	6.5	196,500	BioBase™	Bfl-S1	23 dB	38	Yes below 27°	<2.0	Class 33	>6	NPD	Pass
lateral®	T 50cm × 50cm	Structure Bonded	85%PP 15%PA	950	4200	5.5*	7.8	-	BioBase™	Bfl-S1	18 dB	18	Yes below 27°	<2.0	HC	>6	NPD	Pass
code	T 50cm × 50cm	Structure Bonded	85%PP 15%PA	1000	4250	5.5*	8	-	BioBase™	Bfl-S1	17 dB	11	Yes below 27°	<2.0	HC	>6	NPD	Pass
origin®	T 50cm × 50cm	Cut Pile	100% Econyl Nylon	1300	4550	7	9.5	165,354	BioBase™	Bfl-S1	28 dB	10	Yes below 27°	<2.0	Class 33	>6	NPD	Pass
4200 sidewalk	R 2m × 30m	Fibre Bonded Sheet	85%PP 15%PA	950	950	6		-	Uniform	Bfl-S1	18 dB	32	Yes below 27°	<2.0	HC	>6	NPD	Pass
4200 sidewalkFR	R 2m × 30m	Fibre Bonded Sheet	85%PP 15%PA	950	950	6		-	Uniform	Bfl-S1	18 dB	32	Yes below 27°	<2.0	HC	>6	NPD	Pass
cordiale	T 50cm × 50cm	Fibre Bonded Tile	85%PP 15%PA	950	4200	6	7.8	-	BioBase™	Bfl-S1	18 dB	32	Yes below 27°	<2.0	HC	>6	NPD	Pass
4400 broadway	R 2m × 30m	Fibre Bonded Sheet	85%PP 15%PA	940	940	6.5		-	Uniform	Bfl-S1	19 dB	32	Yes below 27°	<2.0	HC	>6	NPD	Pass
4400 broadwayFR	R 2m × 30m	Fibre Bonded Sheet	85%PP 15%PA	940	940	6.5		-	Uniform	Bfl-S1	19 dB	32	Yes below 27°	<2.0	HC	>6	NPD	Pass
academy®	T 50cm × 50cm	Fibre Bonded Tile	85%PP 15%PA	975	4200	6.5	7.8	-	BioBase™	Bfl-S1	21 dB	32	Yes below 27°	<2.0	HC	>6	NPD	Pass
5500 luxury	R 2m × 30m	Fibre Bonded Sheet	85%PP 15%PA	1150	1150	6.5		-	Uniform	Dfl-S1	21 dB	18	Yes below 27°	<2.0	HC	>6	NPD	Pass
velour excel	T 50cm × 50cm	Fibre Bonded Tile	85%PP 15%PA	1200	4900	8	10	-	BioBase™	Bfl-S1	21 dB	18	Yes below 27°	<2.0	HC	>6	NPD	Pass

entrance matting

Name	Dimensions Rolls (R) / Tiles (T)	Product Type	Pile Description	Carpet Pile Weight g/m²	Total Weight g/m²	Thickness mm	Backing	Flammability EN13501	Number of SKUs	Wear Classification	Colour Fastness to Light BS EN ISO 105	Slip Resistant
armour	T 50cm × 50cm	Cut Pile	100%PA	920	4500	10	BioBase™	Bfl-S1	6	Class 33	>6	DS
7700 grimebuster	R 2m × 30m	Fibre Bonded Sheet	100% PP		1490	10	Uniform	Efl-S1	5	HC	>6	NPD
grimebuster 50	T 50cm × 50cm	Fibre Bonded Tile	100% PP	1490	4300	12	BioBase™	Bfl-S1	5	HC	>6	NPD
7800 chevrolay	R 2m × 30m	Fibre Bonded Sheet	100% PP		1490	10	Uniform	Efl-S1	5	HC	>6	NPD
chevrolay 50	T 50cm × 50cm	Fibre Bonded Tile	100% PP	1490	4300	12	BioBase™	Bfl-S1	5	HC	>6	NPD

Appendix

7	arctic	39	lateral
9	vibe	41	code
11	dapple	43	origin
13	tiltnturn	45	4200 sidewalk
15	balance grade	45	cordiale
17	balance grid	47	4400 broadway
19	balance ground	47	academy
21	rainfall	49	5500 luxury
23	osaka	49	velour excel
25	alaska	51	armour
27	infinity	53	7700 grimebuster
29	go to	53	grimebuster 50
31	tivoli mist	55	7800 chevrolay
35	tivoli tile	55	chevrolay 50
37	tivoli plank		



Burmatex®

MANUFACTURERS OF CREATIVE FLOORING 

Head Office

Victoria Mills, The Green
Ossett
West Yorkshire
WF5 0AN
United Kingdom

Tel: +44 (0) 1924 262525
Fax: +44 (0) 1924 280033
Email: projects@burmatex.co.uk
Web: www.burmatex.co.uk

International Enquires

international@burmatex.co.uk

Eastern Europe Office

Burmatex
Andersia Business Centre
Plac Andersa 7
61-894 Poznań, Poland

Tel: + 48 61 668 3883
Mob: + 48 603 548 074
Mob: + 48 696 057 065
email: biuro@burmatex.pl

Plank installation methods

Monolithic



Half Drop



Random Drop



Herringbone



Tile installation methods

Quarter Turn



Monolithic



Random



Brick



Half Drop



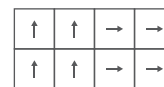
Alternate rows
rotated 180°



Alternate tiles
rotated 180°



Large Quarter Turn



Parquet

