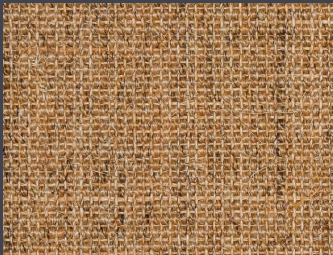




9421-020



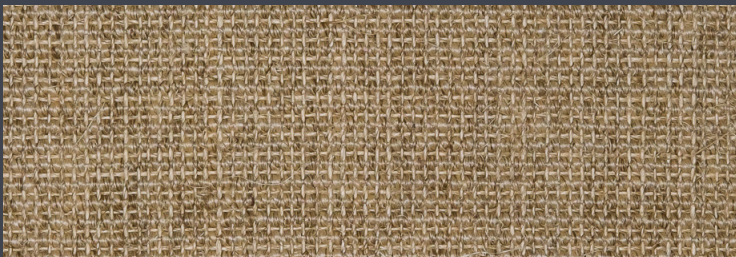
9421-520



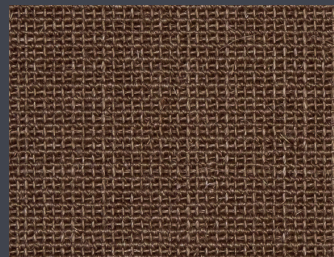
9421-080*



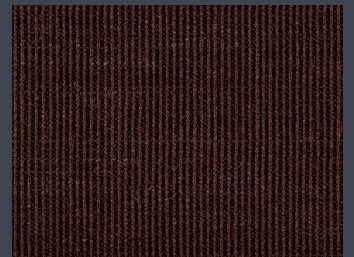
9421-510



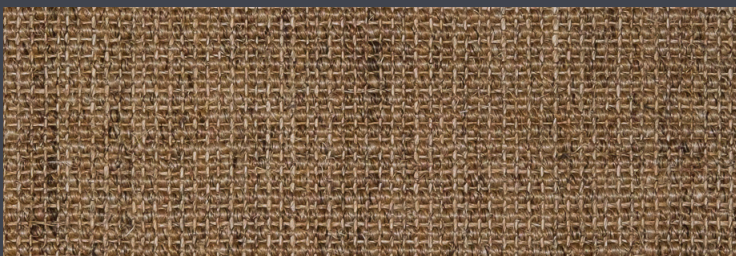
9421-070*



9421-570



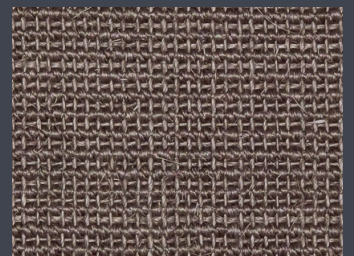
9421-580



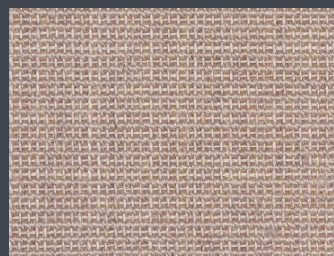
9421-090*



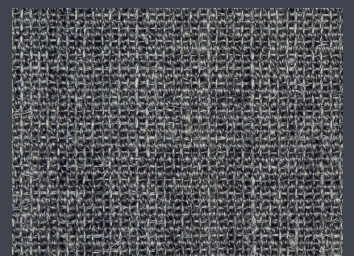
9421-620



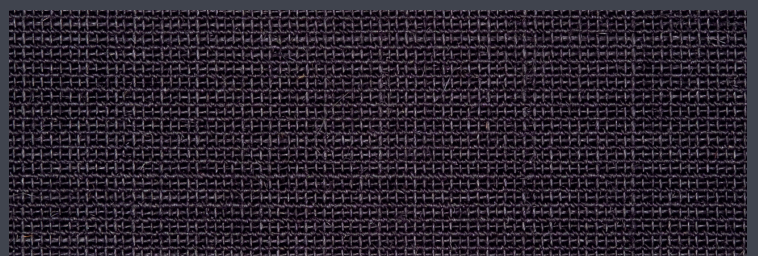
9421-630



9421-610

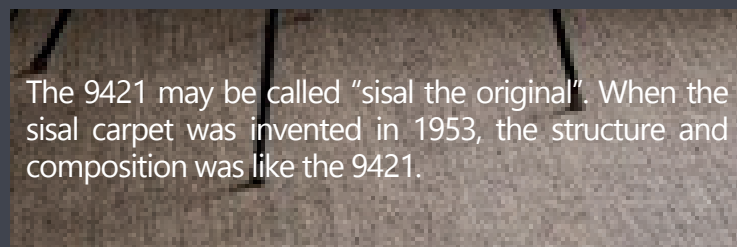


9421-615



9421-650

Scan QR-code to request 9421 A5-samples



TECHNISCHE SPECIFICATIES

Fabricagemethode	geweven
Poolmateriaal	100% sisal
Rug	latex
Breedte	400 / 500 cm*
Dikte totaal	6 mm
Poolgewicht	1350 g/m ²
Massa totaal	1850 g/m ²
Kleuren	13

* kleur 070, 080 en 090 zijn beschikbaar in 400 en 500 cm breed

TECHNISCHE DATEN

Herstellungsverfahren	gewebt
Material Pol	100% sisal
Rücken	latex
Breite	400 / 500 cm*
Gesamtdicke	6 mm
Pohlgewicht	1350 g/m ²
Gesamtes Gewicht	1850 g/m ²
Anzahl Farben	13

* Farben 070, 080 und 090 sind in den Breiten 400 und 500 cm erhältlich

TECHNICAL SPECIFICATIONS

Type of manufacture	Woven
Pile material	100% Sisal
Back	Latex
Width	400 / 500* cm
Total thickness	6 mm
Pile weight	1350 g/m ²
Total weight	1850 g/m ²
Number of colours	13

* color 070, 080 and 090 are available in 400 and 500 cm width

SYMBOLS

