



**academy<sup>®</sup>**

---

**low carbon carpet tiles**

February 2024

## extremely durable fine ribbed carpet



Made from solution dyed fibres including 5% recycled polyester and our unique **BioBase®** recycled backing, **academy®** is low carbon.

---

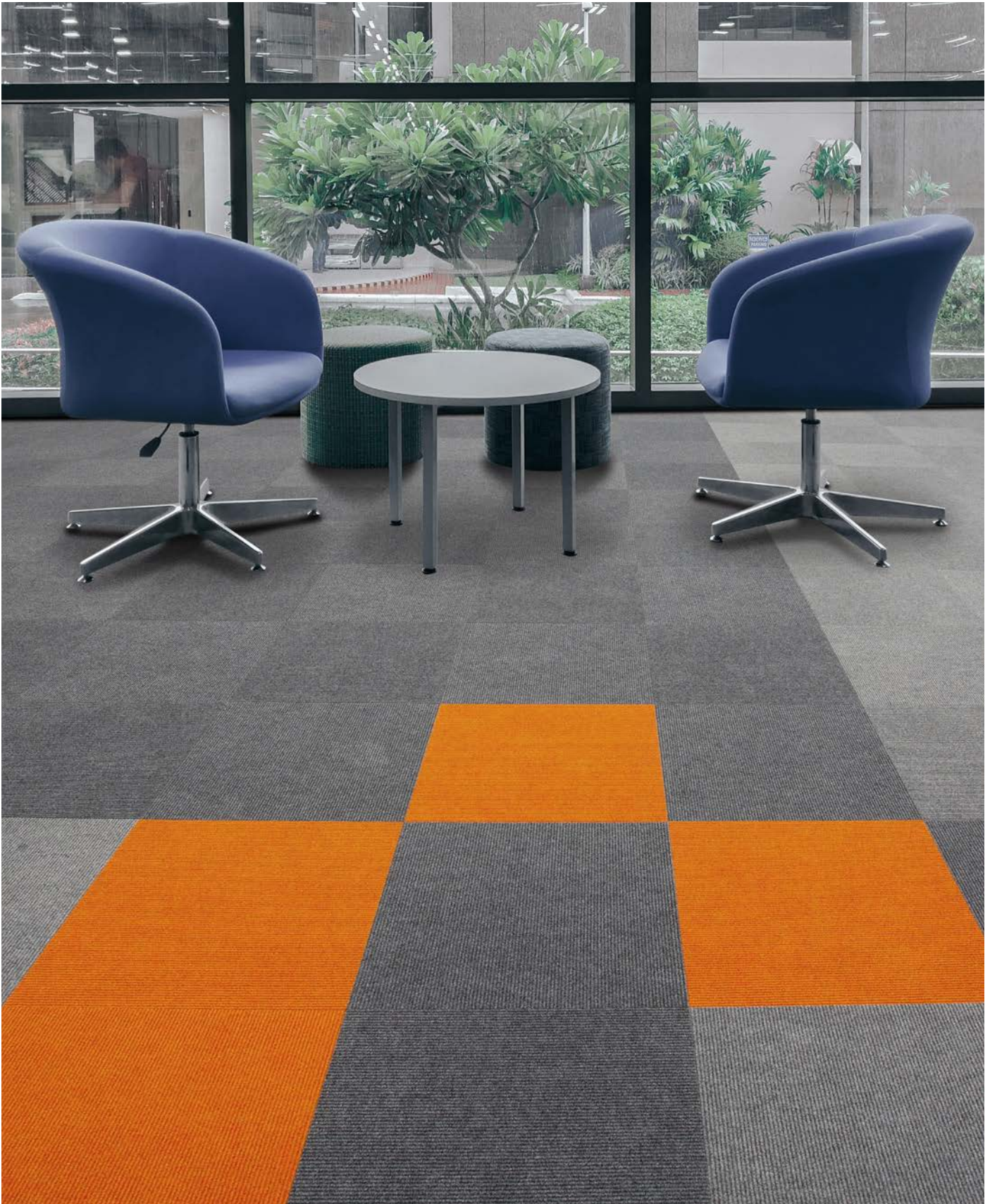
**academy®** is an extremely durable fine ribbed carpet, available in tile or sheet making it easy to maintain, and features anti-fray/anti-ravel technology.

---

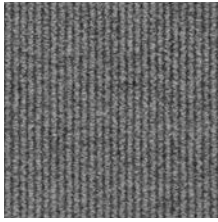
The palette of 24 colours is an ideal choice for use in schools, colleges and universities, perfect for heavy footfall environments.



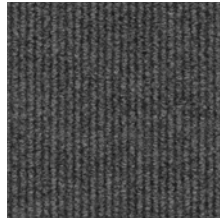
for use in schools and colleges



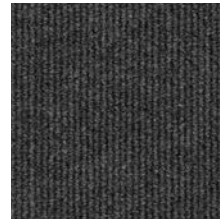
# academy® colour palette



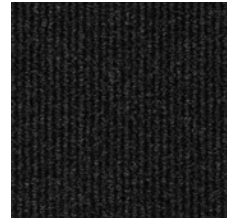
**diamond grey**  
LRV: Y 10.38



**grey cloud**  
LRV: Y 5.25



**charcoal grey**  
LRV: Y 3.45



**ebony slate**  
LRV: Y 2.03



**storm grey**  
LRV: Y 8.99



**denim blue**  
LRV: Y 7.14



**ink blue**  
LRV: Y 2.71



**midnight sky**  
LRV: Y 2.27



**horizon blue**  
LRV: Y 7.61



**atlantis blue**  
LRV: Y 3.99



**sapphire blue**  
LRV: Y 3.44



**turquoise blue**  
LRV: Y 4.92



**honey beige**  
LRV: Y 11.83



**sandy beige**  
LRV: Y 7.48



**earth brown**  
LRV: Y 4.51



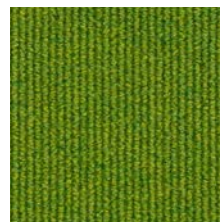
**sage green**  
LRV: Y 8.16



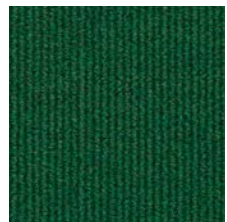
**saffron yellow**  
LRV: Y 21.24



**tangerine orange**  
LRV: Y 14.14



**lime green**  
LRV: Y 9.42



**emerald green**  
LRV: Y 4.87



**lilac iris**  
LRV: Y 6.16



**dark violet**  
LRV: Y 2.78

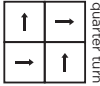


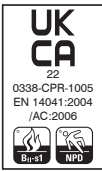
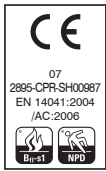
**purple orchid**  
LRV: Y 3.72



**cherry red**  
LRV: Y 2.93

# technical specifications

	tiles		sheet
Fibre Composition	80% Polypropylene 15% Nylon 5% Recycled Polyester	 quarter turn	80% Polypropylene 15% Nylon 5% Recycled Polyester
Dimensions	50cm x 50cm		30m x 2m
Pile Weight	950g/m <sup>2</sup>		950g/m <sup>2</sup>
Total Weight	4200g/m <sup>2</sup>		6mm
Total Thickness	7.8mm		
Backing	<b>BioBase® recycled</b> backing (recycled BS EN ISO 14021)		
Wear Classification	Heavy Contract		Heavy Contract
Castor Chair Rating	Pass - continuous use (BS EN 985)		Pass - continuous use (BS EN 985)
Flammability	Euroclass Bfl-s1		Euroclass Bfl-s1
Static Loading	BS 4939: 1987 (2003) Recovery >80% (24hrs)		BS 4939: 1987 (2003) Recovery >80% (24hrs)
Reduction in Impact Noise	BS EN ISO 10140-3:2010 18dB		BS EN ISO 10140-3:2010 18dB
Warranty	15 years		15 years
Number of Tiles per Box	20 (5m <sup>2</sup> )		



## eco<sub>2</sub>matters®

We are committed to helping deliver a sustainable future, because we believe that what we do **matters**. To help us deliver on this commitment, we have developed **eco<sub>2</sub>matters**®, our sustainability principles, supported by independent 3rd party verification.



**Journey to Net Zero & Beyond**



**Positive Environmental Impact**



**Social Values & Well Being**

Made from solution dyed fibres including 5% recycled polyester and our unique **BioBase®** recycled backing, **academy®** is **low carbon**. The extremely durable broad ribbed carpet, available in tile or sheet making it easy to maintain, and features **anti-fray** and **anti-ravel** technology. The palette of 24 colours is an ideal choice for use in schools, colleges and universities, perfect for heavy footfall environments.



**low carbon**

**academy®** is **low carbon**



**take back service**

**Burmatex® reco<sub>2</sub>very** take back service provides a no landfill solution for your used tiles



**anti fray anti ravel**

**academy®** features **anti-fray/anti-ravel** technology



**100% certified renewable**

**Burmatex®** products are made using 100% certified **renewable** electricity



**BioBase® backing**

**academy®** tiles use **BioBase® recycled** backing



**independently 3rd party verified**

**eco<sub>2</sub>matters®** declarations are independently 3rd party verified

### EPD

**Burmatex®** products are supported by 3rd party independently verified, product specific EPD's

### LEED

**Burmatex®** products contribute towards Leed accreditation

### SKA

**Burmatex®** products adhere to SKA standards

### WELL Building Standards

**Burmatex®** products contribute to WELL Building Standards



### need a BIM object?

all our products have BIM objects available on our website

For more information about  
**academy<sup>®</sup> low carbon** carpet tiles  
Visit [www.burmatex.co.uk/academy](http://www.burmatex.co.uk/academy)

Need **advice**? Help with the **design**?  
Call your Business Area Manager

**Need a go to shadecard or samples?**



Scan the QR code  
Call +44 (0) 1924 262525  
Email [samples@burmatex.co.uk](mailto:samples@burmatex.co.uk)

# Burmatex<sup>®</sup>

MANUFACTURERS OF CREATIVE FLOORING 

---

KEEP IN TOUCH



---

Burmatex Ltd  
Victoria Mills, The Green,  
Ossett, West Yorkshire  
WF5 0AN