

EXPERIENCE CARPET TILES

paragón
CARPET TILES





paragón
CARPET TILES

Cresta - Castle Black, 9778N

PARAGON CARPET TILES

Paragon Carpet Tiles is part of National Floorcoverings, a group that is committed to UK manufacturing and producing quality products for its customers.

The Group has expertise in all areas of flooring, from manufacturing entrance matting, fibre bonded carpets, tufted carpet and tiles to specialised indoor and outdoor sports surfaces.

CONTENTS

DESIGN LOOP

Inspiration - Cresta	6
Inspiration - Mesh	10
Inspiration - Greda	14
Inspiration - Phase	18
Vapour	22
Total Contrast	26
Strobe	28
Workspace Linear	30
Codec	32

LOOP PILE

Workspace Loop	36
Evolve	38
Diversity and Diversity Groove	40
Vital	44
Toccarre	46
Sirocco and Sirocco Stripe	48
Macaw and Macaw Stripe	52

CUT PILE

Maestro	58
Workspace Cut Pile	60

LUXURY COMMERCIAL VINYL

Rappórt	64
Duera	66

ENTRANCE MATTING

PRIMARY:

Frameworks	70
Treadloc 25	72
Entrack 50	76

SECONDARY:

Workspace Entrance	80
--------------------	----

EXPLORE PARAGON CARPET TILES

National Floorcoverings	83
Environment and Manufacturing	84
Cleaning and Maintenance Guide	90
Contact Details	92



Strobe - Spark, 2621

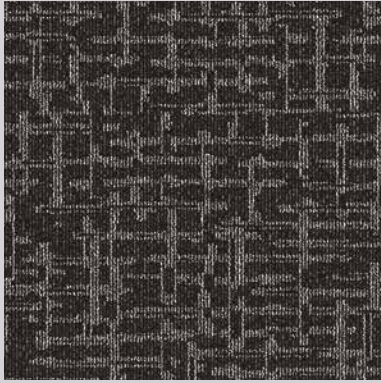
DESIGN LOOP

Inspiration - Cresta	6
Inspiration - Mesh	10
Inspiration - Greda	14
Inspiration - Phase	18
Vapour	22
Total Contrast	26
Strobe	28
Workspace Linear	30
Codec	32

A modern office desk with a light-colored wooden top and dark blue legs. A computer monitor, keyboard, and mouse are on the desk. A grey office chair is positioned to the left. The room features a large window with a grid pattern, a brick wall on the left, and a dark grey carpet with a subtle geometric pattern. A pink vertical bar is on the left side of the text.

INSPIRATION
CRESTA

Cresta - Castle Black, 9778N



Castle Black, 9778N
(LRV - 1.91)



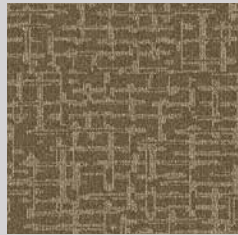
Silver Wolf, 8779N
(LRV - 3.94)



Bear Silver, 9749N
(LRV - 4.15)



Polar Trek, 1790N
(LRV - 18.94)



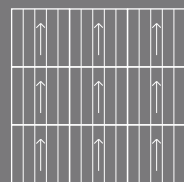
Lucent Grey, 1746N
(LRV - 7.63)



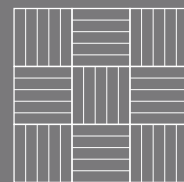
Glam Cyan, 6755N
(LRV - 3.60)

Style	Tufted 1/12" Gauge Loop Pile Tile
Yarn Construction	100% Solution Dyed Nylon
Pile Yarn Weight	750gsm
Pile Height	3mm - 5mm
Total Weight	4450gsm
Total Thickness	7mm ± 0.5mm
Backing	100% Envirobase - minimum of 75% recycled material
Additional Backing	Komfort Bac available on request
Tile Size	50cm x 50cm
Tiles Per Box	20 (5m ²)
Wear Classification	Heavy Contract Class 33
Luxury Class	LC1
Anti-static	Suitable for use with computers. Less than 2Kv
Colour Fastness	Light (BS EN ISO 105:B02) >5 Shampoo (BS 1006:UK-TB:1990) >4 Dry Rubbing (BS EN ISO 105:B01) >4 Wet Rubbing (BS EN ISO 105:X12) >4
Flammability	BS5287 Assessment and labelling of Textile Floorcovering tested to BS4790 (Hot Metal Nut Test) - Low Radius of Char
BS EN 13501	Class Bfl-s1
Impact Noise Reduction	23dB
Castor Chair Test	Suitable for intensive use with castor chairs
Warranty	10 years
VOC Content	E1 in relation to EN 14041:2004

TOTAL COLOURWAY OPTIONS - 6



BROADLOOM DESIGN



TESSELLATED DESIGN

AVAILABLE FROM STOCK



MADE IN BRITAIN

Tile colours representative in print, order a sample for true likeness.

INSPIRATION
CRESTA



Cresta - Polar Trek, 1790N

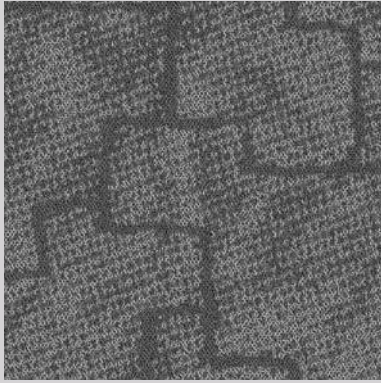


Cresta - Castle Black, 9778N



INSPIRATION
MESH

Mesh - Shadow Bone, 8778L



Obsidian Flash, 8775L
(LRV - 5.10)



Sonic Coal, 8773L
(LRV - 12.69)



Shadow Bone, 8778L
(LRV - 3.11)



Mild Sienna, 6755L
(LRV - 2.04)



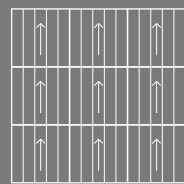
Satin Ash, 9748L
(LRV - 4.20)



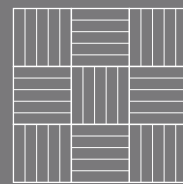
Burly Wood, 1745L
(LRV - 8.43)

Style	Tufted 1/12" Gauge Loop Pile Tile
Yarn Construction	100% Solution Dyed Nylon
Pile Yarn Weight	750gsm
Pile Height	2.5mm - 5.5mm
Total Weight	4450gsm
Total Thickness	7mm ± 0.5mm
Backing	100% Envirobase - minimum of 75% recycled material
Additional Backing	Komfort Bac available on request
Tile Size	50cm x 50cm
Tiles Per Box	20 (5m ²)
Wear Classification	Heavy Contract Class 33
Luxury Class	LC1
Anti-static	Suitable for use with computers. Less than 2Kv
Colour Fastness	Light (BS EN ISO 105:B02) >5 Shampoo (BS 1006:UK-TB:1990) >4 Dry Rubbing (BS EN ISO 105:B01) >4 Wet Rubbing (BS EN ISO 105:X12) >4
Flammability	BS5287 Assessment and labelling of Textile Floorcovering tested to BS4790 (Hot Metal Nut Test) - Low Radius of Char
BS EN 13501	Class Bfl-s1
Impact Noise Reduction	23dB
Castor Chair Test	Suitable for continuous use with castor chairs
Warranty	10 years
VOC Content	E1 in relation to EN 14041:2004

TOTAL COLOURWAY OPTIONS - 6



BROADLOOM DESIGN



TESSELLATED DESIGN

AVAILABLE FROM STOCK



MADE IN BRITAIN

Tile colours representative in print, order a sample for true likeness.

INSPIRATION
MESH



Mesh - Mild Sienna, 8755L

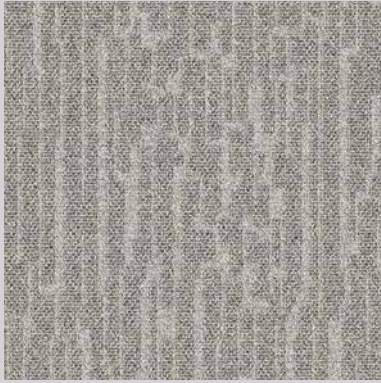


Mesh - Obsidian Flash, 8775L



INSPIRATION
GREDA

Greda - Cracked Station, 1763V



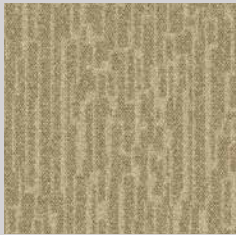
Livid Grey, 8773V
(LRV - 10.40)



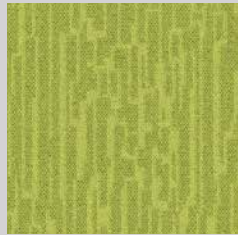
Ghost Machine, 8775V
(LRV - 4.19)



Electric Azure, 6755V
(LRV - 3.77)



Cracked Station, 1763V
(LRV - 12.20)



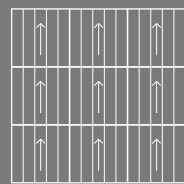
Lime Spring, 5761V
(LRV - 24.37)



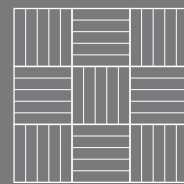
Moccasin, 3730V
(LRV - 10.37)

Style	Tufted 1/12" Gauge Loop Pile Tile
Yarn Construction	100% Solution Dyed Nylon
Pile Yarn Weight	750gsm
Pile Height	3mm - 6.5mm
Total Weight	4450gsm
Total Thickness	8mm ± 0.5mm
Backing	100% Envirobase - minimum of 75% recycled material
Additional Backing	Komfort Bac available on request
Tile Size	50cm x 50cm
Tiles Per Box	20 (5m ²)
Wear Classification	Heavy Contract Class 33
Luxury Class	LC1
Anti-static	Suitable for use with computers. Less than 2Kv
Colour Fastness	Light (BS EN ISO 105:B02) >5 Shampoo (BS 1006:UK-TB:1990) >4 Dry Rubbing (BS EN ISO 105:B01) >4 Wet Rubbing (BS EN ISO 105:X12) >4
Flammability	BS5287 Assessment and labelling of Textile Floorcovering tested to BS4790 (Hot Metal Nut Test) - Low Radius of Char
BS EN 13501	Class Bfl-s1
Impact Noise Reduction	23dB
Castor Chair Test	Suitable for intensive use with castor chairs
Warranty	10 years
VOC Content	E1 in relation to EN 14041:2004

TOTAL COLOURWAY OPTIONS - 6



BROADLOOM
DESIGN



TESSELLATED
DESIGN

AVAILABLE
FROM STOCK



MADE IN
BRITAIN

Tile colours representative in print, order a sample for true likeness.

INSPIRATION
GREDA



Greda - Crackled Station, 1763V

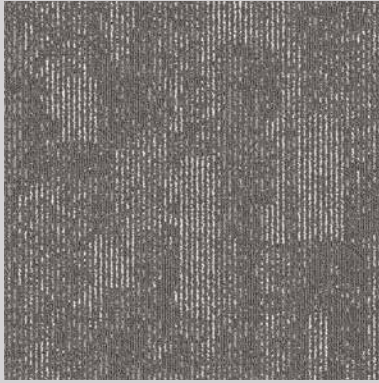


Greda - Ghost Machine, 8775V



INSPIRATION
PHASE

Phase - Dodger Blue, 6657B



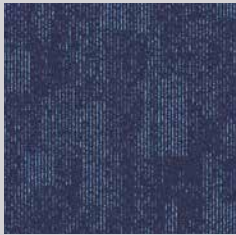
Gainsboro, 8675B
(LRV - 6.13)



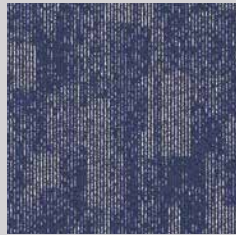
Virtual Ebony, 8677B
(LRV - 2.87)



Charged Metal, 1648B
(LRV - 2.69)



Dodger Blue, 6657B
(LRV - 2.78)



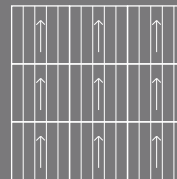
Cloud Indigo, 6658B
(LRV - 5.07)



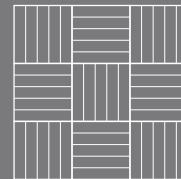
Navajo Brown, 3627B
(LRV - 3.24)

Style	Tufted 1/12" Gauge Loop Pile Tile
Yarn Construction	100% Solution Dyed Nylon
Pile Yarn Weight	610gsm
Pile Height	2.5mm - 5.5mm
Total Weight	4310gsm
Total Thickness	7mm ± 0.5mm
Backing	100% Envirobase - minimum of 75% recycled material
Additional Backing	Komfort Bac available on request
Tile Size	50cm x 50cm
Tiles Per Box	20 (5m ²)
Wear Classification	Heavy Contract Class 33
Luxury Class	LC1
Anti-static	Suitable for use with computers. Less than 2Kv
Colour Fastness	Light (BS EN ISO 105:B02) >5 Shampoo (BS 1006:UK-TB:1990) >4 Dry Rubbing (BS EN ISO 105:B01) >4 Wet Rubbing (BS EN ISO 105:X12) >4
Flammability	BS5287 Assessment and labelling of Textile Floorcovering tested to BS4790 (Hot Metal Nut Test) - Low Radius of Char
BS EN 13501	Class Bfl-s1
Impact Noise Reduction	23dB
Castor Chair Test	Suitable for intensive use with castor chairs
Warranty	10 years
VOC Content	E1 in relation to EN 14041:2004

TOTAL COLOURWAY OPTIONS - 6



BROADLOOM
DESIGN



TESSELLATED
DESIGN

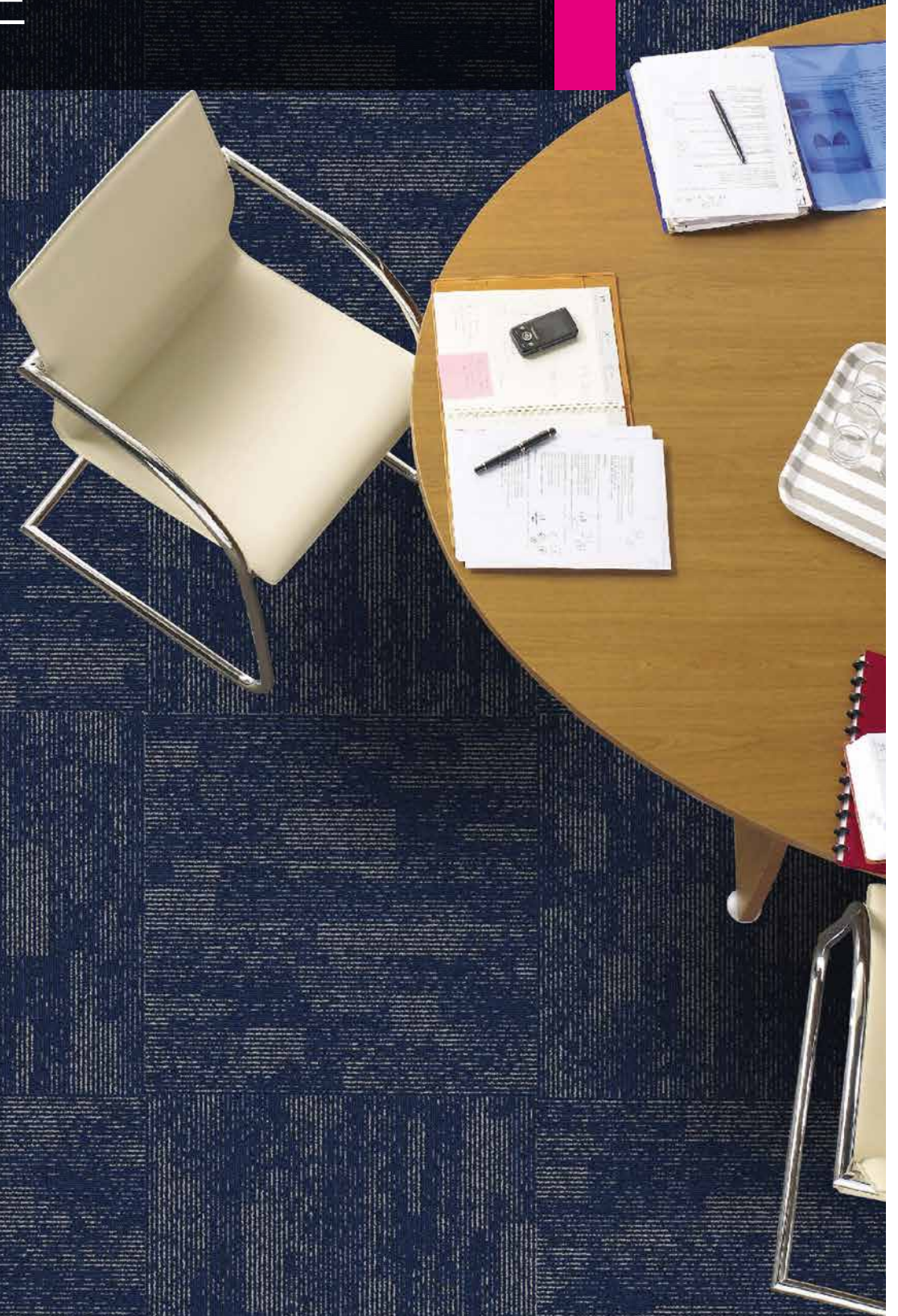
AVAILABLE
FROM STOCK



MADE IN
BRITAIN

Tile colours representative in print, order a sample for true likeness.

INSPIRATION
PHASE



Phase - Cloud Indigo, 6658B



Phase - Navajo Brown, 3627B



VAPOUR

Vapour - Alchemy, 54568



Thermos, 82146
(LRV - 3.70)



Alchemy, 54568
(LRV - 10.74)



Wisp, 81434
(LRV - 5.94)



Distill, 84559
(LRV - 15.04)



Neboa, 74559
(LRV - 5.94)



Nitro, 63846
(LRV - 4.45)



Electron, 63888
(LRV - 7.55)



Haze, 63244
(LRV - 4.48)



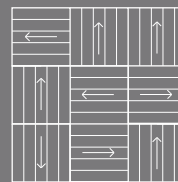
Purify, 81111
(LRV - 7.52)



Brume, 18382
(LRV - 13.13)

Style	Tufted 1/12" Gauge Loop Pile Tile
Yarn Construction	100% Solution Dyed Nylon 6
Pile Yarn Weight	650gsm
Pile Height	2.5mm ± 0.5mm
Total Weight	3800gsm
Total Thickness	6mm ± 0.5mm
Backing	100% Envirobase - minimum of 75% recycled material
Tile Size	50cm x 50cm
Tiles Per Box	20 (5m ²)
Wear Classification	Heavy Contract Class 33
Luxury Class	LC1
Anti-static	Suitable for use with computers. Less than 2Kv
Colour Fastness	Light (BS EN ISO 105:B02) >6 Shampoo (BS 1006:UK-TB:1990) 4-5 Dry Rubbing (BS EN ISO 105:B01) 4-5 Wet Rubbing (BS EN ISO 105:X12) 4-5
Flammability	BS5287 Assessment and labelling of Textile Floorcovering tested to BS4790 (Hot Metal Nut Test) - Low Radius of Char
BS EN 13501	Class Bfl-s1
Impact Noise Reduction	25dB
Castor Chair Test	Suitable for intensive use with castor chairs
Warranty	10 years
VOC Content	E1 in relation to EN 14041:2004
Environmental Status	BREEAM® A Rated

TOTAL COLOURWAY OPTIONS - 10



RANDOM LAY
DESIGN

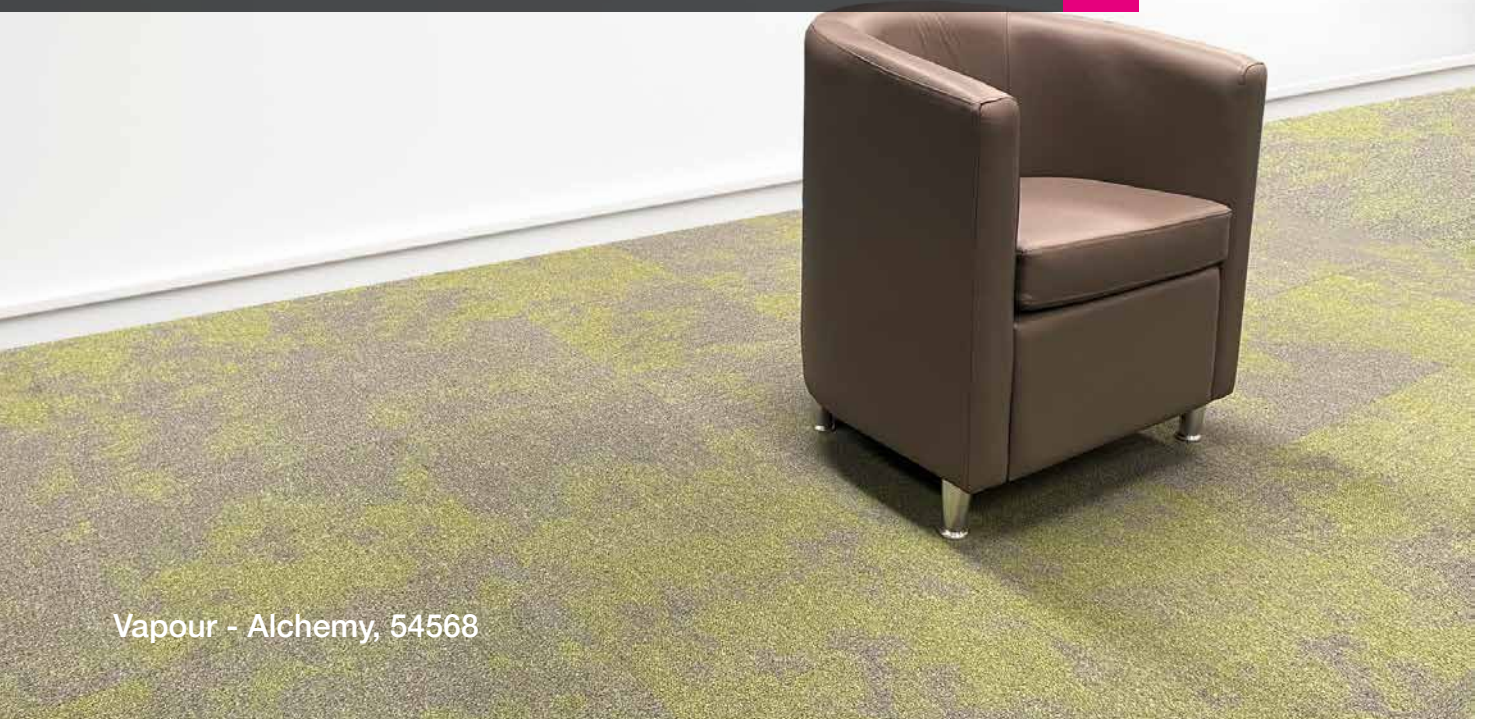
AVAILABLE
FROM STOCK



MADE IN
BRITAIN

Tile colours representative in print, order a sample for true likeness.

VAPOUR



Vapour - Alchemy, 54568



Vapour - Distill, 84559



Vapour - Distill, 84559



TOTAL CONTRAST

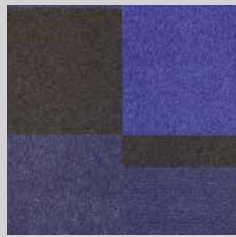
Total Contrast - Palladium Sky, 91826



Palladium Sky, 91826
(LRV - 3.74)



Chrome Pelt, 83126
(LRV - 8.51)



Ocean Rocks, 64518
(LRV - 3.01)



Black Leaf, 52926
(LRV - 11.81)



Cracked Sapling, 10001
(LRV - 14.99)



Mellow Bark, 10203
(LRV - 11.69)

Colourways show 1sqm for pattern effect

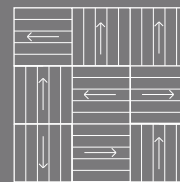
Style	Tufted 1/10" Gauge Loop Pile Tile
Yarn Construction	100% Solution Dyed ECONYL ® manufactured from recycled fishing nets
Pile Yarn Weight	600gsm
Pile Height	3mm
Total Weight	4390gsm
Total Thickness	6mm
Backing	100% Envirobase - minimum of 75% recycled material
Additional Backing	Komfort Bac available on request
Tile Size	50cm x 50cm
Tiles Per Box	20 (5m ²)
Wear Classification	Heavy Contract Class 33
Luxury Class	LC1
Anti-static	Suitable for use with computers. Less than 2Kv
Colour Fastness	Light (BS EN ISO 105:B02) >6 Shampoo (BS 1006:UK-TB:1990) 4-5 Dry Rubbing (BS EN ISO 105:B01) 4-5 Wet Rubbing (BS EN ISO 105:X12) 4-5
Flammability	BS5287 Assessment and labelling of Textile Floorcovering tested to BS4790 (Hot Metal Nut Test) - Low Radius of Char
BS EN 13501	Class Bfl-s1
Impact Noise Reduction	26dB
Castor Chair Test	Suitable for intensive use with castor chairs
Warranty	10 years
VOC Content	E1 in relation to EN 14041:2004
Environmental Status	BREEAM® A Rated



The ECONYL® Regeneration System recovers waste (fishing nets) which would otherwise end up in landfill or the ocean, causing serious damage to the ecosystem. The unique process that allows Aquafil to produce 100% regenerated Nylon yarn using waste material instead of fossil raw material.

Compared to common Nylon 6, ECONYL® fiber reduces approximately 50% of the CO2 equivalent emissions per kg of yarn, providing real savings in terms of emissions.

TOTAL COLOURWAY OPTIONS - 6



RANDOM LAY
DESIGN

AVAILABLE
FROM STOCK



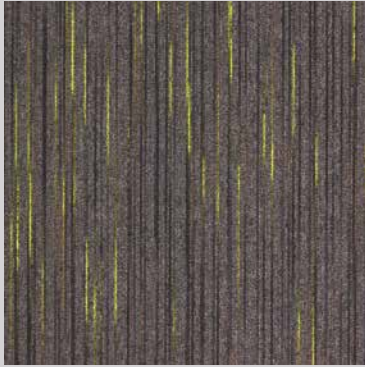
MADE IN
BRITAIN

Tile colours representative in print, order a sample for true likeness.



STROBE

Strobe - Spark, 2621



Flex, 2620
(LRV - 4.97)



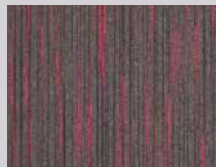
Blaze, 2604
(LRV - 4.24)



Ignite, 2603
(LRV - 6.09)



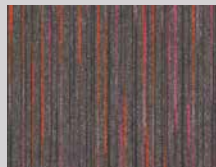
Extreme, 2606
(LRV - 5.11)



Spark, 2621
(LRV - 4.57)



Vivid, 4504
(LRV - 4.38)



Rapid, 2614
(LRV - 5.53)



Breeze, 4109
(LRV - 6.04)



Force, 2605
(LRV - 7.47)



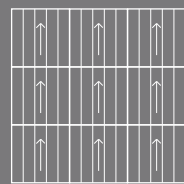
Plasma, 2619
(LRV - 4.39)



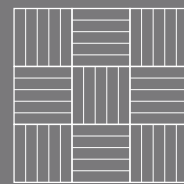
Grey Highlight Fusion, 8226
(LRV - 4.69)

Style	Tufted 1/10" Gauge Loop Pile Tile
Yarn Construction	100% Solution Dyed / Space Dyed Nylon
Pile Yarn Weight	610gsm
Pile Height	3mm
Total Weight	4400gsm
Total Thickness	6mm
Backing	100% Envirobase - minimum of 75% recycled material
Additional Backing	Komfort Bac available on request
Tile Size	50cm x 50cm
Tiles Per Box	20 (5m ²)
Wear Classification	Heavy Contract Class 33
Luxury Class	LC1
Anti-static	Suitable for use with computers. Less than 2Kv
Colour Fastness	Light (BS EN ISO 105:B02) >6 Shampoo (BS 1006:UK-TB:1990) 4-5 Dry Rubbing (BS EN ISO 105:B01) 4-5 Wet Rubbing (BS EN ISO 105:X12) 4-5
Flammability	BS5287 Assessment and labelling of Textile Floorcovering tested to BS4790 (Hot Metal Nut Test) - Low Radius of Char
BS EN 13501	Class Bfl-s1
Impact Noise Reduction	26dB
Castor Chair Test	Suitable for continuous use with castor chairs
Warranty	10 years
VOC Content	E1 in relation to EN 14041:2004
Environmental Status	BREEAM® A Rated

TOTAL COLOURWAY OPTIONS - 10+1



BROADLOOM
DESIGN



TESSELLATED
DESIGN

AVAILABLE
FROM STOCK



MADE IN
BRITAIN

Tile colours representative in print, order a sample for true likeness.



WORKSPACE LINEAR

Workspace Linear - Islington Tunnel, 5014



Islington Tunnel, 5014
(LRV - 5.54)



Nobu Grey, 7002
(LRV - 15.67)



Docklands Grey, 3013
(LRV - 9.01)



Apollo Blue, 5004
(LRV - 4.42)



Millennium Blue, 3001
(LRV - 8.18)



Regents Canal, 4018
(LRV - 5.12)



Victoria Blue, 5181
(LRV - 2.92)



Clockhouse Blue, 4009
(LRV - 3.72)



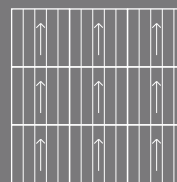
Westow Park Plum,
3016 (LRV - 7.50)



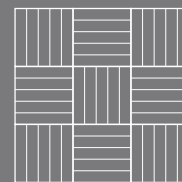
Broadway, 3012
(LRV - 8.17)

Style	Tufted 1/10" Gauge Loop Pile Tile
Yarn Construction	100% Solution Dyed / Space Dyed Nylon
Pile Yarn Weight	600gsm
Pile Height	3mm
Total Weight	4390gsm
Total Thickness	6mm
Backing	100% Envirobase - minimum of 75% recycled material
Additional Backing	Komfort Bac available on request
Tile Size	50cm x 50cm
Tiles Per Box	20 (5m ²)
Wear Classification	Heavy Contract Class 33
Luxury Class	LC1
Anti-static	Suitable for use with computers. Less than 2Kv
Colour Fastness	Light (BS EN ISO 105:B02) >6 Shampoo (BS 1006:UK-TB:1990) 4-5 Dry Rubbing (BS EN ISO 105:B01) 4-5 Wet Rubbing (BS EN ISO 105:X12) 4-5
Flammability	BS5287 Assessment and labelling of Textile Floorcovering tested to BS4790 (Hot Metal Nut Test) - Low Radius of Char
BS EN 13501	Class Bfl-s1
Impact Noise Reduction	26dB
Castor Chair Test	Suitable for intensive use with castor chairs
Warranty	10 years
VOC Content	E1 in relation to EN 14041:2004
Environmental Status	BREEAM® A Rated

TOTAL COLOURWAY OPTIONS - 10



BROADLOOM
DESIGN



TESSELLATED
DESIGN

AVAILABLE
FROM STOCK



MADE IN
BRITAIN

Tile colours representative in print, order a sample for true likeness.



CODEC

Codec - Axis, 8228181 Hex, 7248181 Binary, 9183181 & Digital, 6176181



Axis, 8181
(LRV - 4.00)



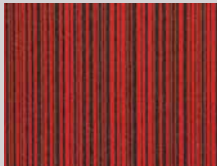
Axis Accent, 8228
(LRV - 5.78)



Binary, 9191
(LRV - 9.59)



Binary Accent, 9183
(LRV - 17.50)



Index, 2181
(LRV - 4.60)



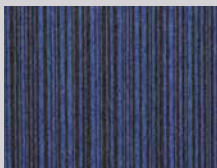
Index Accent, 2247
(LRV - 7.73)



Hex, 7181
(LRV - 4.77)



Hex Accent, 7248
(LRV - 7.22)



Digital, 6181
(LRV - 4.32)



Digital Accent, 6176
(LRV - 4.62)



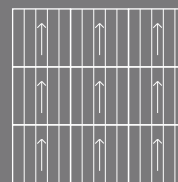
Pathway, 5151
(LRV - 11.59)



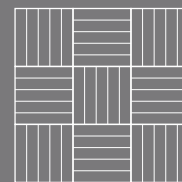
Pathway Accent, 5229
(LRV - 21.82)

Style	Tufted 1/10" Gauge Loop Pile Tile
Yarn Construction	100% Solution Dyed Nylon
Pile Yarn Weight	600gsm
Pile Height	3mm
Total Weight	4390gsm
Total Thickness	6mm
Backing	100% Envirobase - minimum of 75% recycled material
Additional Backing	Komfort Bac available on request
Tile Size	50cm x 50cm
Tiles Per Box	20 (5m ²)
Wear Classification	Heavy Contract Class 33
Luxury Class	LC1
Anti-static	Suitable for use with computers. Less than 2Kv
Colour Fastness	Light (BS EN ISO 105:B02) >5 Shampoo (BS 1006:UK-TB:1990) 4-5 Dry Rubbing (BS EN ISO 105:B01) 4-5 Wet Rubbing (BS EN ISO 105:X12) 4-5
Flammability	BS5287 Assessment and labelling of Textile Floorcovering tested to BS4790 (Hot Metal Nut Test) - Low Radius of Char
BS EN 13501	Class Bfl-s1
Impact Noise Reduction	26dB
Castor Chair Test	Suitable for intensive use with castor chairs
Warranty	10 years
VOC Content	E1 in relation to EN 14041:2004
Environmental Status	BREEAM® A Rated

TOTAL COLOURWAY OPTIONS - 12



BROADLOOM
DESIGN



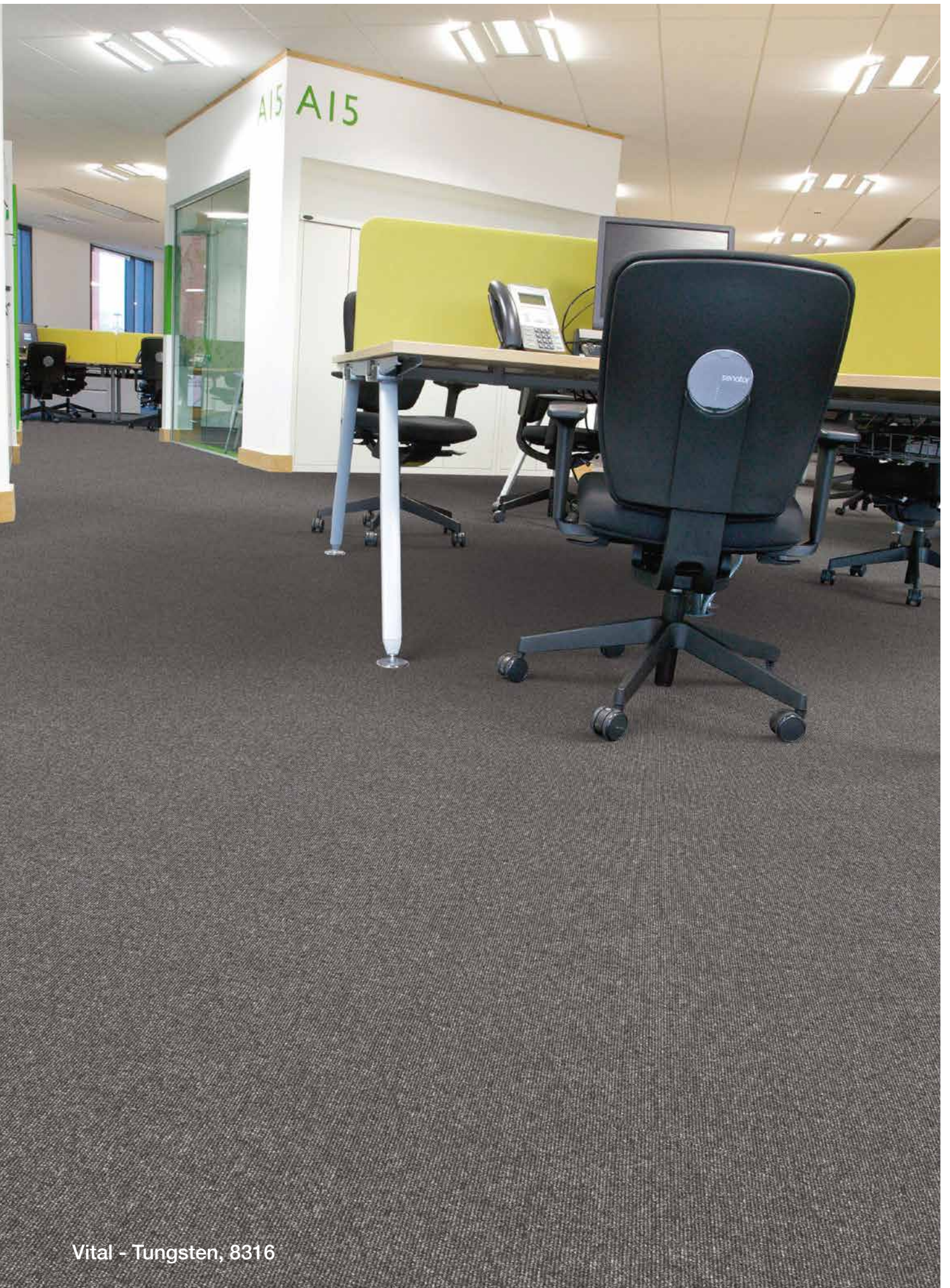
TESSELLATED
DESIGN

AVAILABLE
FROM STOCK



MADE IN
BRITAIN

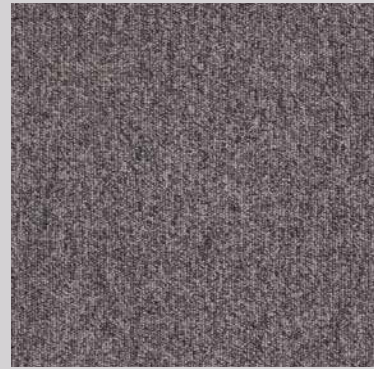
Tile colours representative in print, order a sample for true likeness.



Vital - Tungsten, 8316

LOOP PILE

Workspace Loop	36
Evolve	38
Diversity and Diversity Groove	40
Vital	44
Toccarre	46
Sirocco and Sirocco Stripe	48
Macaw and Macaw Stripe	52



Silver, 8031
(LRV - 13.24)



Platinum, 9235
(LRV - 8.62)



Charcoal, 8050
(LRV - 6.36)



Moorland, 8052
(LRV - 10.05)



Blue Moon, 6123
(LRV - 7.68)



Midnight, 6159
(LRV - 4.17)



Blue Yonder, 6245
(LRV - 3.68)



Magenta Rock, 7246
(LRV - 4.42)



Rose, 2152
(LRV - 6.36)



Sepia, 1160
(LRV - 7.20)



Apple, 6229
(LRV - 21.82)

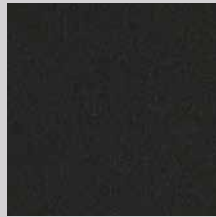
Workspace Loop - Blueberry, 6155



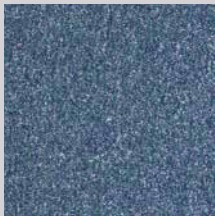
Pampas, 5157
(LRV - 10.13)



Graphite, 8025
(LRV - 5.51)



Onyx, 8181
(LRV - 2.47)



Kingfisher, 5329
(LRV - 10.12)



Indigo, 6049
(LRV - 4.37)



Blueberry, 6155
(LRV - 8.61)



Lavender, 7035
(LRV - 8.20)



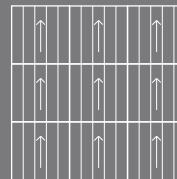
Ruby, 2182
(LRV - 5.35)



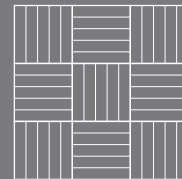
Sandstone, 1015
(LRV - 17.28)

Style	Tufted 1/10" Gauge Loop Pile Tile
Yarn Construction	100% Solution Dyed Nylon
Pile Yarn Weight	580gsm
Pile Height	3mm
Total Weight	4370gsm
Total Thickness	6mm
Backing	100% Envirobase - minimum of 75% recycled material
Additional Backing	Komfort Bac available on request
Tile Size	50cm x 50cm
Tiles Per Box	20 (5m ²)
Wear Classification	Heavy Contract Class 33
Luxury Class	LC1
Anti-static	Suitable for use with computers. Less than 2Kv
Colour Fastness	Light (BS EN ISO 105:B02) >6 Shampoo (BS 1006:UK-TB:1990) 4-5 Dry Rubbing (BS EN ISO 105:B01) 4-5 Wet Rubbing (BS EN ISO 105:X12) 4-5
Flammability	BS5287 Assessment and labelling of Textile Floorcovering tested to BS4790 (Hot Metal Nut Test) - Low Radius of Char
BS EN 13501	Class Bfl-s1
Impact Noise Reduction	26dB
Castor Chair Test	Suitable for intensive use with castor chairs
Warranty	10 years
VOC Content	E1 in relation to EN 14041:2004
Environmental Status	BREEAM® A Rated

TOTAL COLOURWAY OPTIONS - 20



BROADLOOM
DESIGN



TESSELLATED
DESIGN

AVAILABLE
FROM STOCK



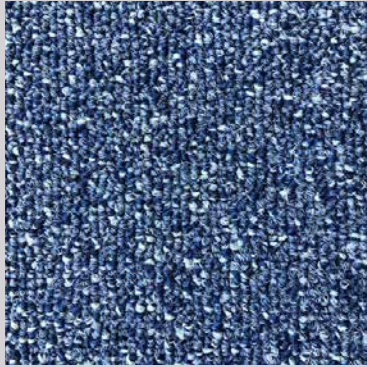
MADE IN
BRITAIN

Tile colours representative in print, order a sample for true likeness.



EVOLVE

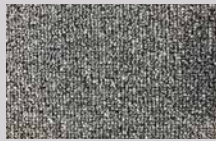
Evolve - Atlantis, 6834



Seacrest
(LRV - 7.66)



Reef
(LRV - 12.00)



Pebble
(LRV - 5.32)



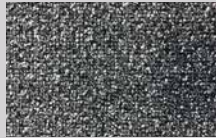
Basalt
(LRV - 7.30)



Shoreline
(LRV - 9.62)



Atlantis
(LRV - 3.35)



Rockpool
(LRV - 5.89)



Lagoon
(LRV - 5.04)



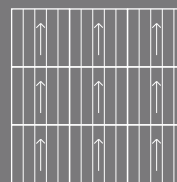
Mineral
(LRV - 10.23)



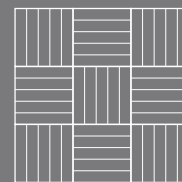
Tide
(LRV - 7.05)

Style	Tufted Loop Pile
Yarn Construction	100% Solution Dyed Nylon (75% Recycled content)
Tuft Gauge	1/10"
Pile Yarn Weight	580gsm
Pile Height	3mm (+/- 0.5mm)
Total Weight	4,370gsm
Pile Density	208,800 /m ²
Thickness	6mm (+/- 0.5mm)
Backing	100% Envirobase - minimum of 75% recycled materials
Anti-static	Suitable for use with computers. Less than 2Kv
Wear Classification	Heavy Contract Class 33
Luxury Class	LC1
Colour Fastness	Light (BS EN ISO 105:B02) >6 To Water (BS EN ISO 105:E01) 4-5 To Shampoo (BS 1006-UK-TB) 4-5 Rubbing (BS EN ISO 105:X12) 4-5
Flammability	BS 4790 Low Radius of Char EN 13501-1 Classification Bfl-s1
Impact Noise Reduction	26dB
Castor Chair BS EN 985	r value 3.3 - Suitable for intensive use
Warranty	10 Years
VOC	E1 in relation to EN 14041:2004
Environmental Status	BREEAM® A Rated

TOTAL COLOURWAY OPTIONS - 10



BROADLOOM
DESIGN



TESSELLATED
DESIGN

AVAILABLE
FROM STOCK



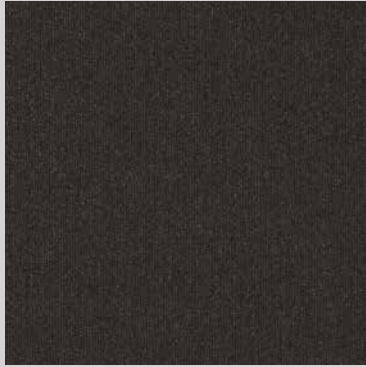
MADE IN
BRITAIN

Tile colours representative in print, order a sample for true likeness.



DIVERSITY

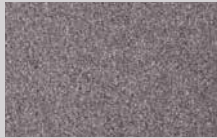
Diversity - London Stone 820 & Foundry Grey 810



Panther, 812
(LRV - 2.94)



Foundry Grey, 810
(LRV - 6.63)



London Stone, 820
(LRV - 10.04)



Liberty, 612
(LRV - 3.13)



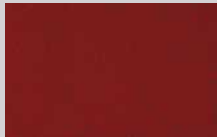
Electric, 625
(LRV - 5.12)



Racing Green, 505
(LRV - 4.89)



Razzmic Berry, 740
(LRV - 6.07)



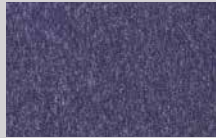
Blazer, 210
(LRV - 4.52)



Lupus Grey, 811
(LRV - 5.32)



Mouse, 830
(LRV - 16.28)



Denim, 616
(LRV - 4.95)



Skylight, 640
(LRV - 7.65)



Grasshopper, 550
(LRV - 14.41)



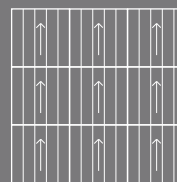
Purple Rain, 750
(LRV - 4.26)



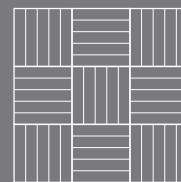
Bark, 108
(LRV - 9.82)

Style	Tufted 1/10" Gauge Loop Pile Tile
Yarn Construction	100% Solution Dyed Nylon
Pile Yarn Weight	540gsm
Pile Height	3mm
Total Weight	4330gsm
Total Thickness	5.5mm
Backing	100% Envirobase - minimum of 75% recycled material
Additional Backing	Komfort Bac available on request
Tile Size	50cm x 50cm
Tiles Per Box	20 (5m ²)
Wear Classification	Heavy Contract Class 33
Luxury Class	LC1
Anti-static	Suitable for use with computers. Less than 2Kv
Colour Fastness	Light (BS EN ISO 105:B02) >6 Shampoo (BS 1006:UK-TB:1990) 4-5 Dry Rubbing (BS EN ISO 105:B01) 4-5 Wet Rubbing (BS EN ISO 105:X12) 4-5
Flammability	BS5287 Assessment and labelling of Textile Floorcovering tested to BS4790 (Hot Metal Nut Test) - Low Radius of Char
BS EN 13501	Class Bfl-s1
Impact Noise Reduction	26dB
Castor Chair Test	Suitable for intensive use with castor chairs
Warranty	10 years
VOC Content	E1 in relation to EN 14041:2004
Environmental Status	BREEAM® A Rated

TOTAL COLOURWAY OPTIONS - 15



BROADLOOM
DESIGN



TESSELLATED
DESIGN

AVAILABLE
FROM STOCK



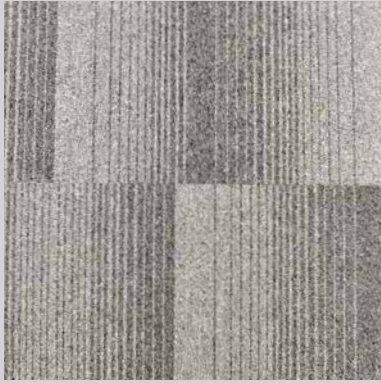
MADE IN
BRITAIN

Tile colours representative in print, order a sample for true likeness.



DIVERSITY GROOVE

Diversity Groove - Armada, 812820



Vibe, 810820
(LRV - 8.04)



Asha, 812810
(LRV - 4.39)



Armada, 812820
(LRV - 5.31)



Jaxx, 616810
(LRV - 5.74)

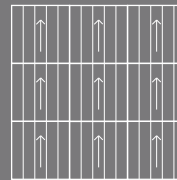


Gusto, 616812
(LRV - 3.57)

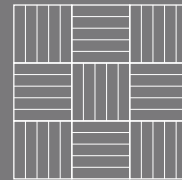
Style	Tufted 1/10" Gauge Loop Pile Tile
Yarn Construction	100% Solution Dyed Nylon
Pile Yarn Weight	540gsm
Pile Height	3mm
Total Weight	4330gsm
Total Thickness	5.5mm
Backing	100% Envirobase - minimum of 75% recycled material
Additional Backing	Komfort Bac available on request
Tile Size	50cm x 50cm
Tiles Per Box	20 (5m ²)
Wear Classification	Heavy Contract Class 33
Luxury Class	LC1
Anti-static	Suitable for use with computers. Less than 2Kv
Colour Fastness	Light (BS EN ISO 105:B02) >6 Shampoo (BS 1006:UK-TB:1990) 4-5 Dry Rubbing (BS EN ISO 105:B01) 4-5 Wet Rubbing (BS EN ISO 105:X12) 4-5
Flammability	BS5287 Assessment and labelling of Textile Floorcovering tested to BS4790 (Hot Metal Nut Test) - Low Radius of Char
BS EN 13501	Class Bfl-s1
Impact Noise Reduction	26dB
Castor Chair Test	Suitable for intensive use with castor chairs
Warranty	10 years
VOC Content	E1 in relation to EN 14041:2004
Environmental Status	BREEAM® A Rated

Diversity Groove is a random lay product

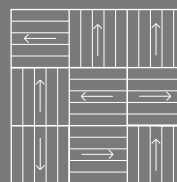
TOTAL COLOURWAY OPTIONS - 5



BROADLOOM
DESIGN



TESSELLATED
DESIGN



RANDOM LAY
DESIGN

AVAILABLE
FROM STOCK



Tile colours representative in print, order a sample for true likeness.



VITAL

Vital - Tungsten, 8316



Titanium, 8001
(LRV - 7.11)



Mercury, 878316
(LRV - 3.91)



Tungsten, 8316
(LRV - 5.09)



Carbon, 8007
(LRV - 2.54)



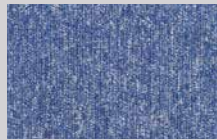
Krypton, 6100
(LRV - 11.69)



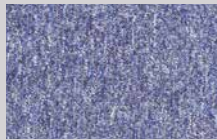
Hydrogen, 6120
(LRV - 9.40)



Granite, 8302
(LRV - 9.86)



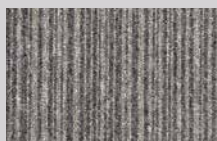
Glacier, 6013
(LRV - 6.90)



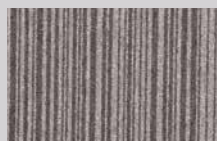
Marine, 6310
(LRV - 6.30)



Sea Blue, 6011
(LRV - 5.49)



Nickel, 868302
(LRV - 7.54)



Zinc, 878302
(LRV - 6.91)



Ice, 876013
(LRV - 4.85)



Arctic, 876310
(LRV - 4.26)



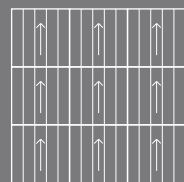
Zircon, 6890
(LRV - 10.93)



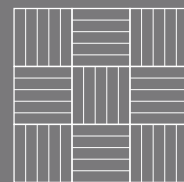
Oxide, 1193
(LRV - 8.77)

Style	Tufted 1/10" Gauge Loop Pile Tile
Yarn Construction	100% Solution Dyed Nylon
Pile Yarn Weight	500gsm
Pile Height	3mm
Total Weight	4090gsm
Total Thickness	5.5mm
Backing	100% Envirobase - minimum of 75% recycled material
Additional Backing	Komfort Bac available on request
Tile Size	50cm x 50cm
Tiles Per Box	20 (5m ²)
Wear Classification	Heavy Contract Class 33
Luxury Class	LC1
Anti-static	Suitable for use with computers. Less than 2Kv
Colour Fastness	Light (BS EN ISO 105:B02) >6 Shampoo (BS 1006:UK-TB:1990) 4-5 Dry Rubbing (BS EN ISO 105:B01) 4-5 Wet Rubbing (BS EN ISO 105:X12) 4-5
Flammability	BS5287 Assessment and labelling of Textile Floorcovering tested to BS4790 (Hot Metal Nut Test) - Low Radius of Char
BS EN 13501	Class Bfl-s1
Impact Noise Reduction	24dB
Castor Chair Test	Suitable for intensive use with castor chairs
Warranty	10 years
VOC Content	E1 in relation to EN 14041:2004
Environmental Status	BREEAM® A Rated

TOTAL COLOURWAY OPTIONS - 16



BROADLOOM DESIGN



TESSELLATED DESIGN

AVAILABLE FROM STOCK



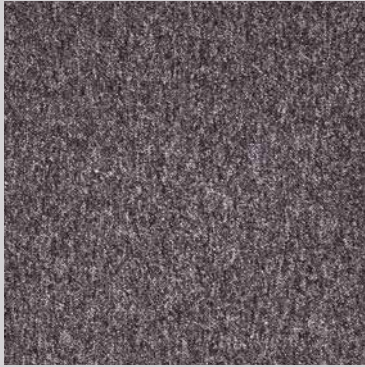
MADE IN BRITAIN

Tile colours representative in print, order a sample for true likeness.

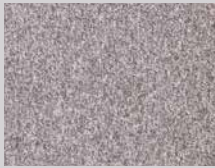


TOCCARRE

Toccarre - Tutto, 6569 Blu, 6558 Montagna, 1549 & Fresco 1652



Termini, 8554
(LRV - 8.96)



Grigia, 9559
(LRV - 16.22)



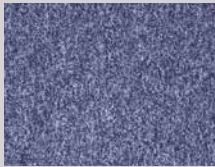
Tutto, 6569
(LRV - 2.19)



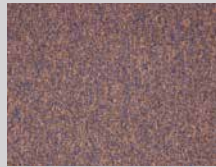
Moderno, 6553
(LRV - 4.98)



Azzurra, 6339
(LRV - 7.75)



Blu, 6558
(LRV - 8.91)



Fresco, 1652
(LRV - 7.85)



Marrone, 1656
(LRV - 8.88)



Montagna, 1545
(LRV - 13.25)



Menta, 5560
(LRV - 6.34)



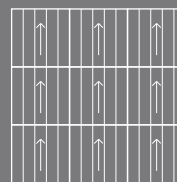
La Mela, 5550
(LRV - 8.36)



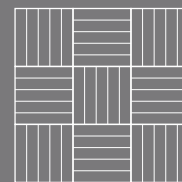
Desmo, 2640
(LRV - 4.52)

Style	Tufted 1/10" Gauge Loop Pile Tile
Yarn Construction	100% Solution Dyed Polypropylene
Pile Yarn Weight	630gsm
Pile Height	3mm
Total Weight	4420gsm
Total Thickness	6mm
Backing	100% Envirobase - minimum of 75% recycled material
Additional Backing	Komfort Bac available on request
Tile Size	50cm x 50cm
Tiles Per Box	20 (5m ²)
Wear Classification	Heavy Contract Class 33
Luxury Class	LC1
Anti-static	Suitable for use with computers. Less than 2Kv
Colour Fastness	Light (BS EN ISO 105:B02) >6 Shampoo (BS 1006:UK-TB:1990) 4-5 Dry Rubbing (BS EN ISO 105:B01) 4-5 Wet Rubbing (BS EN ISO 105:X12) 4-5
Flammability	BS5287 Assessment and labelling of Textile Floorcovering tested to BS4790 (Hot Metal Nut Test) - Low Radius of Char
BS EN 13501	Class Cfl-s1
Impact Noise Reduction	25dB
Castor Chair Test	Suitable for intensive use with castor chairs
Warranty	10 years
VOC Content	E1 in relation to EN 14041:2004
Environmental Status	BREEAM® A Rated

TOTAL COLOURWAY OPTIONS - 12



BROADLOOM
DESIGN



TESSELLATED
DESIGN

AVAILABLE
FROM STOCK



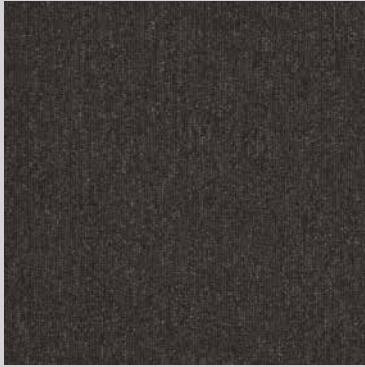
MADE IN
BRITAIN

Tile colours representative in print, order a sample for true likeness.



SIROCCO

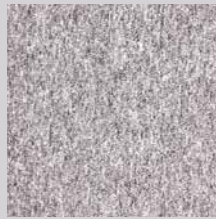
Sirocco - Pewter, 171S & Tempest, 277S



Jet, 821S
(LRV - 2.78)



Quartz, 101S
(LRV - 5.15)



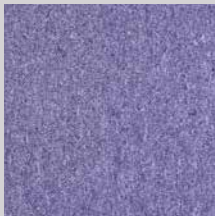
Pewter, 171S
(LRV - 15.55)



Sapphire, 501S
(LRV - 4.95)



Blue John, 896S
(LRV - 5.78)



Topaz, 458S
(LRV - 8.50)



Tempest, 277S
(LRV - 3.22)



Paprika, 459S
(LRV - 6.71)



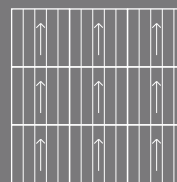
Tanzanite, 743S
(LRV - 4.84)



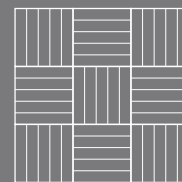
Lime, 318S
(LRV - 15.29)

Style	Tufted 1/10" Gauge Loop Pile Tile
Yarn Construction	100% Solution Dyed Polypropylene
Pile Yarn Weight	580gsm
Pile Height	3.5mm
Total Weight	4370gsm
Total Thickness	6.5mm
Backing	100% Envirobase - minimum of 75% recycled material
Additional Backing	Komfort Bac available on request
Tile Size	50cm x 50cm
Tiles Per Box	20 (5m ²)
Wear Classification	Heavy Contract Class 33
Luxury Class	LC1
Anti-static	Suitable for use with computers. Less than 2Kv
Colour Fastness	Light (BS EN ISO 105:B02) >6 Shampoo (BS 1006:UK-TB:1990) 4-5 Dry Rubbing (BS EN ISO 105:B01) 4-5 Wet Rubbing (BS EN ISO 105:X12) 4-5
Flammability	BS5287 Assessment and labelling of Textile Floorcovering tested to BS4790 (Hot Metal Nut Test) - Low Radius of Char
BS EN 13501	Class Bfl-s1
Impact Noise Reduction	24dB
Castor Chair Test	Suitable for intensive use with castor chairs
Warranty	10 years
VOC Content	E1 in relation to EN 14041:2004

TOTAL COLOURWAY OPTIONS - 10



BROADLOOM
DESIGN



TESSELLATED
DESIGN

AVAILABLE
FROM STOCK



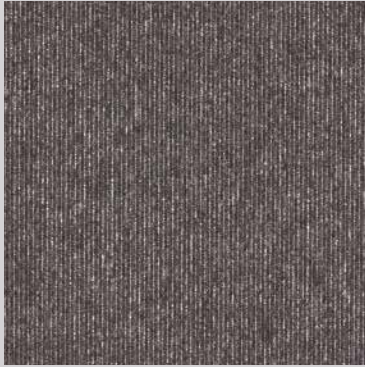
MADE IN
BRITAIN

Tile colours representative in print, order a sample for true likeness.

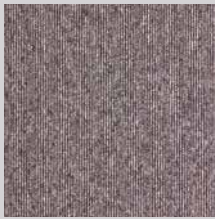


SIROCCO STRIPE

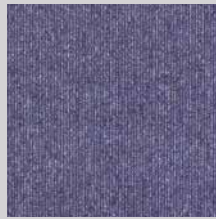
Sirocco Stripe - Spearmint, 318101S & Liquorice, 821101



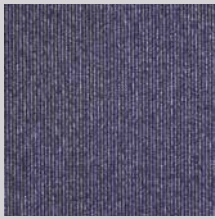
Liquorice, 821101S
(LRV - 3.79)



Humbug, 101171S
(LRV - 12.76)



Blue Candy, 501458S
(LRV - 7.23)



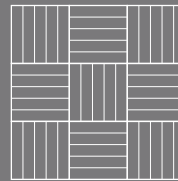
Bubblemint, 821458S
(LRV - 5.66)



Spearmint, 318101S
(LRV - 9.89)

Style	Tufted 1/10" Gauge Loop Pile Tile
Yarn Construction	100% Solution Dyed Polypropylene
Pile Yarn Weight	580gsm
Pile Height	3.5mm
Total Weight	4370gsm
Total Thickness	6.5mm
Backing	100% Envirobase - minimum of 75% recycled material
Additional Backing	Komfort Bac available on request
Tile Size	50cm x 50cm
Tiles Per Box	20 (5m ²)
Wear Classification	Heavy Contract Class 33
Luxury Class	LC1
Anti-static	Suitable for use with computers. Less than 2Kv
Colour Fastness	Light (BS EN ISO 105:B02) >6 Shampoo (BS 1006:UK-TB:1990) 4-5 Dry Rubbing (BS EN ISO 105:B01) 4-5 Wet Rubbing (BS EN ISO 105:X12) 4-5
Flammability	BS5287 Assessment and labelling of Textile Floorcovering tested to BS4790 (Hot Metal Nut Test) - Low Radius of Char
BS EN 13501	Class Bfl-s1
Impact Noise Reduction	24dB
Castor Chair Test	Suitable for intensive use with castor chairs
Warranty	10 years
VOC Content	E1 in relation to EN 14041:2004

TOTAL COLOURWAY OPTIONS - 5



TESSELLATED
DESIGN

AVAILABLE
FROM STOCK

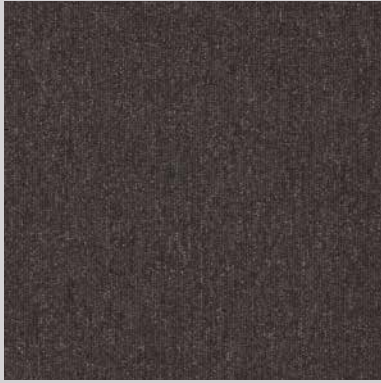


Tile colours representative in print, order a sample for true likeness.

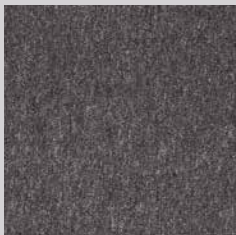


MACAW

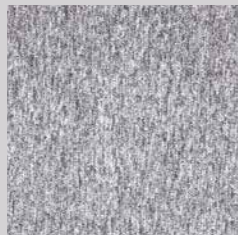
Macaw - Jet, 821M



Jet, 821M
(LRV - 2.68)



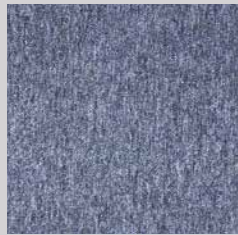
Quartz, 101M
(LRV - 5.94)



Pewter, 171M
(LRV - 15.29)



Sapphire, 501M
(LRV - 5.02)



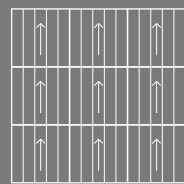
Aegean, 831M
(LRV - 8.17)



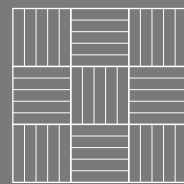
Paprika, 459M
(LRV - 6.24)

Style	Tufted 1/10" Gauge Loop Pile Tile
Yarn Construction	100% Solution Dyed Polypropylene
Pile Yarn Weight	420gsm
Pile Height	3.5mm
Total Weight	4210gsm
Total Thickness	6mm
Backing	100% Envirobase - minimum of 75% recycled material
Tile Size	50cm x 50cm
Tiles Per Box	20 (5m ²)
Wear Classification	General Contract
Luxury Class	LC1
Anti-static	Suitable for use with computers. Less than 2Kv
Colour Fastness	Light (BS EN ISO 105:B02) >6 Shampoo (BS 1006:UK-TB:1990) 4-5 Dry Rubbing (BS EN ISO 105:B01) 4-5 Wet Rubbing (BS EN ISO 105:X12) 4-5
Flammability	BS5287 Assessment and labelling of Textile Floorcovering tested to BS4790 (Hot Metal Nut Test) - Low Radius of Char
BS EN 13501	Class Efl
Impact Noise Reduction	22dB
VOC Content	E1 in relation to EN 14041:2004

TOTAL COLOURWAY OPTIONS - 6



BROADLOOM DESIGN



TESSELLATED DESIGN

AVAILABLE FROM STOCK



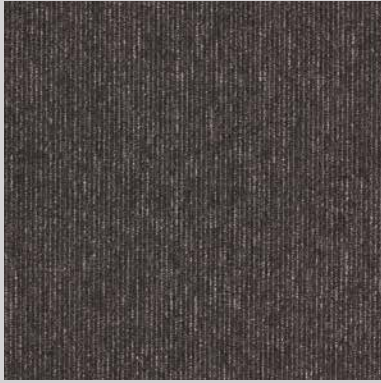
MADE IN BRITAIN

Tile colours representative in print, order a sample for true likeness.

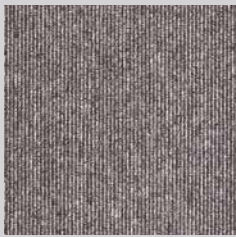


MACAW STRIPE

Macaw Stripe - Jet Quartz, 821101M & Lime Quartz, 318101M



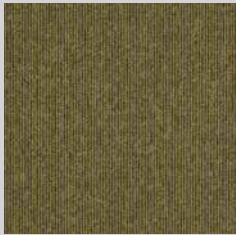
Jet / Quartz, 821101M
(LRV - 3.82)



Quartz / Pewter, 101171M
(LRV - 12.56)



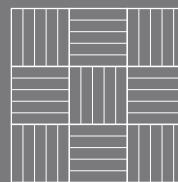
Aegean / Sapphire, 831501M
(LRV - 6.75)



Lime / Quartz, 318101M
(LRV - 9.33)

Style	Tufted 1/10" Gauge Loop Pile Tile
Yarn Construction	100% Solution Dyed Polypropylene
Pile Yarn Weight	420gsm
Pile Height	3.5mm
Total Weight	4210gsm
Total Thickness	6mm
Backing	100% Envirobase - minimum of 75% recycled material
Tile Size	50cm x 50cm
Tiles Per Box	20 (5m ²)
Wear Classification	General Contract
Luxury Class	LC1
Anti-static	Suitable for use with computers. Less than 2Kv
Colour Fastness	Light (BS EN ISO 105:B02) >6 Shampoo (BS 1006:UK-TB:1990) 4-5 Dry Rubbing (BS EN ISO 105:B01) 4-5 Wet Rubbing (BS EN ISO 105:X12) 4-5
Flammability	BS5287 Assessment and labelling of Textile Floorcovering tested to BS4790 (Hot Metal Nut Test) - Low Radius of Char
BS EN 13501	Class Efl
Impact Noise Reduction	22dB
VOC Content	E1 in relation to EN 14041:2004

TOTAL COLOURWAY OPTIONS - 4



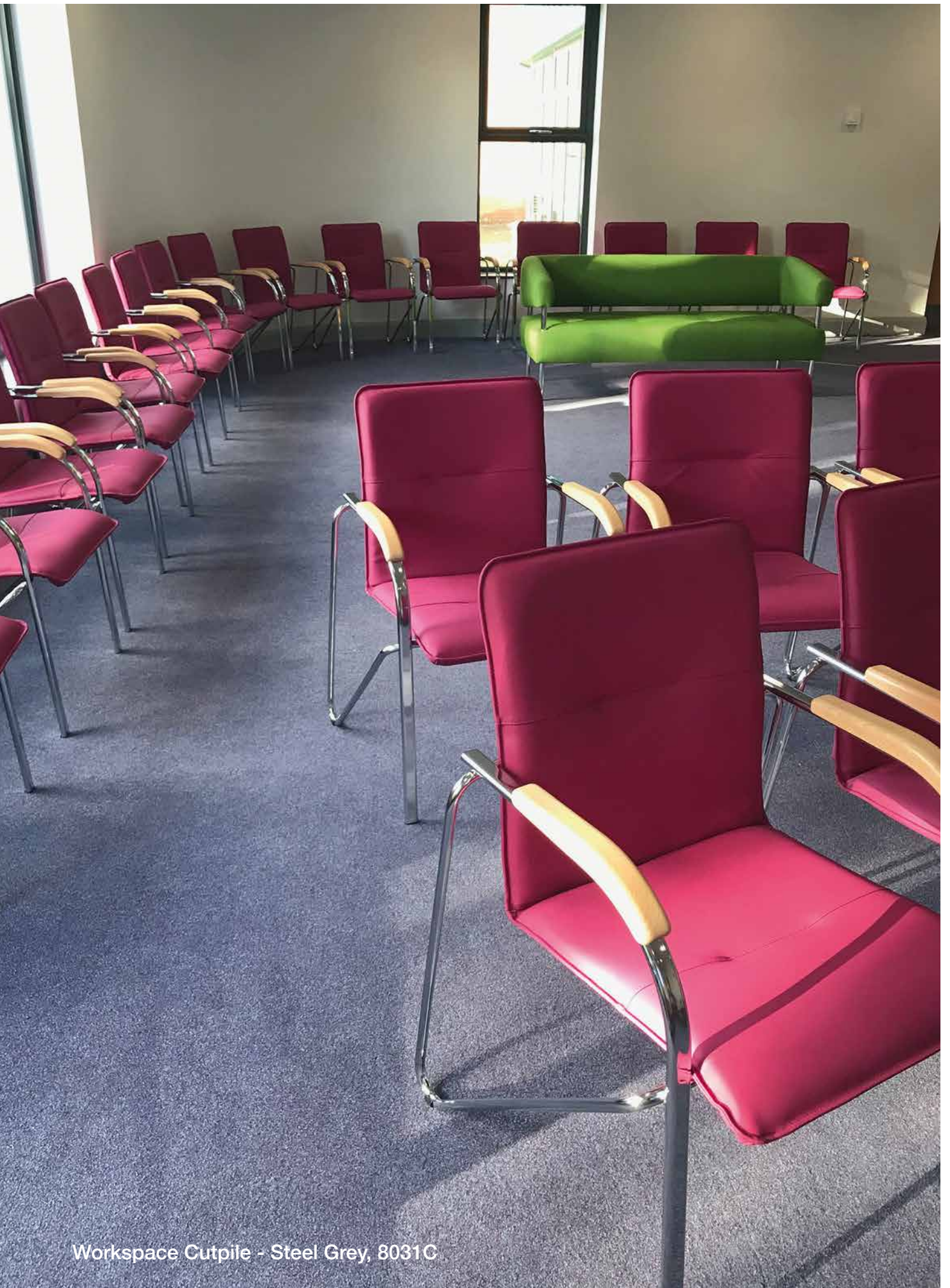
TESSELLATED
DESIGN

AVAILABLE
FROM STOCK



MADE IN
BRITAIN

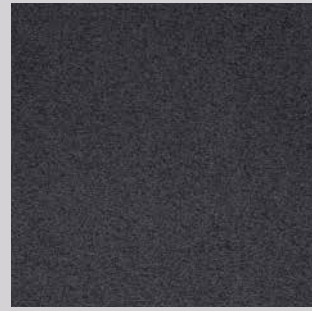
Tile colours representative in print, order a sample for true likeness.



Workspace Cutpile - Steel Grey, 8031C

CUT PILE

Maestro	58
Workspace Cut Pile	60



Charcoal, 903
(LRV - 3.05)



Twilight Cinders, 991
(LRV - 2.18)



Steel, 902
(LRV - 5.88)



Silver, 900
(LRV - 12.15)



Night Jewel, 994
(LRV - 12.55)



Woodland Fern*, 662
(LRV - 16.47)



Deep Blue, 103
(LRV - 2.72)



Brooklyn Nights, 963
(LRV - 5.06)



Royal Regatta, 533
(LRV - 3.36)



Sapphire*, 101
(LRV - 6.43)



Azure Fusion*, 595
(LRV - 6.81)



Celestial Blue*, 569
(LRV - 10.34)



Teal, 100
(LRV - 9.23)



Blue Diamond, 506
(LRV - 12.87)



Emerald Orchestra*, 511
(LRV - 9.26)



Turquoise*, 200
(LRV - 7.76)



Dark Green, 201
(LRV - 3.95)

Maestro - Red, 501



Dublin Bay, 613
(LRV - 9.18)



Indian Ivy*, 601
(LRV - 18.47)



Cocoa Blush, 830
(LRV - 5.94)



Sycamore, 700
(LRV - 6.22)



Dusty Pink*, 800
(LRV - 5.97)



Delhi Bazaar, 463
(LRV - 6.85)



Sunflower Symphony*,
827 (LRV - 12.76)



Velvet Truffle, 823
(LRV - 10.99)



Beige*, 600
(LRV - 17.94)



Earth Glaze, 224
(LRV - 18.24)



Bracken Salts, 817
(LRV - 19.35)



Gold*, 300
(LRV - 22.17)



Nutshell, 386
(LRV - 22.44)



Coral, 400
(LRV - 15.53)



Auburn Falls*, 322
(LRV - 16.83)



Claret, 500
(LRV - 4.16)



Volcanic Splash*, 314
(LRV - 7.96)



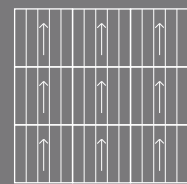
Hot Paprika, 307
(LRV - 8.79)



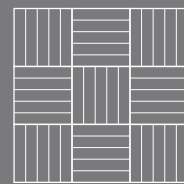
Red, 501
(LRV - 5.50)

Style	Tufted 1/10" Gauge Cut Pile Tile
Yarn Construction	100% Nylon 66
Pile Yarn Weight	1050gsm
Pile Height	5mm
Total Weight	4650gsm
Total Thickness	8mm
Backing	100% Envirobase - minimum of 75% recycled material
Additional backing	Komfort Bac available on request
Tile Size	50cm x 50cm
Tiles Per Box	20 (5m ²)
Wear Classification	Heavy Contract Class 33
Luxury Class	LC2
Anti-static	Suitable for use with computers. Less than 2Kv
Colour Fastness	Light (BS EN ISO 105:B02) >5 Wet Rubbing (BS EN ISO 105:X12) >4
Flammability	BS5287 Assessment and labelling of Textile Floorcovering tested to BS4790 (Hot Metal Nut Test) - Low Radius of Char
BS EN 13501	Class Bfl-s1
Impact Noise Reduction	28dB
Castor Chair Test	Suitable for use with castor chairs
Warranty	10 years
VOC Content	E1 in relation to EN 14041:2004

TOTAL COLOURWAY OPTIONS - 36



BROADLOOM
DESIGN



TESSELLATED
DESIGN

AVAILABLE
FROM STOCK

Tile colours representative in print, order a sample for true likeness.

*These colours are subject to a minimum order quantity of 200m²



WORKSPACE CUT PILE

Workspace Cutpile - Iron Grey, 8025C Costal Blue,
6159C Gecko Green, 5009C & Cayenne, 3038C.



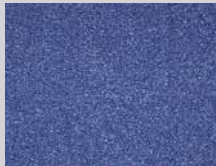
Steel Grey, 8031C
(LRV - 11.62)



Iron Grey, 8025C
(LRV - 5.26)



Coastal Blue, 6159C
(LRV - 3.59)



Sky Blue, 6123C
(LRV - 7.34)



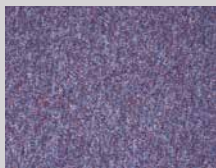
Biscay Blue, 6051C
(LRV - 3.35)



Nordic Green, 5011C
(LRV - 8.15)



Gecko Green, 5009C
(LRV - 9.72)



Grape Blue, 6155C
(LRV - 6.91)



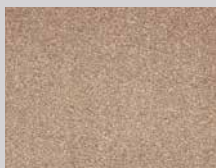
Lilac, 7035C
(LRV - 6.59)



Salsa, 7040C
(LRV - 3.28)



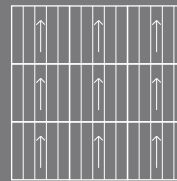
Cayenne, 3038C
(LRV - 6.11)



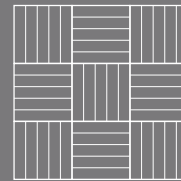
Wheat, 1015C
(LRV - 16.70)

Style	Tufted 1/10" Gauge Cut Pile Tile
Yarn Construction	100% Solution Dyed Nylon
Pile Yarn Weight	850gsm
Pile Height	5mm
Total Weight	4650gsm
Total Thickness	8.5mm
Backing	100% Envirobase - minimum of 75% recycled material
Tile Size	50cm x 50cm
Tiles Per Box	16 (4m ²)
Wear Classification	Heavy Contract Class 33
Luxury Class	LC2
Anti-static	Suitable for use with computers. Less than 2Kv
Colour Fastness	Light (BS EN ISO 105:B02) 6 Wet Rubbing (BS EN ISO 105:X12) 4-5
Flammability	BS5287 Assessment and labelling of Textile Floorcovering tested to BS4790 (Hot Metal Nut Test) - Low Radius of Char
BS EN 13501	Class Bfl-s1
Impact Noise Reduction	28dB
Castor Chair Test	Suitable for use with castor chairs
Warranty	10 years
VOC Content	E1 in relation to EN 14041:2004

TOTAL COLOURWAY OPTIONS - 12



BROADLOOM
DESIGN



TESSELLATED
DESIGN

AVAILABLE
FROM STOCK



MADE IN
BRITAIN

Tile colours representative in print, order a sample for true likeness.



Duera - Edwardian Oak, 3131 & Codec - Pathway Accent, 5229181

LUXURY COMMERCIAL VINYL

Rappórt	64
Duera	66



RAPPÓRT

Rapport - Shadow Ash, 2894 Dockyard Oak, 2947 & Chalet Oak, 2948

WOOD EFFECT



Grey Limed Oak, 2798



Lakeside Pine, 2889



Burnt Sienna Wood,
2893



Shadow Ash, 2894



French Grey Elm*,
2895



Bowland Oak, 2896



Midsummer Oak, 2897



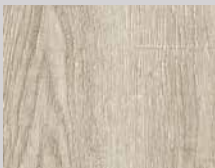
Orchard Oak, 2898



Kentucky Timberwood,
2899

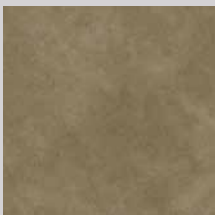


Dockyard Oak, 2947



Chalet Oak, 2948

STONE EFFECT



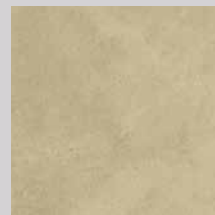
Seasoned Concrete,
2969



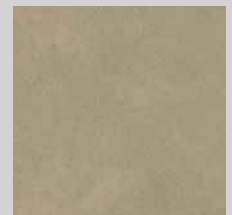
Copper Metalstone,
2970



Dark Metalstone,
2979



Fresh Concrete,
2799



Ashen Concrete,
2796

Style	Luxury Commercial Vinyl
Material	Heterogenous PVC
Surface Treatment	PUR
Total Weight	4290gsm
Total Thickness	2.5mm
Wear Layer Thickness	0.55mm
Wood Effect Plank Size	18.42cm x 121.92cm *152.4 x 1219.2
Stone Effect Plank Size	45.72cm x 91.44cm
Wood Effect Planks Per Box	15 (3.37m ²)
Stone Effect Planks Per Box	8 (3.34m ²)
Anti-static	Suitable for use with computers. Less than 2Kv
Colour Fastness	Light (BS EN ISO 105:B02) ≥6
Flammability BS EN 13501	Class Bfl-s1
Castor Chair Test	Suitable for use with castor chairs
Dimensional Stability	<0.1%
Residual Indentation	0.05mm
Underfloor Heating	Suitable, maximum 27°C

*152.4 x 1219.2



DUERA

Duera - Edwardian Oak, 3131 & Barleycorn Oak, 3128

WOOD EFFECT



Twilight Ash, 3121



Barleycorn Oak, 3128



Devonshire Oak, 3129



Edwardian Oak, 3131



Dark Linear Wood, 3123



Wharf Side Ash, 3124



Hemingway Oak, 3126

STONE EFFECT



Polished Cement, Tile, 3132



Alloyed Cement, Tile, 3133



Downtown Cement, Tile, 3135

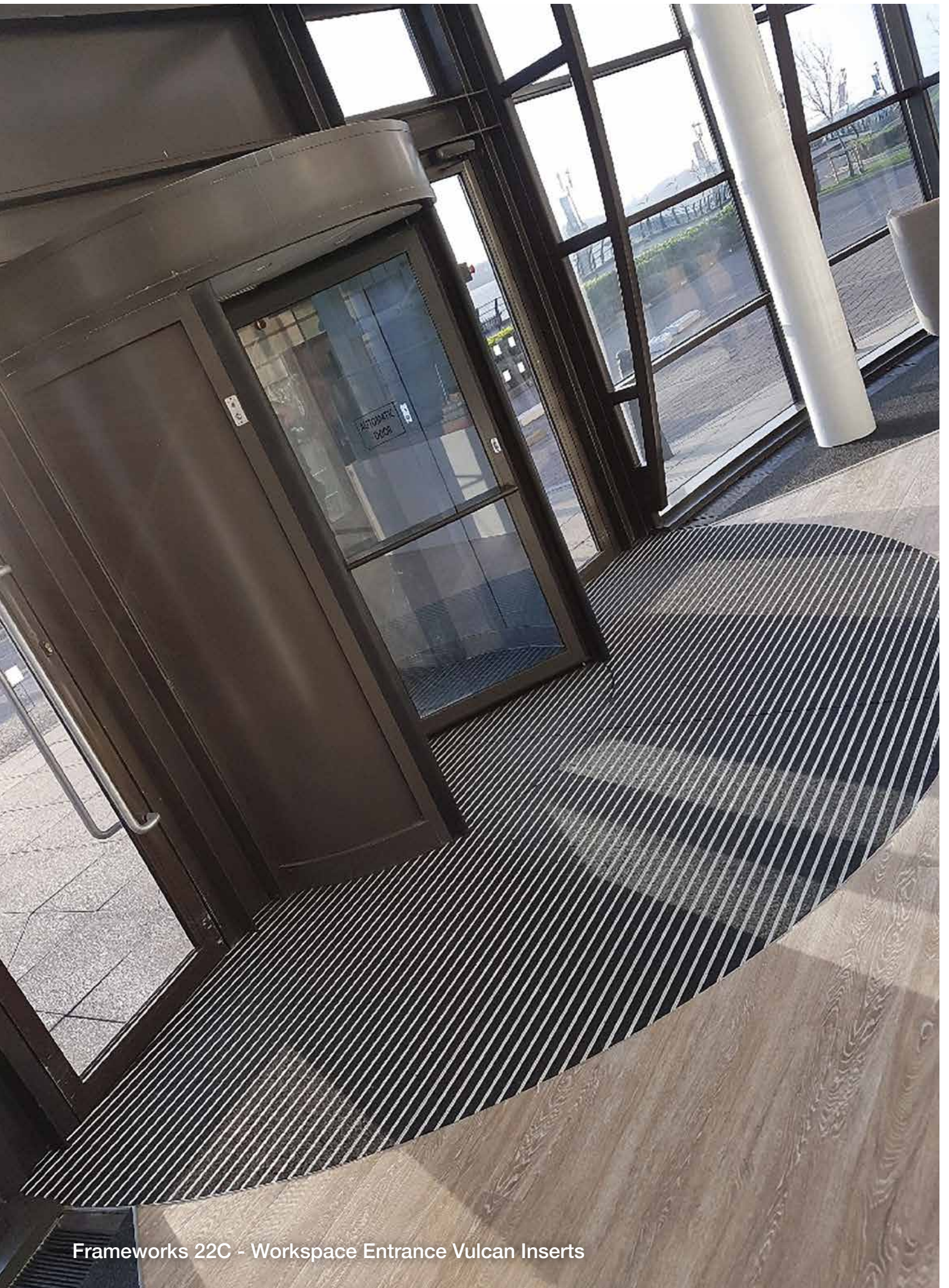


Suburban Cement, Tile, 3134



Cliffside Slate, Plank, 3136

Style	Luxury Commercial Vinyl
Material	Heterogenous PVC
Surface Treatment	PUR
Total Weight	8000gsm
Total Thickness	5mm
Wear Layer Thickness	0.7mm
Wood Effect Plank Size	17.78cm x 121.92cm
Stone Effect Plank Size	30.48cm x 60.96cm
Stone Effect Tile Size	60cm x 60cm
Wood Effect Planks Per Box	10 (2.17m ²)
Stone Effect Planks Per Box	8 (1.86m ²)
Stone Effect Tiles Per Box	6 (2.16m ²)
Anti-static	Suitable for use with computers. Less than 2Kv
Colour Fastness	Light (BS EN ISO 105:B02) ≥6
Flammability BS EN 13501	Class Bfl-s1
Castor Chair Test	Suitable for use with castor chairs
Dimensional Stability	<0.1%
Residual Indentation	0.05mm
Underfloor Heating	Suitable, maximum 27°C



Frameworks 22C - Workspace Entrance Vulcan Inserts

ENTRANCE MATTING

PRIMARY

Frameworks	70
Treadloc 25	72
Entrack 50	76
Treadsure 205	78

SECONDARY

Workspace Entrance	80
--------------------	----

PRIMARY

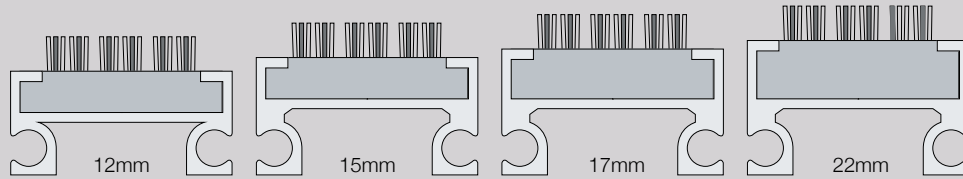
FRAMEWORKS

Frameworks is a unique range of tough and durable aluminium entrance systems with a host of material and colour insert options.

How to choose your frameworks system:

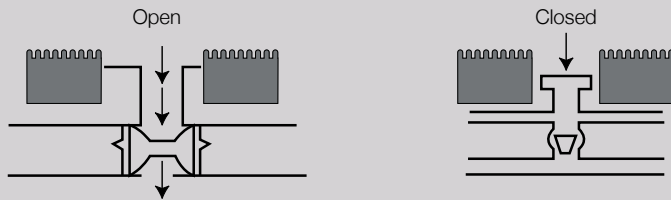
Stage 1:

Select your height



Stage 2:

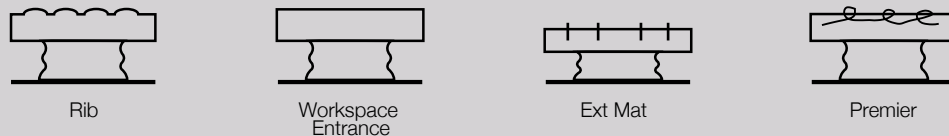
Pick your construction



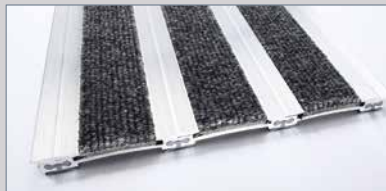
Open - collect dirt and moisture inside the mat/matwell rather than on the surface. Rollable for cleaning.
Closed - Dirt and moisture collected on the surface of the mat.

Stage 3:

Pick your insert from 13 options



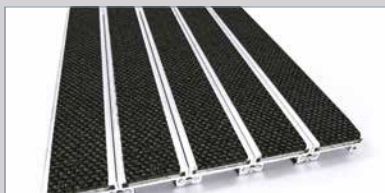
Frameworks 12



Frameworks 15C



Frameworks 17OP



Frameworks 17C



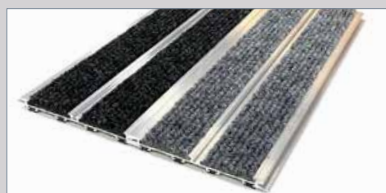
Frameworks 22OP



Frameworks 22C



Frameworks 17CS

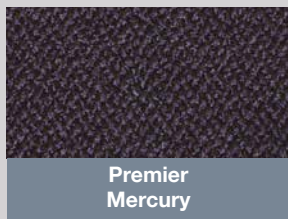
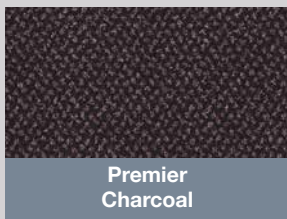
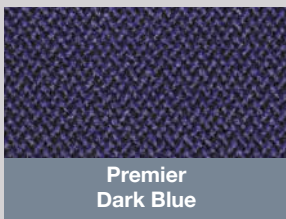
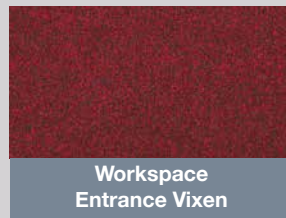
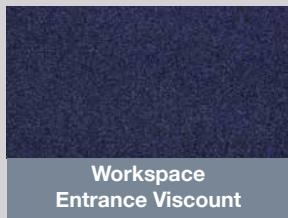
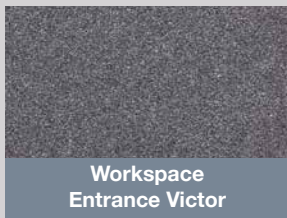
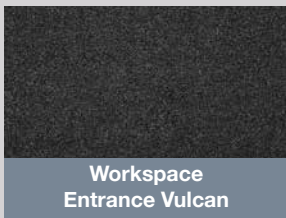


Frameworks Clic-Fix

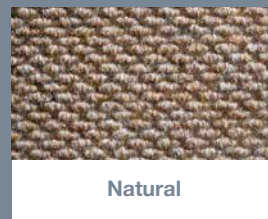
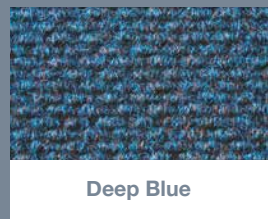
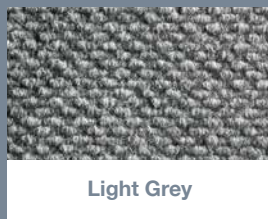
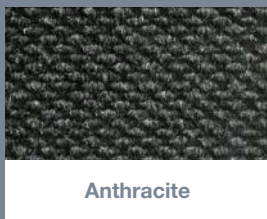
C = Closed
OP = Open
CS = Closed Scraper
DR = Drainable



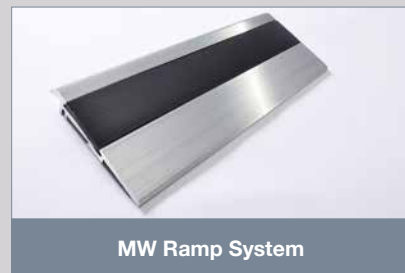
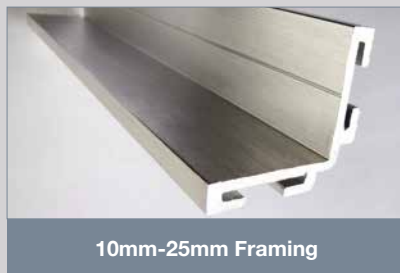
Available colourways:



MW Maxim



Accessories:





PRIMARY

TREADLOC 25

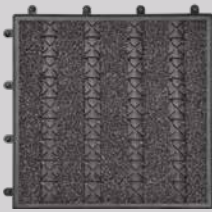
Treadloc 25 by Mat.Works is a revolutionary modular matting solution. Manufactured from nitrile rubber, the 25cm x 25cm tile may be small but packs an almighty punch when it comes to performance.

Specifically designed to withstand heavy footfall, Treadloc 25 will not expand, contract, fade or become brittle, nor will it bend or buckle under pressure making it an ideal heavy contract solution for entrance areas in every sector. Unlike aluminium solutions, Treadloc 25 can withstand slight undulations in the sub-floor, which are sometimes unavoidable, without compromising the strength and performance of the product.

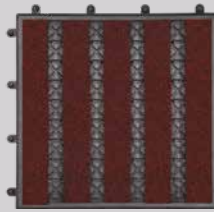
Treadloc 25 tiles are easily interchangeable and designed with interlocking male and female components for ease of installation. The versatile tiles can be quarter-turned during installation to create a checkerboard effect allowing for multi-directional entrances. There is also the added benefit of being able to purchase individual Treadloc 25 tiles, meaning any damaged tiles can be replaced with ease.

Treadloc 25 - Workspace Entrance Victor Inserts

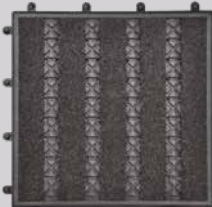
INSERT OPTIONS



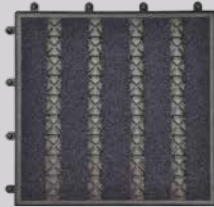
Workspace Entrance Victor



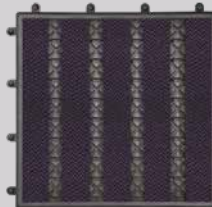
Workspace Entrance Vixen



Workspace Entrance Vulcan



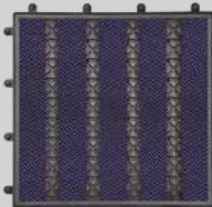
Workspace Entrance Viscount



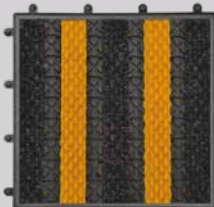
Premier Mercury



Premier Charcoal



Premier Dark Blue



MW Maxim Yellow and MW Maxim Anthracite

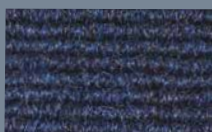
MW Rib HD inserts now available



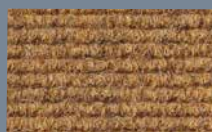
Anthracite



Light Grey



Deep Blue



Natural

Dimensions

25cm x 25cm

Locking Guides

Easy Inter-locking system as standard. Removable male and female connectors.

Composition

Nitrile rubber composition

Dry Rubbing

(BS1006:X12) 4 - 5

Wet Shampoo

(851006:UK-TB) 4 - 5

Performance

Nitrile Rubber is resistant to oil, grease & fuel.

Resistant to stable temperatures

40-180 C

Wear Classification

Heavy Contract Class 33

Product Weight

Diamond 12,300gsm

Premier 13,500gsm

Flammability

BS EN 13501 - Cfl-s1

Twice the weight of leading competitor products - twice the durability

Treadloc 25 provides a flammability rating of Cfl-s2 (BS EN 14041:2004)



Perfect for Healthcare

The nitrile rubber in Treadloc 25 is now manufactured with copper compounds, a material that has been proven to have anti-microbial properties, combating the spread of hospital-acquired infections, including MRSA.

The product has been tested to ISO 22196, which specifies a method of evaluating the antibacterial activity of antibacterial-treated plastics, and other non-porous surfaces of products.

The results showed that the copper in the Treadloc 25 killed 99.29% of MRSA Bacterium.



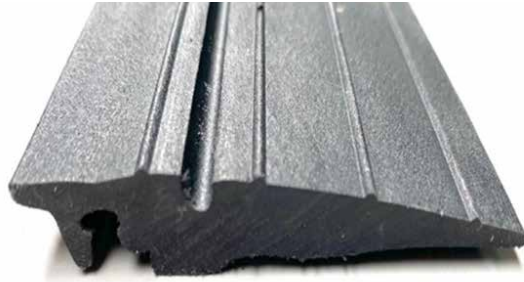
When examined under the Coefficient of Friction test (TRRL Pendulum test in accordance with BS 7976-2:200+A1:2013), Treadloc 25 has been proven to provide a low risk for slips in both dry and wet conditions.



NO MATWELL OR RECESS? NO PROBLEM!
TREADLOC 25 HAS AN OPTIONAL CLICK-FIT RAMPING SYSTEM...



Dimensions: W 125mm x H 125mm



Dimensions: W 66mm x L 2000mm x H 12mm



Treadloc 25
- Workspace Entrance Victor Inserts

TREADLOC 25 RAMPING SOLUTION

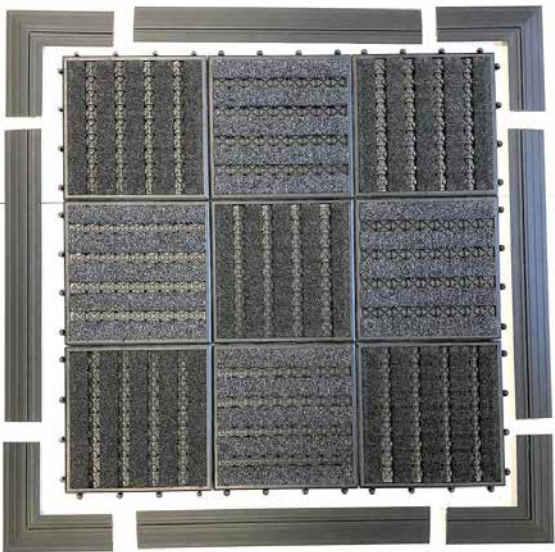
Description:

Treadloc 25 can be surface-mounted, with the option of a heavy duty click-fit ramping system, making the product suitable for buildings without a matwell or recess.

The heavy-duty ramped edges allow wheeled and trolley access, as well as helping to prevent trip accidents. The system allows our popular products to be used to create a 'surface matwell' where a mat is laid directly on top of the floor.

Key Features:

- Ramping system to enable Treadloc 25 to be surface-mounted
- Click fit mechanism for easy installation
- Made from durable nitrile rubber
- Pre-mitred corners for accuracy
- Available in 2m lengths
- Incorporate a colour of your choice into the ramp debris channel, for a striking and stand-out finish (as shown in the image on the left).



Treadloc 25 surface mounted with ramping solution



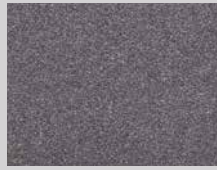
PRIMARY
ENTRACK 50

Entrack 50 - MW Rib Anthracite Inserts

INSERT OPTIONS



Workspace Entrance Vulcan



Workspace Entrance Victor



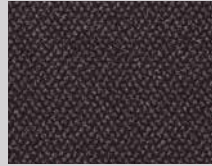
Workspace Entrance Viscount



Workspace Entrance Vixen



Premier Dark Blue



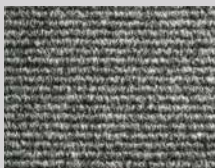
Premier Charcoal



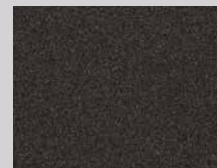
Premier Mercury



MW Rib Anthracite



MW Rib Light Grey



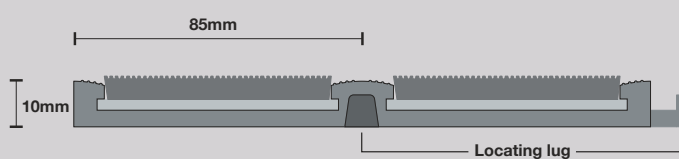
EXT Mat Anthracite

Dimensions	50cm x 50cm
Insert Width	85mm
Connection	Integral 'lock down' fixing system
Colourway Options	10
Environmental options	Recyclable and reusable
Base	Non-pvc polymer base

With its click fit connections, Entrack 50 can be installed with ease.



Connect Entrack 50 together to create any size entrance mat required:



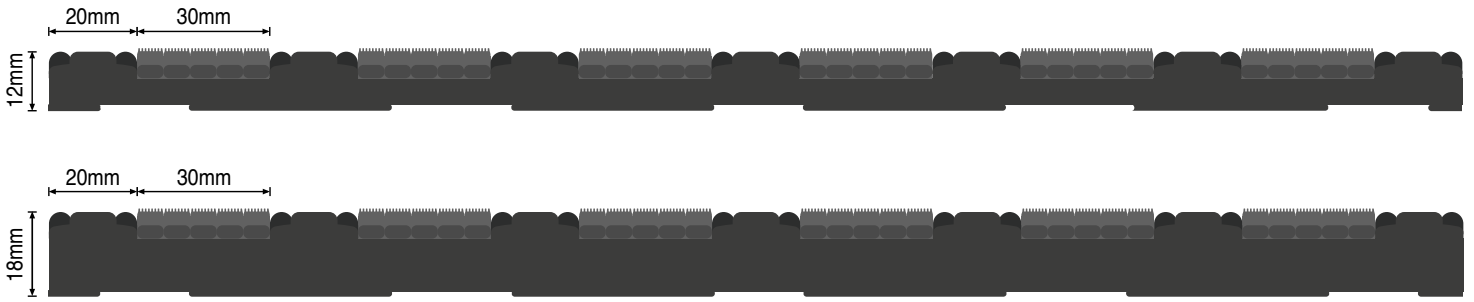
A flexible modular system made from TPE which will not expand, contract or fade in colour. An extremely versatile product, Entrack 50 carpet strips are interchangeable and are suitable for entrances with or without matwells.

- High specification low profile platform
- Easy to cut and shape to bespoke patterns
- Recyclable and reusable
- Will not tap, bounce or buckle under heavy footfall
- Easily cut and trimmed on site
- Made in Britain
- Suitable for external or internal areas



MADE IN
BRITAIN

Tile colours representative in print, order a full tile for true likeness.



Treadsure 205
- MW Rib Anthracite Inserts

TREADSURE 205

Description:

Treadsure 205 by Mat.Works Entrance Solutions has been designed not just for extremely heavy footfall but also with wheeled traffic entrances in supermarkets, retail, education, and healthcare in mind - providing an alternative to aluminium matting systems. Manufactured from nitrile rubber to provide optimum performance and has a host of key features that set the product apart from any other standard modular matting system.

One of these is its sheer durability, which is provided by the product size and weight, ensuring it is one of the heaviest modular matting solutions available on the market. This sturdiness of Treadsure 205 provides significant durability when installed. It will not expand, contract, fade or become brittle, nor will it bend or buckle under pressure making it an ideal heavy contract solution for entrance areas in every sector.

The weight ensures, when installed correctly, that Treadsure will not move or slip in the matwell. It also makes installation easier, as there are no click or interlocking systems. If more than one system is needed, the modules are simply be placed next to each other - significantly reducing any potential installation times.

Simple to install in most matwells.

Weight cannot be rivalled in the current market.

Will not buckle or bounce under pressure, making it suitable for wheel and trolley traffic.

Perfect for healthcare environments due to its copper compounds - a material that has been proven to have anti-microbial properties, combating the spread of hospital-acquired infections, including MRSA. Can be fitted with a host of carpet inserts and debris channel fillers to match any style.

Can be fitted with a host of carpet inserts to match any style.

A cost-effective solution when compared to aluminium products.



INSERT OPTIONS



MW Rib HD
Anthracite



MW Rib HD
Light Grey



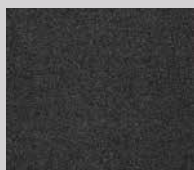
MW Rib HD
Natural



MW Rib HD
Deep Blue



Workspace Entrance
Viscount



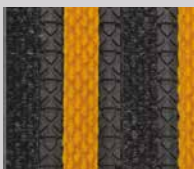
Workspace Entrance
Vulcan



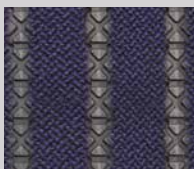
Workspace Entrance
Victor



Workspace Entrance
Vixen



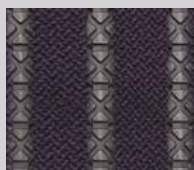
MW Maxim Yellow and MW
Maxim Anthracite (Safety
Colour Inserts)



Premier Dark Blue



Premier Charcoal



Premier Mercury

Technical data:

Module Size

205cm x 50cm x 12mm / 18mm

Seamless Installation

Seamlessly place two or more
modules next to each other without
the need for any locking mechanism

Composition

Nitrile rubber composition

Performance

Nitrile rubber is resistant to oil, grease,
and fuel

Wear Classification

Heavy Contract Class 33

Weight

14,000gsm (12mm), 20,000gsm (18m)

Fire Rating

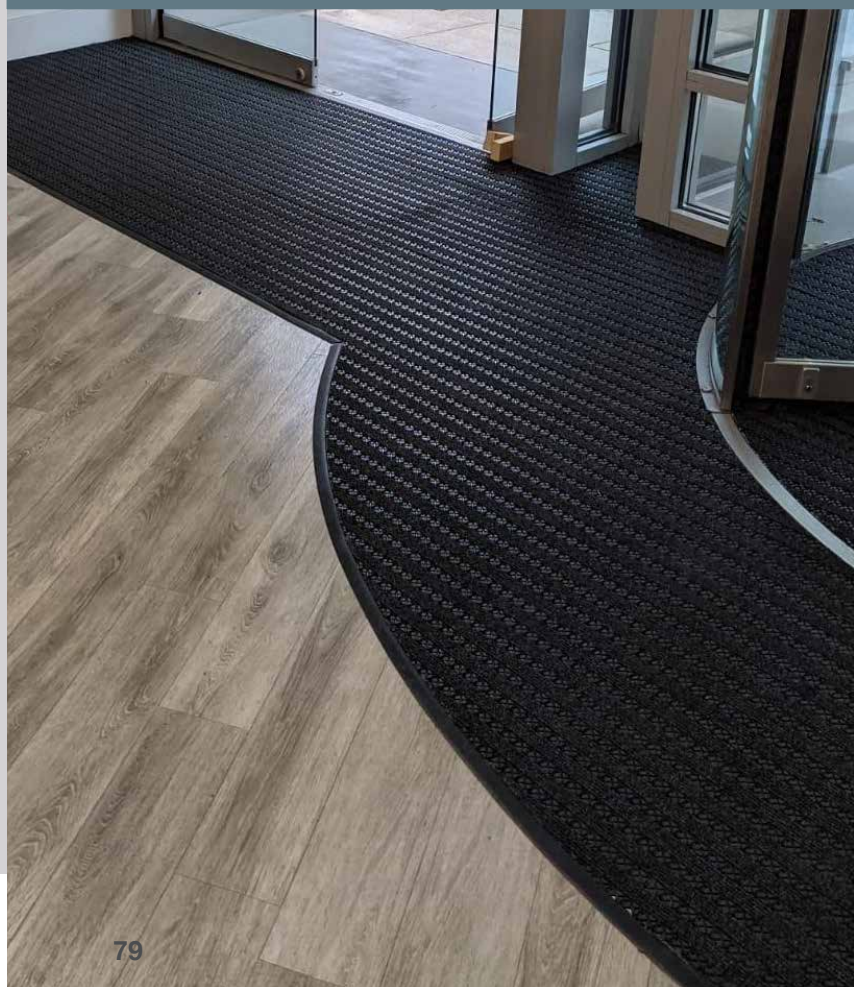
CFL-S2

Anti-Microbial

Tested to ISO 22196

Anti-Slip

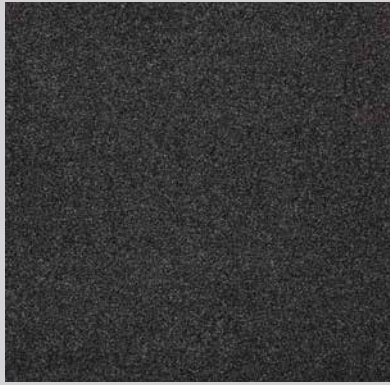
TRRL Pendulum test - very low risk for
slips in both dry and wet conditions





SECONDARY
WORKSPACE
ENTRANCE

Workspace Entrance - Vulcan



Vulcan
(LRV - 3.48)



Vixen
(LRV - 3.24)



Victor
(LRV - 4.87)



Viscount
(LRV - 2.69)

Style	1/10th Gauge
Yarn Construction	100% solution dyed nylon
Pile Yarn Weight	1,000gsm
Pile Height	5mm +/- 0.5mm
Total Weight	Tile 4,800 gsm / Sheet 1,800 gsm
Pile Density	114,260 tufts per square metre
Total Thickness	Tile 9mm / Sheet 8mm
Backing	100% Envirobase backing with minimum of 75% recycled material / Unitary Bac
Dimensions	50cm x 50cm tile / 2m x 20m
Wear Classification	Heavy Contract Class 33
Colour Fastness	To Water - 5 To Light - 5 To Rubbing - 4.5
Flammability	BS 4790 - Low Radius of Char BS EN 13501 - Cfl-s1
Warranty	10 years
VOC Content	E1 in relation to EN 14041:2004

TOTAL COLOURWAY OPTIONS - 4

- All products conform to BS8300
- Low LRV values compared to aluminium, LVL and fibrebonded products ensuring a positive point difference is easy to achieve for areas where partially sighted traffic will be important to consider
- Equalities Act 2010 compliant
- Entrance matting resistant to point loading and scuffing from rubber wheels and walking aids

AVAILABLE
FROM STOCK



Tile colours representative in print, order a sample for true likeness.



OUR FUTURE OUR HISTORY

COMMITTED TO UK MANUFACTURING

INTRODUCING

paragon

CARPET TILES

Discover more about Paragon Carpet Tiles, one of the UK's leading design-led carpet tile manufacturers.



Environment

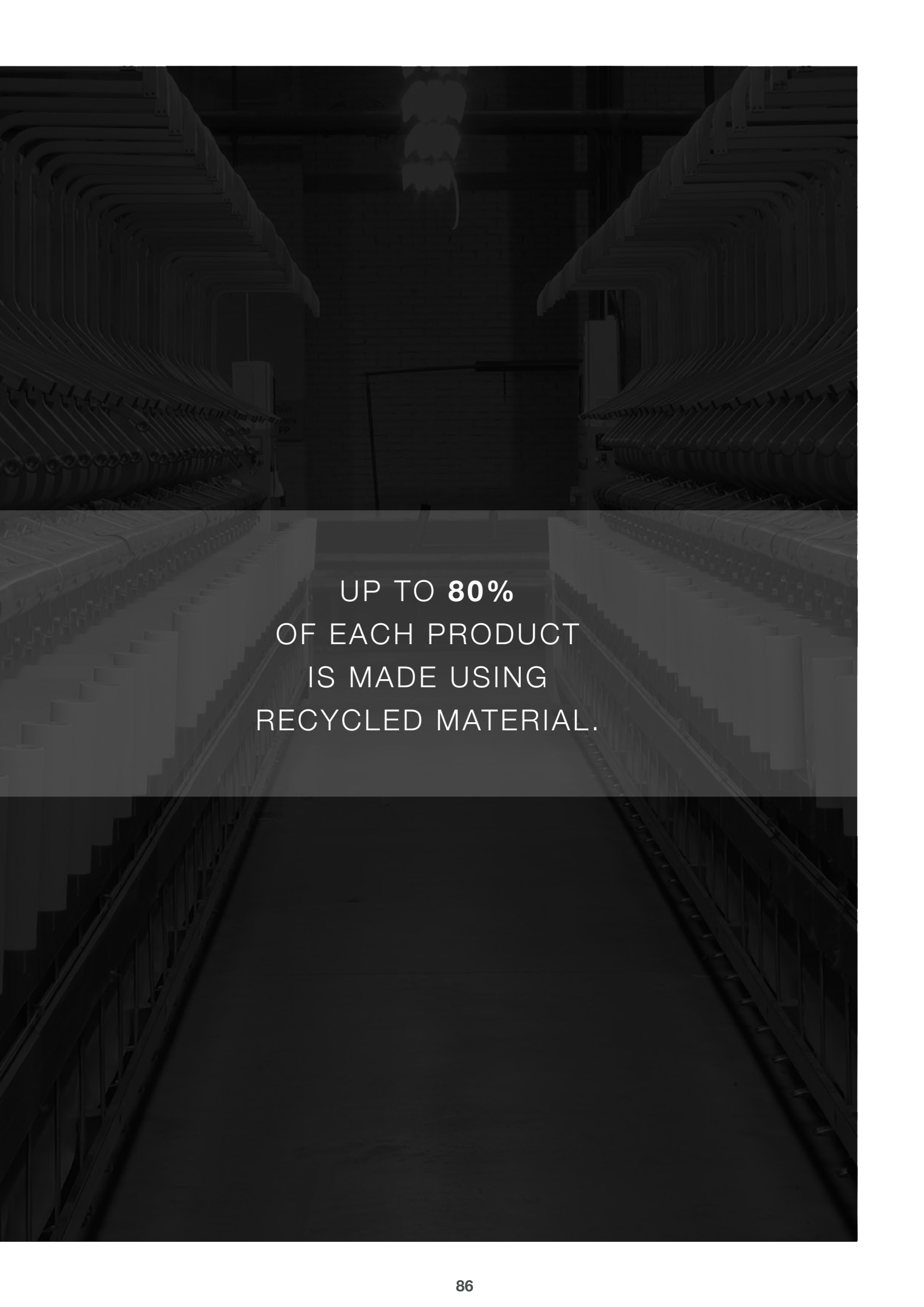
The Environmental culture at Paragon Carpet Tiles is '**reduce, reuse, recycle**'. Our materials from sustainable sources/ with recycled content wherever possible. Employees are actively involved in setting and monitoring the achievement of environmental objectives and targets.

Air emissions from the production process are independently monitored for their environmental impact. Analysis has confirmed that emissions are less than 1% of Government targets.

Manufacturing activity and its impact on the environment are regularly audited by environmental health officers and have been confirmed as 'low risk', with a rating of 5 out of 175.

British Standards regularly audit the Environmental and Quality Management Systems to ensure continued compliance to accredited standards and to demonstrate continuous improvement.





UP TO **80%**
OF EACH PRODUCT
IS MADE USING
RECYCLED MATERIAL.



PARAGON
CARPET TILES
OPERATES A
ZERO WASTE TO
LANDFILL POLICY





ISO 14001
Environmental
Management System



breglobal
Environmentally
Profiled products



ISO 9001
Quality Management
System



Sustainable Manufacturing

Raw materials are used wherever possible from sustainable sources and with recycled/ reclaimed content. Currently, standard manufacture includes:

- Bitumen backing contained at least 75% of raw material
- Latex pre-coat backing contains at least 75% of raw material
- Up to 80% of the total product is made using recycled materials
- Carpet yarns contain up to 100% recycled content
- Pallets obtained from sustainable sources (FSC certified)
- Tile boxes are 100% recycled cardboard
- Production processes are not water dependent
- Committed to sustainable UK manufacturing
- Members of considerate constructors scheme
- BREAM compliant
- Environmental Product Declarations (EPDs) available



CLEANING & MAINTENANCE GUIDE

To maximise the carpet's aesthetic appeal, performance and life expectancy, it is imperative to ensure at the specification stage that:

1. Carpets will be protected from other site activities during installation and thereafter.
2. Clients understand the enclosed information and that they accept responsibility for correct carpet care.
3. Carpets are protected from excess soiling or moisture in entrance areas, by use of an effective barrier material such as those from the MatWorks range

GENERAL CLEANING

Daily vacuuming with a twin motored upright vacuum cleaner, preferably with an adjustable head, is recommended. It is essential to remove all loose soil daily because if left to build up, the particles of dirt are much harder to remove and are more damaging to the fibre structure, thereby decreasing the life of the carpet.

Attention should be given to areas where there is extra traffic and in entrances to buildings where extra vacuuming is necessary.

Depending on the level of installation trafficking, the carpet should be periodically deep cleaned using high performance hot water extraction equipment.

Rotary brush cleaning not recommended.

A reputable contract cleaner should be used, preferably NCCA registered (for NCCA details visit www.ncca.co.uk). It is important that the carpet is deep cleaned at least once a year.

STAIN REMOVAL

It is essential to deal with spillages immediately and any subsequent stains as appropriate.

In the event of a spillage, immediately blot with a clean absorbent cloth until there is no further transfer from the carpet to the cloth. If any further stain remains or has otherwise been allowed to dry, the method will vary accordingly.

It is recognised that particularly for contract situations, if stains are not dealt with immediately, cleaning staff may not be in a position to identify the type of stain. A good quality, multipurpose stain remover is therefore very useful, although it must be understood that this will not successfully tackle all types of stains, and wherever possible the chart recommendations should be strictly followed.

Also any stains left over a period of time become increasingly more difficult to remove and may require several treatments.

In all cases, after stain removal, the carpet should be allowed to dry completely and then cleaned with a twin motored upright vacuum cleaner.

Solvent cleaning of bitumen backed tiles should preferably be avoided. Where this is not possible, extra caution should be taken and only very light surface cleaning should take place.

If any of the treatments listed are not successful, seek professional help.

The methods are recommended in good faith; however, we cannot accept responsibility for their use in any specific case.

CLEANING GUIDE

Stain Type	Stain Removal Procedure
Tea / Coffee Food Fountain Pen Ink Water Based Paint	A liquid detergent solution such as Granwax Ezee Spot & Stain Remover. Apply the solution to the stained area. Lightly agitate affected areas & remove by use of absorbent cloth. Stubborn stains may require a second application.
Chewing Gum	Apply chewing gum remover then break-up and remove pieces or pierce gum with fork or Prochem Perforator Block then apply Citrus Gel or Solvall Spotter and leave for a few minutes. Remove softened gum with spatula or blunt knife. For large areas apply Bazooka Gum Remover in conjunction with Bazooka Gum Removal Machine.
Grease	Scrape up excess, hardened residue prior to wetting. Apply Solvex or Solvall Spotter and blot. Apply Citrus Gel and blot. Apply Stain Pro and blot. For larger areas apply Power Burst then rinse extract thoroughly.
Ink (solvent soluble)	Apply Solvex and blot – do not rub. Repeat as needed. If stain persists, apply Citrus Gel. Rinse thoroughly with water and blot until dry. Note: All inks are not the same and different approaches may have to be evaluated.
Milk	Apply Stain Pro and blot. Apply Fibre & Fabric Rinse solution and blot until dry. If stain persists apply Solvex or Citrus Gel and blot. Apply Neutral Pro-Spotter and blot. Rinse thoroughly with water and blot until dry.
Oils	Apply Solvall Spotter and blot or apply Citrus Gel and blot or apply Solvex and blot until dry. Where a solvent cannot be used apply Power Burst solution, brush and rinse with Fibre & Fabric Rinse solution.
Oil Based Paint / Varnish	Apply Solvall Spotter and blot or apply Citrus Gel and blot or apply Solvex and blot. Re-apply Solvex until as much paint as possible is removed then weight down the stain with towels for several hours to loosen. Apply Neutral Pro-Spotter, work into stain then blot. Rinse thoroughly with water and blot until dry.
Shoe Polish	Apply Solvex or Sovall Spotter & blot. Apply Citrus Gel & blot. Rinse thoroughly with water & blot until dry
Tar & Asphalt	Scrape off as much as possible with blunt knife. Apply Solvall Spotter or Solvex and blot. Apply Citrus Gel and blot. Apply Neutral Pro-Spotter and blot then rinse thoroughly with water and blot until dry.

Health and Safety

Please ensure that for all above referenced items, the manufacturers' use & safety instructions are adhered to.

Granwax Ezee Spot & Stain Remover can be obtained from Granwax Products Ltd; Telephone 01773 541177
Other products listed can be obtained from Prochem Europe Ltd; Telephone 020 8974 1515

EXPERIENCE CARPET TILES



Farfield Park, Manvers, Wath-upon-Deerne, Rotherham, S63 5DB
T. +44 (0) 1709 763 839 E. sales@paragon-carpets.co.uk

www.paragon-carpets.co.uk

Samples Department: E. samples@paragon-carpets.co.uk T. +44 (0)1709 763 805

Showroom Address: Verco, Clerkenwell House, 67 Clerkenwell Road, Ground Floor East, London, EC1R 5BL