



**Taralay Initial**

**Gerflor®**

# Taralay Initial

## Eco responsible Solution Umweltbewusste Lösungen



**100 % recyclable**  
100 % recycelbar



### Health & Wellness

Anti-viral and anti-bacterial activity  
Comfort : reduction by 19 dB (Comfort)  
Indoor air quality: TVOC emissions  
10 times better than norms requirements

### Gesundheit und Wohlbefinden

Antivirale und antibakterielle Aktivität  
Beste Raumluftqualität: TVOC-Emissionen  
10-mal niedriger als die Normvorgaben  
Hervorragende Trittschalldämmung  
(19 dB Komfort)



**Made in France**

### we care / we act

Our Commitments for a Sustainable future

## Design & Performance



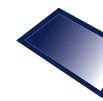
### Ultra realistic wood designs

Ultrarealistische Holzdessins



### Beautiful floors thanks to metallic inks

Besondere Tiefenwirkung  
durch Metallic-Effekte



### Mat Effect

für ein natürliches und hochwertiges  
Erscheinungsbild  
Matteffekt



### Performance indentation/ acoustic

Comfort 0.10 mm/19 dB  
Compact 0.03 mm/6 dB

Besonders gutes Verhältnis  
von Resteindruck zu  
Trittschalldämmung

Komfort 0.10 mm / 19 dB  
Kompakt 0.03 mm / 6 dB



### Easy and economical maintenance solution

no wax required

Einpflegefrei und besonders  
leicht zu reinigen

reduziert erheblich den Einsatz von Wasser  
und Reinigungsmitteln

# More than floors... global finishes solutions

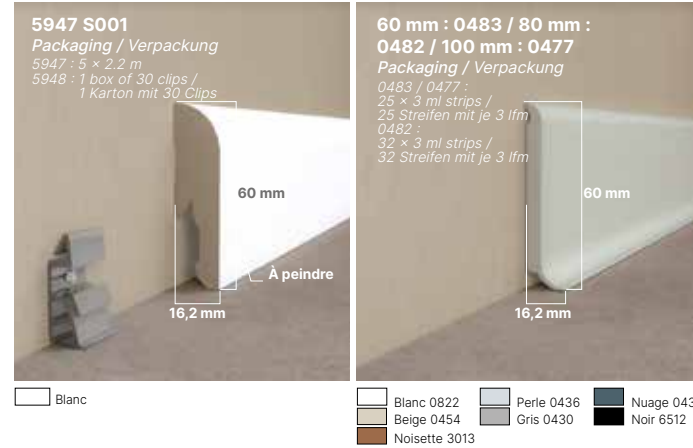
Mehr als nur ein bodenbelag:

More information on [gerflor.com](http://gerflor.com)

Für weitere Informationen besuchen Sie: [gerflor.de](http://gerflor.de)



## Design skirting (mdf) / Semi-rigid skirting Vynaflex MDR dekor-sockelleiste/ Vinyl dekor-sockelleiste



## Welding rods Schweißschnüre

Welding rods table on [gerflor.com](http://gerflor.com)  
Schweißschnürübersicht unter: [gerflor.de](http://gerflor.de)



## PVC cove former Holkehl-profile



## Entrance mats Sauberauf



			TARALAY INITIAL COMFORT	TARALAY INITIAL COMPACT
Bostonian	0959	Brown	●	●
	0960	Grey	●	●
	0961	Honey	●	●
Diversion	0049	Carbone	●	●
	0047	Ivoire	●	●
	0515	Kiwi	●	●
	0962	Marine	●	●
	0949	Soleil	●	●
	0824	Souris	●	●
Esterel	0825	Turquoise	●	●
	0636	Blond	●	●
Filament	0826	Grey	●	●
	0799	Light	●	●
Habana	0828	Beige	●	●
	0797	Ivory	●	●
Miami	0966	Abricot	●	●
	0968	Ciel	●	●
	0965	Foret	●	●
	0951	Litchee	●	●
	0967	Mer	●	●
	0969	Paon	●	●
	0963	Perle	●	●
	0950	Sable	●	●
	0952	Soleil	●	●
Noma	0964	Souris	●	●
	0970	Taupe	●	●
	0588	Clair	●	●
	0698	Naturel	●	●
Ranch	0773	Ranch	●	●
	0953	Anthracite	●	●
Renzo	0590	Steel	●	●
	0973	Alu	●	●
Spider	0957	Cuivre	●	●
	0954	Dore	●	●
	0975	Emeraude	●	●
	0956	Grenat	●	●
	0955	Perle	●	●
	0976	Quartz	●	●
Strada	0974	Saphir	●	●
	0790	Chrome	●	●
	0465	Ciment	●	●
Twist	0791	Metallic	●	●
	0978	Blond	●	●
	0980	Brown	●	●
	0977	Grey	●	●
Urban	0979	White	●	●
	0958	Beige	●	●
	0035	Gris	●	●
	0037	Souris	●	●

# Taralay Initial



0979 - Twist White



0797 - Habana Ivory



0773 - Ranch



0588 - Noma Clair



0828 - Habana Beige



Pas de lame  
Pas de raccord/  
No plank  
Continuous  
design

0799 - Filament Light



0961 - Bostonian Honey



0978 - Twist Blond



0960 - Bostonian Grey



0977 - Twist Grey



0698 - Noma Naturel



0636 - Esterel Blond



Pas de lame  
Pas de raccord/  
No plank  
Continuous  
design

0590 - Renzo Steel



0953 - Ranch Anthracite

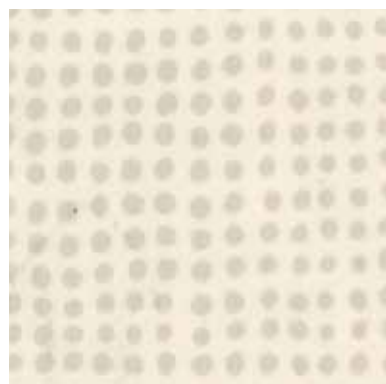


0980 - Twist Brown



0959 - Bostonian Brown

# Taralay Initial



0047 - Diversion Ivoire



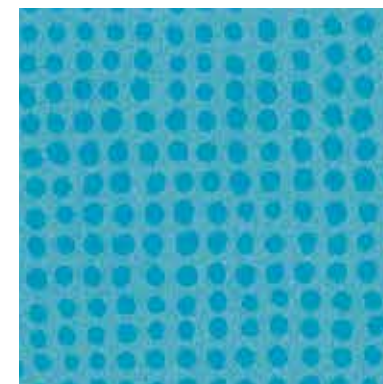
0958 - Urban Beige



0954 - Spider Dore



0968 - Miami Ciel



0825 - Diversion Turquoise



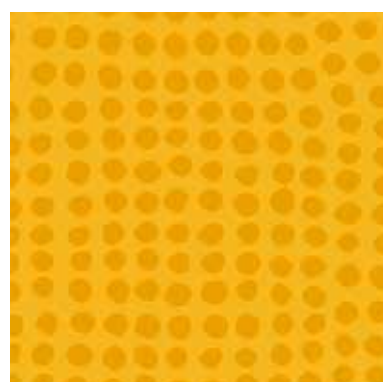
0974 - Spider Saphir



0950 - Miami Sable



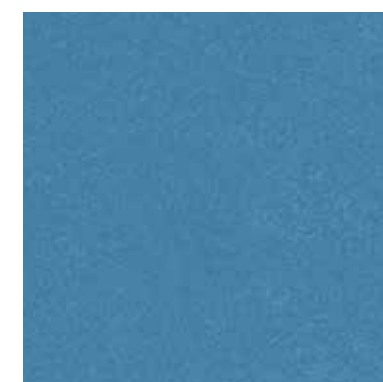
0952 - Miami Soleil



0949 - Diversion Soleil



0962 - Diversion Marine



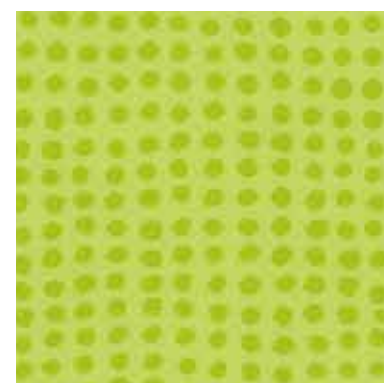
0967 - Miami Mer



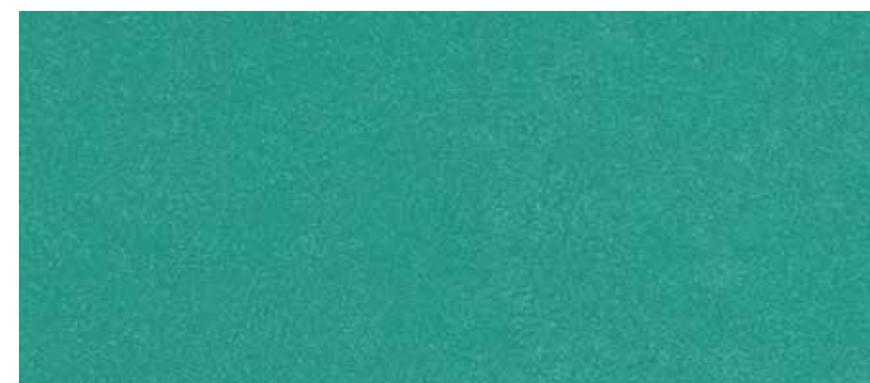
0966 - Miami Abricot



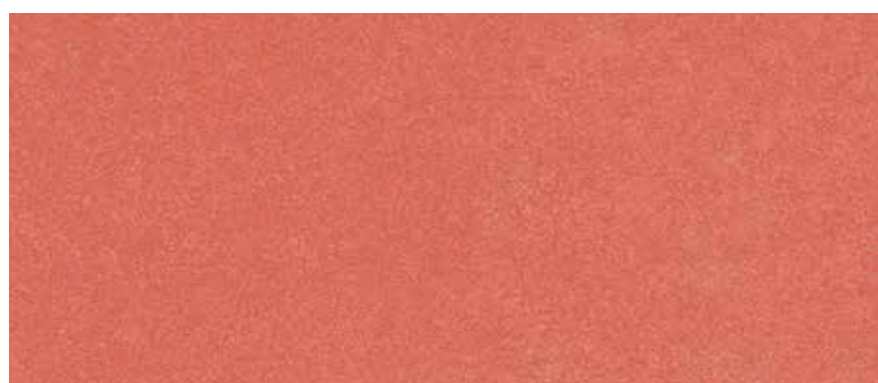
0976 - Spider Quartz



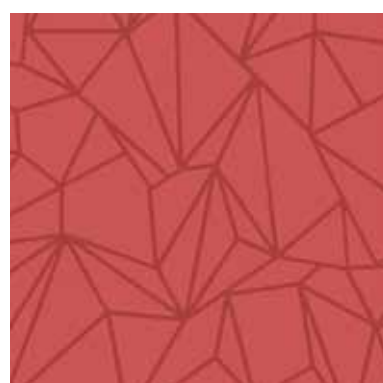
0515 - Diversion Kiwi



0965 - Miami Foret



0951 - Miami Litchee



0956 - Spider Grenat

R10



0975 - Spider Emeraude



0969 - Miami Paon

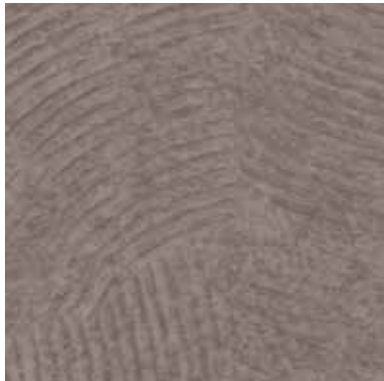
# Taralay Initial



0037 - Urban Souris



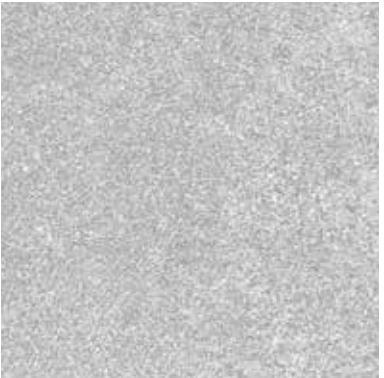
0790 - Strada Chrome



0035 - Urban Gris



0955 - Spider Perle



0963 - Miami Perle

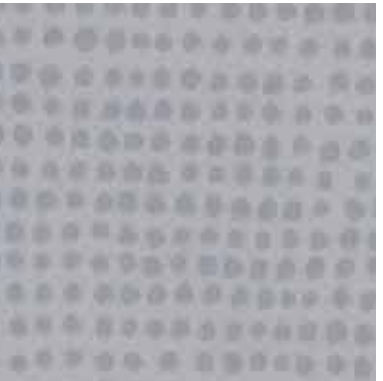


0826 - Filament Grey

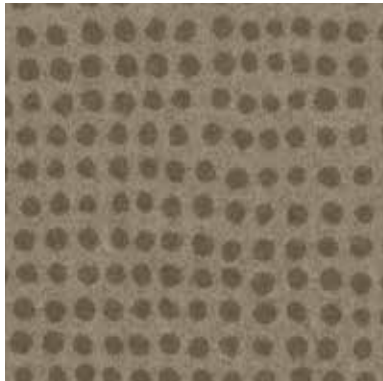


0465 - Strada Ciment

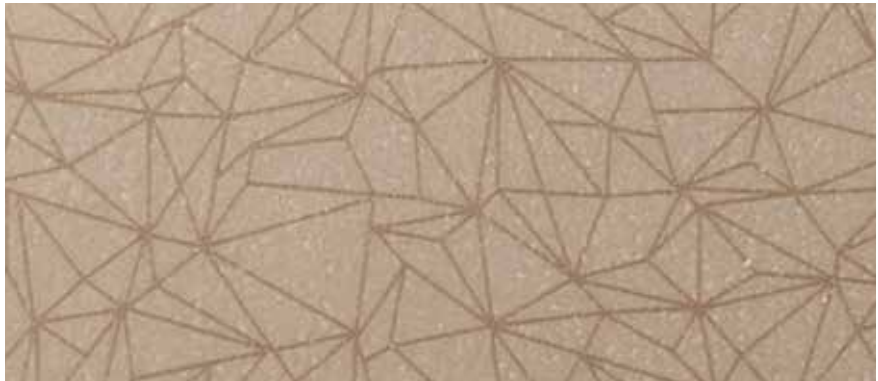
Compact  
Version 



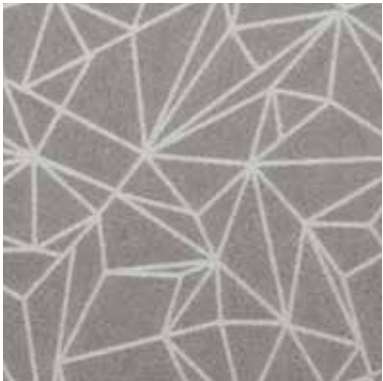
0824 - Diversion Souris



0049 - Diversion Carbone



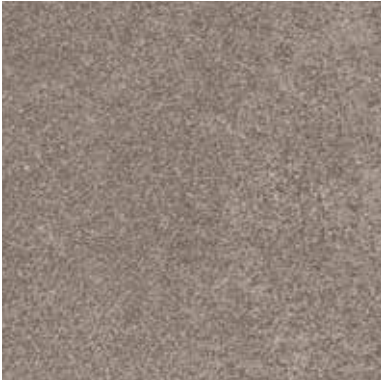
0957 - Spider Cuivre



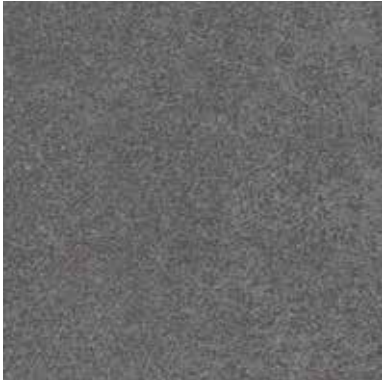
0973 - Spider Alu



0791 - Strada Metallic



0970 - Miami Taupe



0964 - Miami Souris



Z0013839

	Taralay Initial Compact		Taralay Initial Comfort	
<b>Description / Beschreibung</b>				
Total Thickness / Gesamtdicke	EN ISO 24346	mm	2.00	3.35
Thickness of the wearlayer / Dicke der Nutzschrift	EN ISO 24340	mm	0.70	0.65
Weight / Flächengewicht	EN ISO 23997	g/m <sup>2</sup>	2635	2825
Width of sheet / Rollenbreite	EN ISO 24341	cm	200	200
Length of sheet / Rollenlänge	EN ISO 24341	ml	25	25
<b>Classification / Klassifikation</b>				
Norm/Product Specification / Produktnorm	-	-	EN ISO 10582	EN ISO 11638
European Classification / Europäische Klassifizierung	EN ISO 10874	Class	34-43	34-42
Impact sound insulation / Trittschallverbesserungsmaß	EN ISO 717-2	dB	6	19
Room Impact / Raumschall	NFS 31 074	dB	-	< 65
Fire Rating / Brandverhalten	EN 13501-1	Class	Bfl-s1	Bfl-s1
Static Electrical Propensity / Begehaufladung	EN 1815	kV	< 2	< 2
Slip Resistance Wet / Rutschhemmung	DIN 51 130	Class	R10	R10
<b>Performances / Technische Eigenschaften</b>				
Wear Resistance / Verschleißverhalten	EN 660.2	mm <sup>3</sup>	≤ 2.0	≤ 2.0
Wear Group / Verschleißgruppe	QB 30	group	T	T
Type Binder content / Bindemittelgehalt	EN ISO 10582	type	I	-
Dimensional stability (norm) / Maßstabilität (norm)	EN ISO 23999	%	≤ 0.40	≤ 0.40
Residual Indentation / Resteindruck	EN ISO 24343-1	mm	≤ 0.10	≤ 0.20
Residual Indentation (average measured value) / Resteindruck	-	mm	~ 0.03	~ 0.10
Castor chair test / Stuhlrollenbeanspruchung (type H)	ISO 4918	-	OK	OK
Thermal Conductivity / Wärmeleitfähigkeit	EN ISO 10456	W/(m.k)	0.25	0.25
Colour Fastness / Lichtechtheit	EN 20 105 - B02	degree	≥ 6	≥ 6
Surface Treatment / Oberflächenvergütung	-	-	PROTECSOL®	PROTECSOL®
Chemical Products Resistance / Verhalten gegenüber Chemikalien <sup>(1)</sup>	EN ISO 26987	-	OK	OK
Anti-bacterial activity / Antibakterielle Aktivität (E. coli - S. aureus - MRSA) <sup>(2)</sup>	ISO 22196	-	> 99 % inhibits growth	> 99 % inhibits growth
Anti-viral activity (Human coronavirus) after 2 h / Antivirale Aktivität (Humanes Coronavirus) nach 2 Std <sup>(2)</sup>	ISO 21702	-	> 99,3 % (virucidal activity)	> 99,3 % (virucidal activity)
<b>Environment/Indoor Air Quality / Umwelt/Raumluftqualität</b>				
TVOC after 28 days / TVOC (28 Tage)	ISO 16000-6	micrograms/m <sup>3</sup>	<10	<10
Certification / Zeugnis	-	-	Floorscore®	Floorscore®


## CE Marking / CE Kennzeichnung




EN 14041



<sup>(1)</sup> Regarding the resistance to chemicals, please download the corresponding leaflet from our website.  
<sup>(2)</sup> The implementation of an effective cleaning method is the best defence against infection.

 The information contained in this document is valid from 01/02/2023 and is subject to change at any time without notice. In the context of constantly changing technology, our customers are responsible, prior to any use, for checking with us that this document is the version in force. Rubber leaves indelible stains on vinyl floorings: do not use mats with rubber backing and replace tubular furniture feet with those made of PVC or polyamide. Place mats of sufficient length at entrances to reduce outside sources of dirt.

 **WICHTIG:** Alle Angaben in dieser Karte entsprechen dem Kenntnisstand zum Zeitpunkt der Drucklegung. Im Einzelfall kann für deren Vollständigkeit, Richtigkeit und Anwendbarkeit keine Gewähr übernommen werden. Die aktuellste Version der technischen Daten, weitere Informationen und Downloads finden Sie unter: [www.gerflor.de](http://www.gerflor.de). Bestimmte Gummiarten (z.B. Stuhl- und Möbelfüße, Matten mit Gummirücken) hinterlassen bei längerer Einwirkung Verfärbungen auf elastischen Bodenbelägen, die nicht mehr zu entfernen sind. Dies kann vermieden werden, wenn ausschließlich Füße oder Matten aus nicht verfärbenden Gummiquitäten, PVC oder Polyethylen verwendet werden. Verwenden Sie Eingangsmatten ausreichender Größe, um den Schmutzeintrag zu reduzieren.

## We care / we act Our Commitments for a Sustainable future

  
**CARBON FOOTPRINT\***  
 -20 % kg CO<sub>2</sub> equivalent/m<sup>2</sup> between 2020 and 2025

  
**BIOSOURCED CONTENT\*\***  
 10 % by 2025

  
**RECYCLED CONTENT**  
 30 % by 2025

  
**ADHESIVE FREE\*\*\***  
 35 % by 2025

  
**ANNUAL VOLUME RECYCLED**  
 60 000 t by 2025



\* Scopes 1 and 2 defined in the GHG protocol \*\* % of activity with biosourced materials \*\*\* % of activity - adhesive free solution